

The New Systematics of Scleractinia: Integrating Molecular and Morphological Evidence

Marcelo V. Kitahara, Hironobu Fukami,
Francesca Benzoni, and Danwei Huang

Abstract

The taxonomy of scleractinian corals has traditionally been established based on morphology at the “macro” scale since the time of Carl Linnaeus. Taxa described using macromorphology are useful for classifying the myriad of growth forms, yet new molecular and small-scale morphological data have challenged the natural historicity of many familiar groups, motivating multiple revisions at every taxonomic level. In this synthesis of scleractinian phylogenetics and systematics, we present the most current state of affairs in the field covering both zooxanthellate and azooxanthellate taxa, focusing on the progress of our phylogenetic understanding of this ecologically-significant clade, which today is supported by rich sets of molecular and morphological data. It is worth noting that when DNA sequence data was first used to investigate coral evolution in the 1990s, there was no concerted effort to use phylogenetic information to delineate problematic taxa. In the last decade, however, the incompatibility of coral taxonomy with their evolutionary history has become much clearer, as molecular analyses for corals have been improved upon technically and expanded to all major scleractinian clades, shallow and deep. We describe these methodological developments and summarise new taxonomic revisions based on robust inferences of the coral tree of life. Despite these efforts, there are still unresolved sections of the scleractinian phylogeny, resulting in uncertain taxonomy for several taxa. We highlight these and propose a way forward for the taxonomy of corals.

Keywords

Azooxanthellate • Cnidaria • Coral • Integrative taxonomy • Phylogenetics • Reef • Species boundaries • Zooxanthellae

M.V. Kitahara

Departamento de Ciências do Mar, Universidade Federal de São Paulo, Campus Baixada Santista, Av. Alm. Saldanha da Gama, 89, Ponta da Praia, 11030-400 Santos, SP, Brazil

Centro de Biologia Marinha, Universidade de São Paulo, Rod. Manoel Hyppólito do Rego km 131,5, Praia do Cabelo Gordo, São Sebastião/SP 11600-000, Brazil
e-mail: mvkitahara@unifesp.br

H. Fukami

Department of Marine Biology and Environmental Science, Faculty of Agriculture, University of Miyazaki, 1-1 Gakuen-kibanadai Nishi, Miyazaki 889-2192, Japan
e-mail: hirofukami@cc.miyazaki-u.ac.jp

F. Benzoni

Department of Biotechnology and Biosciences, University of Milano-Bicocca, Piazza della Scienza 2, 20126 Milan, Italy
e-mail: francesca.benzoni@unimib.it

D. Huang (✉)

Department of Biological Sciences and Tropical Marine Science Institute, National University of Singapore, 14 Science Drive 4, Singapore 117543, Singapore
e-mail: huangdanwei@nus.edu.sg

4.1 Introduction

Stony corals belonging to the order Scleractinia (Anthozoa: Hexacorallia) are a clade of cnidarians that build a calcium carbonate skeleton in the form of aragonite, and are sister group to the non-stony corallimorpharians (Daly et al. 2003; Fukami et al. 2008; Kitahara et al. 2014; Lin et al. 2014). At present, Scleractinia contains 31 families, about 240 genera, and over 1,500 species (Cairns 1999, 2009; Appeltans et al. 2012; Huang and Roy 2015), including both zooxanthellate—hosting the symbiotic dinoflagellate *Symbiodinium*—and azooxanthellate corals. Zooxanthellate species typically inhabit shallow waters surrounding warm-subtropical and tropical seas and comprise the main coral reef framework builders with about 800 valid species. Azooxanthellate species are widely distributed in the world's oceans from shallow to deep waters and consist of about 700 valid species. Neither zooxanthellate and azooxanthellate nor shallow and deep species are distinguished phylogenetically and only partially separated at the family level taxonomically. Due to the ecological and economic importance of tropical coral reefs—e.g., high species diversity and mass fisheries production—zooxanthellate taxa have been the subject of a greater volume of research relative to azooxanthellate species. However, both groups have comparable richness, having diversified successfully over hundreds of millions of years. Therefore in this chapter on coral systematics, they deserve equal attention, limited only by the amount of published data available.

The coral skeleton has been and continues to be the main source of morphological characters used in scleractinian classification. Most coral species are colonial, but solitary corals have evolved in at least six lineages independently (Barbeitos et al. 2010). Among colonial species, each corallite (skeletal unit formed by an individual polyp) within a colony or species may have varying characteristics depending on growth rate, position in the colony and other environmentally-influenced traits. Consequently, morphological boundaries between species are generally obscure, and the task of identifying corals falling within and outside the limited pool of systematists has remained challenging at every taxonomic level since Linnaeus (1758) established *Madrepora*.

Fortunately, molecular phylogenetic analyses in the last two decades have undoubtedly advanced coral taxonomy by making large amounts of data available and inspiring the next generation of systematists. Understandably, the numerous name changes across the entire coral phylogeny that have ensued can cause considerable confusion for coral researchers outside the limited circle of systematists. To address this apparent disarray, we track the history of molecular data used for phylogenetic reconstruction, summarise the most recent phylogenetic understanding of corals, and

describe recent taxonomic research at family, genus and species levels. Finally we conclude by highlighting taxonomic issues that remain unresolved in the hope that research efforts will be refocused to stabilise all of the problematic taxa.

4.2 The Rise of Molecular Phylogenetic Methods

Genetic data have been collected from scleractinian corals since the early 1980s, but these were first based on allozyme allelic frequencies obtained using gel electrophoresis (Ridgway 2005). Stoddart (1983, 1984) examined the genetic diversity of *Pocillopora damicornis* using up to ten enzymes, and found that populations from Western Australia and Hawaii were maintained predominantly via asexual reproduction. Willis and Ayre (1985) analysed eight enzyme loci from Great Barrier Reef *Pavona cactus* to show that genetically similar colonies tended to show the same growth form, and overall the species comprised highly clonal populations (Ayre and Willis 1988). Allozyme electrophoresis was also employed to clarify genetic boundaries of closely-related morphotypes, such as between *Montipora* species (Heyward and Stoddart 1985), *M. digitata* populations (Stobart and Benzie 1994), within the *Orbicella* (previously “*Montastraea*”) *annularis* species complex (Knowlton et al. 1992; van Veghel and Bak 1993), and among *Platygyra* morphospecies (Miller and Benzie 1997).

Another early genotyping method was restriction fragment length polymorphism (RFLP), which hybridised digested DNA fragments to probes for determining their lengths, or to genomic DNA of known species to establish identity. McMillan and Miller (1988) used RFLP to distinguish the morphologically confusing corals, *Acropora formosa* (= *A. muricata*) and *A. “nobilis”* (= *A. intermedia*; see Veron and Wallace 1984).

The first set of scleractinian DNA sequence data to be published comprised highly repetitive sequences of 118 bp each, otherwise known as minisatellites, cloned from *Acropora muricata* and *A. latistella* (McMillan and Miller 1989). Five more species were sequenced for these repeats in a follow-up study, in which a maximum parsimony analysis did not support most of the morphological subgroups (McMillan et al. 1991).

The use of polymerase chain reaction (PCR), an essential technique of today, began for corals with the amplification of nuclear 28S ribosomal DNA (rDNA) that was then sequenced for reconstructing the phylogeny of Anthozoa (Chen et al. 1995). This analysis included nine species of scleractinian corals, and two families tested with more than one species each were recovered as clades. In a subsequent analysis that focused on Scleractinia, Veron et al. (1996) added six species

with improved representation from Fungiidae and Poritidae, which were found to be monophyletic.

At about the same time, the mitochondrial 16S rDNA was sequenced from 34 species to reconstruct a larger scleractinian phylogeny (Romano and Palumbi 1996, 1997). This analysis showed that all five genera and nine of ten families for which more than one taxon were tested formed monophyletic groups. However, of the seven suborders examined, only three—Meandriina, Poritiina and Dendrophylliina—were recovered unambiguously as clades, although only Dendrophylliina remains the only monophyletic suborder to emerge from recent studies (e.g., Fukami et al. 2008; Arrigoni et al. 2014a).

Other PCR-based methods were adopted earlier on but these contributed little to phylogenetic reconstruction and have largely been discontinued owing to the fall in DNA sequencing costs in recent years. For instance, random amplified polymorphic DNA (RAPD) detected by four 10-mer primers showed that *Favia fragum* and *Porites astreoides* underwent high levels of self-fertilisation (Brazeau et al. 1998). Five RAPD primers were also used to assess differentiation among populations of *Acropora surculosa* (= *A. hyacinthus*) in Guam (Romano and Richmond 2000). The four populations studied were not significantly distinct from one another, but the eastern and western coasts of Guam were found to be genetically distinct when the respective populations were pooled. Amplified fragment length polymorphism (AFLP) is another PCR-based tool related to the RFLP technique that amplifies the restriction fragments which are subsequently separated by gel electrophoresis. This method aided in the discrimination of *Orbicella faveolata* from the other two species of the *O. annularis* complex (Lopez and Knowlton 1997; Lopez et al. 1999). Interestingly, AFLP was able to detect a much greater proportion of distinct *Pavona cactus* genotypes at Eclipse Island compared to allozyme genotypes (Smith et al. 1997), which indicated highly clonal populations instead (Ayre and Willis 1988).

Microsatellites, short tandem sequence repeats of between two and five bp, are typically used in population genetic studies and in tests of species boundaries among closely-related species. The first coral microsatellite to be utilised was detected in *Orbicella franksi* and used to distinguish among members of the *O. annularis* complex (Lopez et al. 1999). Many taxon-specific sets of microsatellite markers were published at the turn of the century (Maier et al. 2001; Le Goff and Rogers 2002; Magalon et al. 2004; Miller and Howard 2004; Severance et al. 2004a; Shearer and Coffroth 2004), and continue to be developed in recent years (Davies et al. 2013; Torda et al. 2013c; Boulay et al. 2014; Serrano et al. 2014; Zilberberg et al. 2014; Addamo et al. 2015; Tay et al. 2015). Unfortunately, the extreme polymorphism exhibited by these markers even among sibling species diminishes

their utility for inferring phylogenies, but they continue to be the main workhorse for population genetic studies.

The first multi-species evolutionary trees of Scleractinia were reconstructed on the basis of the mitochondrial 16S rDNA (Romano and Palumbi 1996) and nuclear 28S rDNA (Veron et al. 1996). Shortly after, the nuclear internal transcribed spacers 1 and 2 (ITS), which include the 5.8S rDNA between them (White et al. 1990), were amplified and sequenced from the *Orbicella annularis* complex (Lopez and Knowlton 1997), as well as species from *Acropora* (Odorico and Miller 1997) and *Porites* (Hunter et al. 1997). Lopez and Knowlton (1997) also obtained sequence data from the β -tubulin coding and intron regions, but found that ITS and these loci showed no diagnosable variability among the three *Orbicella* species. The *Acropora* species exhibited varying degrees of molecular separation, with only *A. longicyathus* clearly distinguished from the other four studied species (Odorico and Miller 1997). However, ITS from five species of *Porites* analysed under maximum parsimony appeared to resolve evolutionary relationships among them (Hunter et al. 1997).

These taxon-specific patterns of genetic resolution prompted researchers to expand on the repertoire of loci from both the nuclear and mitochondrial genomes for phylogenetic purposes (Severance et al. 2004b; Concepcion et al. 2006, 2010; Flot et al. 2008; Chen et al. 2009). These markers, along with the primers used to amplify them, are often clade specific. Among the nuclear loci that are still in use today, some of the earliest to be developed include the intron region of the mini-collagen gene (Wang et al. 1995), used almost exclusively to investigate the evolutionary history of *Acropora* (Hatta et al. 1999; Vollmer and Palumbi 2002; Fukami et al. 2003; Palumbi et al. 2012; Suzuki and Fukami 2012). The Pax-C 46/47 intron, introduced by van Oppen et al. (2000, 2001), continues to be used for *Acropora* phylogenetics (Richards et al. 2008, 2013) and taxonomically broader reconstructions (Fig. 4.1). The divergence of Pax-C intron is low among sibling species (van Oppen et al. 2000) but is much higher for more inclusive clades (van Oppen et al. 2001).

The awareness that gene duplication (Lopez and Knowlton 1997; Odorico and Miller 1997) and heterozygosity (van Oppen et al. 2000) are common in nuclear loci led many to clone their PCR products and sequence multiple clones in hopes of capturing intragenomic variability. These include amplifications of the Pax-C intron (van Oppen et al. 2001, 2004; Márquez et al. 2002; Richards et al. 2008, 2013), β -tubulin (Fukami et al. 2004b; Stefani et al. 2008a), ITS (Medina et al. 1999; van Oppen et al. 2000, 2002; Diekmann et al. 2001; Rodriguez-Lanetty and Hoegh-Guldberg 2002; Márquez et al. 2003; Chen et al. 2004; Vollmer and Palumbi 2004; Forsman et al. 2005, 2006, 2009, 2010, 2015; Wei

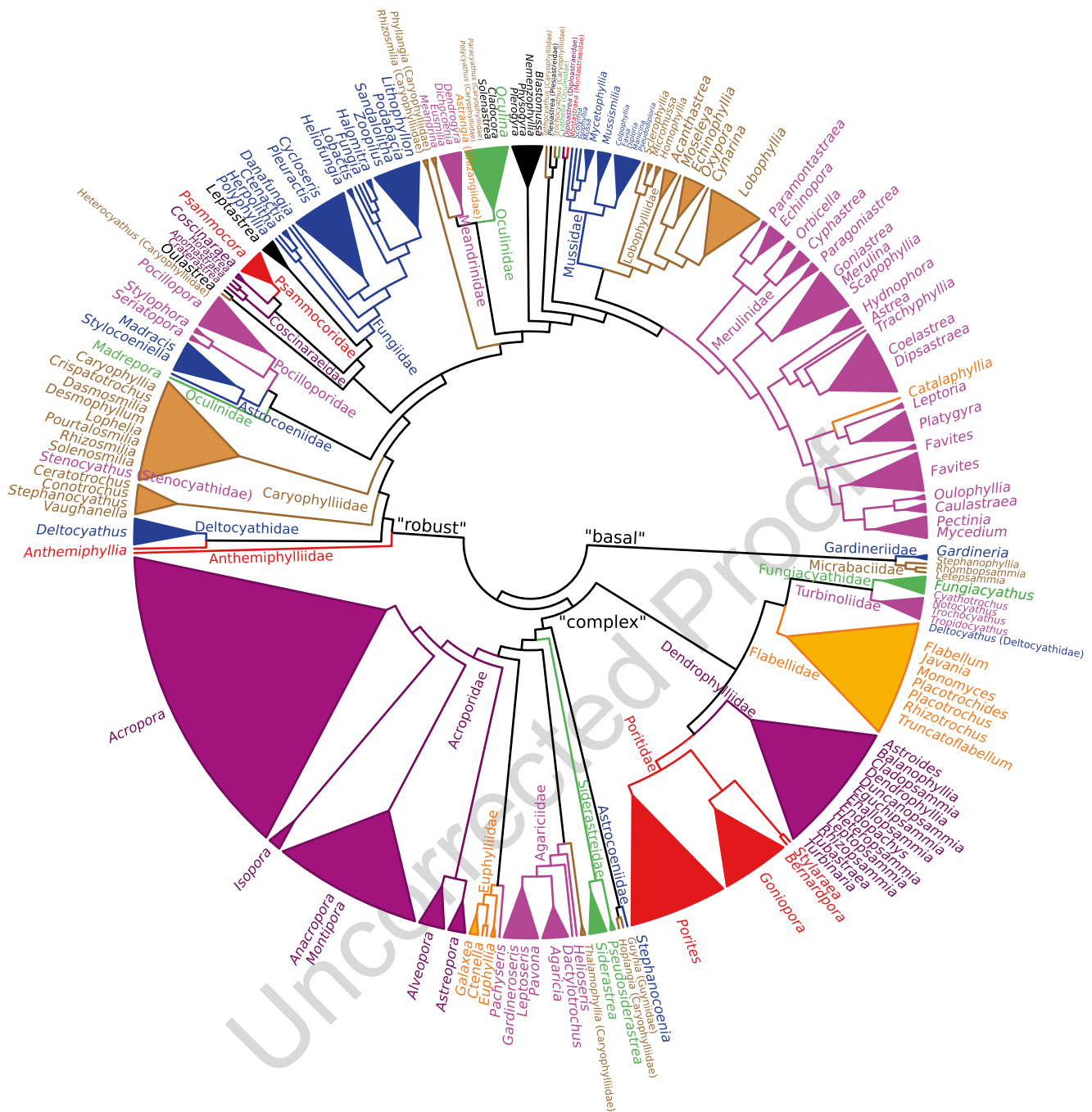


Fig. 4.1 Maximum likelihood genus-level phylogeny (576 species) of Scleractinia based on 12 DNA markers: mitochondrial 12S rDNA, 16S rDNA, ATP synthase subunit 6, cytochrome c oxidase subunit I, control region, cytochrome b and NADH dehydrogenase subunit 5; nuclear 18S rDNA, 28S rDNA, histone H3, internal transcribed spacers and Pax-C

46/47 intron. Data unavailable for Schizocyathidae, the only valid extant family not represented here. Branch supports not assessed in detail. Colours differentiate adjacent families and are not unique for any taxa, except for genera assigned *incertae sedis* that are shown in black

232 et al. 2006; Stefani et al. 2011; Kitano et al. 2013, 2014), and
 233 28S rDNA (Chen et al. 2000; Cuif et al. 2003; Wolstenholme
 234 et al. 2003). For regions that have not diverged considerably
 235 between paralogues, such as the ITS, mixed PCR products
 236 can be split into two dominant sequences based on phase
 237 reconstruction of forward and reverse chromatograms of dis-

tinct lengths (Flot and Tillier 2006; Flot et al. 2006). The
 software Champuru was developed (Flot 2007) and used for
 processing direct sequencing data from *Pocillopora* (Flot
 et al. 2008, 2010; Schmidt-Roach et al. 2013; Adjeroud et al.
 2014) and *Stylophora* (Flot et al. 2011). Variable amplicons
 with no intra-individual length variation can also be resolved

238
 239
 240
 241
 242
 243

244 statistically using SeqPHASE (Flot 2010). Furthermore,
245 direct sequencing of ITS has been carried out following PCR
246 with primers demonstrating high fidelity for a single copy
247 (Takabayashi et al. 1998a, b, 2003; Lam and Morton 2003;
248 Benzoni et al. 2007, 2010, 2011, 2012a, b, 2014; Mangubhai
249 et al. 2007; Stefani et al. 2008b; Knittweis et al. 2009; Huang
250 et al. 2011; Benzoni and Stefani 2012). Nevertheless, since
251 the intra-individual variability of these nuclear markers is not
252 fully understood (Chen et al. 2004; Vollmer and Palumbi
253 2004), caution should be exercised even when using these
254 primer sets.

255 Mitochondrial loci have also been popular markers in phy-
256 logenetic analyses. These are haploid, and thus unambiguous
257 sequences can be obtained generally without cloning. While
258 mitochondrial genes typically evolve faster than nuclear
259 genes in metazoans, anthozoans show an opposite pattern
260 (van Oppen et al. 1999; Shearer et al. 2002; Fukami and
261 Knowlton 2005; Tseng et al. 2005; Hellberg 2006; Huang
262 et al. 2008; Chen et al. 2009). Therefore, these genes are more
263 informative for reconstructing deep coral phylogenies. Other
264 than the 16S rDNA that established widespread subordinal
265 non-monophyly (Romano and Palumbi 1996, 1997; Le Goff-
266 Vitry et al. 2004), 12S rDNA, cytochrome b and cytochrome
267 c oxidase subunit I (COI) were purposed for corals relatively
268 early (Medina et al. 1999; van Oppen et al. 1999; Chen and Yu
269 2000; Fukami et al. 2000) and have been used for inferring
270 large scleractinian trees effectively (Chen et al. 2002; Fukami
271 et al. 2004b, 2008; Barbeitos et al. 2010; Kitahara et al. 2010b,
272 2013; Stolarski et al. 2011; Arrigoni et al. 2012, 2014c; Huang
273 2012; Huang and Roy 2013, 2015; Marcelino et al. 2013;
274 Curnick et al. 2015; Fig. 4.1). The gene encoding ATP syn-
275 thase subunit 6 is also commonly used, but primarily for
276 Acroporidae (Fukami et al. 2000; Forsman et al. 2010).

277 Different taxa contain various intergenic regions within
278 their mitochondrial genomes, but these may not be orthologous
279 across species or are not amenable for alignment across
280 distant clades. The noncoding intergenic region identified by
281 Fukami et al. (2004a), for instance, was too variable to be
282 aligned across all of Merulinidae (Huang et al. 2011) and is
283 not orthologous with the intergenic region (or the putative
284 control region) in *Acropora* (van Oppen et al. 2001;
285 Wolstenholme 2004; Richards et al. 2008, 2013), *Montipora*
286 (van Oppen et al. 2004; Forsman et al. 2010), *Porites*
287 (Forsman et al. 2009) or Agariciidae (Luck et al. 2013;
288 Pochon et al. 2015). These fast-evolving mitochondrial
289 markers remain useful for phylogenetic studies among
290 closely-related species.

291 Whole mitochondrial genomes have also been extremely
292 important sources of data for large coral phylogenies (Medina
293 et al. 2006; Emblem et al. 2011; Kayal et al. 2013; Lin et al.
294 2011, 2014). Nevertheless, we note that major clades appear
295 to exhibit distinct patterns of mtDNA sequence evolution
296 that could be responsible for various topological inconsisten-

297 cies, such as the paraphyly of Scleractinia with respect to
298 Corallimorpharia (Kitahara et al. 2014), i.e., the “naked
299 coral” hypothesis (Medina et al. 2006).

300 On the one hand, single-gene analyses were the rule
301 among the earliest studies because of the high cost of DNA
302 sequencing and the paucity of suitable markers, primers and
303 publicly available data. On the other hand, there were studies
304 drawing phylogenetic inference based on more than one loci,
305 including Lopez and Knowlton’s (1997) analyses of two
306 nuclear genes and AFLP. Early researchers also acknowl-
307 edged that nuclear and mitochondrial genes evolve at differ-
308 ent rates and thus both should be examined, albeit as separate
309 datasets (Medina et al. 1999; Romano and Cairns 2000; van
310 Oppen et al. 2001). Sequence data were combined beginning
311 with the seminal study by Fukami et al. (2004b), which con-
312 catenated the cytochrome b and COI genes after passing the
313 incongruence length difference test (Farris et al. 1995). The
314 use of more than one marker for inferring species relation-
315 ships has become the norm in more recent studies, aided by
316 a variety of nucleotide substitution models (Posada and
317 Crandall 2001) and the ability to use mixed models in a mul-
318 tilocus partitioned-by-gene analysis (Ronquist and
319 Huelsenbeck 2003; Stamatakis 2006).

320 Authors remain split between concatenating markers to
321 obtain hidden support (Huang et al. 2011; Addamo et al.
322 2012; Arrigoni et al. 2012, 2014a, b, c; Benzoni et al. 2012b)
323 and making separate estimations of gene trees (Benzoni et al.
324 2011, 2012a, 2014; Gittenberger et al. 2011; Bongaerts et al.
325 2013; Kitano et al. 2013, 2014; Huang et al. 2014a; Arrigoni
326 et al. 2015). With more markers available for inferring phy-
327 logenies, combined analyses of multilocus data may be the
328 way forward. Recent large-scale studies (>450 species) have
329 sought to concatenate data from seven or more loci (Huang
330 2012; Huang and Roy 2013, 2015; Curnick et al. 2015; Fig.
331 4.1). However, different genes cannot be assumed to share
332 the same evolutionary history, and the phylogeny recon-
333 structed for every gene may differ from the actual species
334 history (Maddison and Knowles 2006). Thus, for species
335 classifications, methods that use coalescent theory to jointly
336 estimate gene trees and the species tree would be more
337 appropriate (Liu and Pearl 2007; Liu 2008; Liu et al. 2008;
338 Heled and Drummond 2010). A recent study of *Porites* corals
339 based on the multilocus coalescence showed that the
340 three branching forms found in the Caribbean are probably
341 not distinct species (Prada et al. 2014).

342 These species tree methods have become especially rele-
343 vant with the development of high-throughput sequencing
344 technologies because it is now possible to generate orthologous
345 sequence data in great abundance (McCormack et al.
346 2013). Such data can be obtained through the sequencing of
347 expressed sequence tags (Philippe and Telford 2006), restric-
348 tion site associated DNA (Rubin et al. 2012), and probe-
349 based target enrichment of nuclear ultraconserved elements

(Faircloth et al. 2012; Lemmon et al. 2012), among several others. The assembly of the complete *Acropora digitifera* genome (Shinzato et al. 2011) has provided a much-needed reference to identify and utilise orthologous regions for phylogenetic analyses. Indeed, we expect these new methods to be applied on scleractinians extensively in the next decade, sustaining the “molecular revolution” (Stolarski and Roniewicz 2001: 1101) of coral systematics.

4.3 The Phylogeny of Scleractinia: Integrating Molecular and Morphological Evidence

The origin of modern Scleractinia is not well understood. Fossils appeared abruptly in the Middle Triassic (ca. 240 Ma ago) already represented by a wide variety of solitary and colonial forms (Roniewicz and Morycowa 1993; Veron 1995; Stanley Jr 2003). From colony integration, e.g., phaceloid, meandroid and thamnasteroid (Wells 1956; Stanley Jr 2003), to the structural organisation within individual corallites, e.g., septal ornamentation and axial structures (Roniewicz 1989; Roniewicz and Stanley Jr 1998; Roniewicz and Stolarski 1999, 2001), the range of morphological diversity observed among Triassic fossils is comparable to that in modern scleractinians. Moreover, the recent proposal that *Kilbuchophyllia* (Ordovician, ca. 450 Ma ago; Scrutton and Clarkson 1991; Scrutton 1993), *Numidiaphyllum* and *Houchangocyathus* (Permian, ca. 265–255 Ma ago; Ezaki 1997, 2000) were true scleractinian corals, in addition to molecular clock estimates (Stolarski et al. 2011), suggest an extensive Palaeozoic evolutionary history for Scleractinia.

The foundational studies of evolutionary relationships in the late nineteenth and early twentieth centuries relied exclusively on macromorphological skeletal characteristics of extant and extinct scleractinians. As they are sessile or have restricted capacity for movement (e.g., free-living and/or solitary), corals are subjected to the environmental conditions at their place of settlement. Consequently, they exhibit considerable morphological plasticity, driven in part by various ecological factors (Foster 1979a, b, 1980; Best et al. 1984; Hoeksema 1991; Budd 1993; Todd 2008). According to Lowenstein (1985), taxonomic research based exclusively on morphology is plagued by two major limitations. The first arises from convergence, in which unrelated taxa resemble one another as a result of having adapted to living in similar environments, so morphological similarities are not indicative of close evolutionary relationships. The second limitation concerns traits that may evolve at distinct rates in different lineages. Not surprisingly, the small number of “reliable” macromorphological characters, as indicated by Cairns (2001), and the uncertain impact of environmental variables on skeletal morphology have severely hampered

attempts to infer relationships among scleractinian suborders and families (Romano and Cairns 2000; Stolarski and Roniewicz 2001; Le Goff-Vitry et al. 2004; Fukami et al. 2008). As such, evolutionary hypotheses based on morphological characters have resulted in several different taxonomic schemes (e.g., Vaughan and Wells 1943; Alloiteau 1952; Wells 1956; Chevalier and Beauvais 1987; Veron 1995; for a review of the first four schemes, see Stolarski and Roniewicz 2001). Despite the long history of the subject (e.g., Linnaeus 1758; Pallas 1766; Forskål 1775; Esper 1795; Lamarck 1801), taxonomic and evolutionary relationships within this important habitat-forming anthozoan order remain largely uncertain to date.

In their first comprehensive and consistent scheme that was heavily influenced by the skeletal macromorphological research of Milne Edwards and Haime (e.g., 1848a, b, c, d, e, 1850, 1851a, b, 1857), Vaughan and Wells (1943) hierarchically ordered several characters and devised keys to genera centered around an evolutionary hypothesis of Scleractinia. Although more recent analyses have included additional and more detailed subcorallite morphology, the revised version of this scheme published in the *Treatise on Invertebrate Paleontology* (Wells 1956) is still widely applied (Wood 1983; Veron 1986, 2000). The essence of Wells’ (1956) scheme is that five scleractinian suborders can be distinguished based on characteristics of septal trabeculae and septal structure, with 33 families differentiated by wall type, occurrence of endotheca and type of budding.

The incorporation of subcorallite data into scleractinian classification was pioneered by Alloiteau (1952, 1957), who recognised a total of 65 families (30 with extant representatives) belonging to eight suborders. These groupings were later revised with greater emphasis on microstructural characters by Chevalier and Beauvais (1987), who proposed 11 suborders embracing 55 families. However, according to Stolarski and Roniewicz (2001: 1095), the microstructural criteria applied “to distinguish suborders containing only extinct taxa (i.e., Pachythecaliina, Distichophylliina, Archaeofungiina) are unclear or have not been supported by further research”.

The most recent Scleractinia-wide classification divided the order into 13 suborders (7 with extant representatives) and 61 families (24 extant) (Veron 1995). However, as explicitly stated by the author, it had many points of uncertainty at subordinal and family levels. According to Budd et al. (2010), this evolutionary scheme had even lower resolution among families and suborders than the classification of Wells (1956), and by that time cladistic analyses had yet to contribute significantly to our understanding of scleractinian evolution. Indeed, the use of morphological characters to establish phylogenetic relationships within coral families have proved challenging and, as a consequence, applied to only a small number of extant families—Fungiidae (Cairns

1984; Hoeksema 1989, 1991, 1993), Mussidae and Siderastreidae (Pandolfi 1992), Turbinoliidae (Cairns 1997), Faviidae (Johnson 1998), Acroporidae (Wallace 1999), Dendrophylliidae (Cairns 2001), Atlantic Faviidae and Mussidae (Budd and Smith 2005), and Pacific Faviidae (Huang et al. 2009).

The recent recognition that the scleractinian skeleton is biologically controlled and not easily perturbed by environmental factors at the microstructural level (Janiszewska et al. 2011, 2013) has led to more detailed subcorallite observations (Cuif et al. 2003; Budd et al. 2012; Kitahara et al. 2012, 2013; Arrigoni et al. 2014a; Huang et al. 2014b; Janiszewska et al. 2015). Indeed, greater attention has been given to previously overlooked micromorphological and microstructural characters. Specifically, micromorphology considers the shapes of teeth along the wall, septa, columella, and septal face granulations, while microstructure is concerned with the cross-sectional wall structure, arrangements of rapid accretion centres and thickening deposits within the wall, septa, and columella (Cuif and Perrin 1999; Budd and Stolarski 2009, 2011). Together with improvements in our understanding of skeletal ontogeny, new studies of subcorallite morphology are shedding light on evolutionary relationships within the order. Indeed, the finding that intra-fibrous organic matrices containing complex macromolecular assemblages actually control nucleation, spatial delineation and organisation of basic microstructural skeletal units (Lowenstam and Weiner 1989) has provided support for several molecular clades (e.g., Cuif et al. 2003; Benzoni et al. 2007; Budd and Stolarski 2009, 2011; Janiszewska et al. 2011, 2015; Kitahara et al. 2012, 2013).

DNA sequences provide large numbers of phylogenetically informative characters that are independent of the high morphological variability of the coral skeleton. Various degrees of incongruence between morphological and molecular phylogenies are seen at all taxonomic levels, but the most striking is found at the subordinal level. While five suborders are recognised in the most widely-accepted morphological scheme (Wells 1956), only three main clades at the deepest nodes—“basal”, “complex” and “robust”—have been recovered based on molecular analyses (Romano and Palumbi 1996; Kitahara et al. 2010b; Stolarski et al. 2011; Huang 2012). Nearly every genetic locus tested to date supports these latter groupings. The 28S rDNA (Chen et al. 1995; Cuif et al. 2003), 16S rDNA (Romano and Palumbi 1996, 1997; Le Goff-Vitry et al. 2004; Kitahara et al. 2010a), 12S rDNA (Chen et al. 2002), combined 16S rDNA and 28S rDNA (Romano and Cairns 2000), combined cytochrome b and COI, as well as β -tubulin (Fukami et al. 2008) all support the split between the “complex” and “robust” clades. The sister relationship between the “basal” clade and the rest of Scleractinia has been recovered by 12S rDNA, COI, 28S rDNA (Kitahara et al. 2010b; Stolarski et al. 2011), and most

other mitochondrial loci (Huang 2012; Huang and Roy 2013, 2015; Kitahara et al. 2014; Lin et al. 2014). To date, no morphological characters associated with the hard skeleton have been found to correlate directly with the molecular splits. Interestingly, an examination of four “complex” and seven “robust” corals revealed that the two clades differ in embryonic developmental morphology (“prawn chip” in “complex” corals), with the notable exception of the “complex” *Pavona decussata*, which is more similar to “robust” clade representatives in this respect (Okubo et al. 2013). Expectedly, without any trace of soft tissue preserved, it would be even more challenging to position the extinct suborders on the coral phylogeny.

At the family level, the picture is not very different. Most families composed exclusively of zooxanthellate species have been shown by molecular data to be polyphyletic (Fukami et al. 2004b, 2008; Arrigoni et al. 2012). Among these, the most poorly understood families were Faviidae, Merulinidae, Pectiniidae and Trachyphylliidae (sensu Veron 2000). The Indo-Pacific representatives of these taxa had been called the “Bigmessidae” for their extremely chaotic and unnatural classification (Budd 2009; Huang et al. 2011). In contrast, the molecular evolutionary hypothesis posits that most families composed exclusively or predominantly of azooxanthellate corals are monophyletic. Therefore, apart from Caryophylliidae and Oculinidae, molecular groupings of azooxanthellate taxa are broadly consistent with classical taxonomy (Kitahara et al. 2010b; Stolarski et al. 2011).

According to our present understanding, the order Scleractinia comprises at least 30 clades that correspond to family-level groups. Among them, Gardineriidae and Micrabaciidae belong to the “basal” clade; Acroporidae, Agariciidae, Astrocoeniidae, Dendrophylliidae, Euphylliidae, Flabellidae, Fungiacyathidae, Guyniidae, Poritidae, Siderastreidae and Turbinoliidae from the “complex” clade; and Anthemiphylliidae, Caryophylliidae, Coscinaraeidae, Deltocyathiidae, Diploastraeidae, Fungiidae, Lobophylliidae, Meandrinidae, Merulinidae, Montastraeidae, Mussidae, Oculinidae, Plesiastreidae, Pocilloporidae and Psammocoridae represent the “robust” clade (Fig. 4.1). Genetic sampling for three families is limited or nonexistent. Rhizangiidae is represented only by the mitochondrial genome of an *Astrangia* species (Medina et al. 2006), which is closely related to *Oculina* (Huang 2012; Huang and Roy 2013, 2015). Stenocyathidae consists of three monotypic genera, of which only *Stenocyathus* has been sequenced and found nested within Caryophylliidae (Cuif et al. 2003; Kitahara et al. 2010b; Stolarski et al. 2011). Schizocyathidae contains three monotypic genera that have never been sampled for genetic data. Among the “robust” corals, *Madrepora* and *Heterocyathus* + *Oulastrea* appear to be two phylogenetically distinct lineages that cannot be placed in any of the above families.

4.4 New Taxonomic Revisions of Families and Genera

The abundance of taxonomic revisionary studies is increasing in recent years, but the resolution of all scleractinian families and genera is far from complete. A large amount of data and comprehensive taxonomic coverage are necessary to justify formal name changes following the International Code of Zoological Nomenclature, which have taken considerable time and effort by numerous coral taxonomists. Consequently, the first revision to jointly consider DNA sequence data and traditional forms of evidence such as morphology and reproduction in a phylogenetic context only emerged more than a decade after the first scleractinian molecular phylogenies by Romano and Palumbi (1996) and Veron et al. (1996).

The pioneering study by Wallace et al. (2007) used one mitochondrial (cytochrome b) and one nuclear (histone 2a and 2b) gene to show that subgenus *Isopora*, previously placed within *Acropora*, was sufficiently distinct to be elevated to genus within family Acroporidae. *Isopora* tends to form more than one axial corallite per branch, while *Acropora* contains only a single axial corallite (Wallace et al. 2012). Reproductively, *Isopora* broods planula larvae and its oocytes are attached via a stalk to the mesenteries, in contrast to *Acropora* spp. which are broadcast spawners and have unstalked gonads.

Acroporidae expanded further when, following the comprehensive reconstruction of Fukami et al. (2008), Dai and Horng (2009a) transferred *Alveopora* from Poritidae to Acroporidae (see also Licuanan 2009). Like its new confamilials, *Alveopora* possesses synapical walls (Wallace 2012). Its exact phylogenetic placement is unstable to date, although evidence has pointed to a close relationship with *Astreopora* (Fukami et al. 2008; Kitahara et al. 2010b, 2014; Huang and Roy 2015; Kitano et al. 2014; Fig. 4.1).

Another group that underwent taxonomic changes relatively early was Siderastreidae. Fukami et al. (2008) first showed that the family was polyphyletic, with *Siderastrea* placed in the “complex” clade while the rest of the family was deep within the “robust” clade. Furthermore, Benzoni et al. (2007, 2010) found strong support to distinguish *Psammocora* from other “robust” siderastreids and resurrected Psammocoridae to accommodate the genus. The most recent analyses indicated that *Coscinaraea*, *Craterastrea*, *Horastrea* and *Anomastrea* constituted a monophyletic group that is sister to Psammocoridae, so the family Coscinaraeidae was proposed to contain these genera (Benzoni et al. 2012b; see also Huang 2012; Huang and Roy 2013, 2015).

These revisions implicated the closely-related Fungiidae as two former polystomatous and attached siderastreids,

Coscinaraea wellsi and *Psammocora explanulata*, were genetically nested within the predominantly monostomatous and free-living Fungiidae and possessed the fungiid synapomorphy of compound synapticulae or fulturae, continuous buttress-like structures connecting the septa (Benzoni et al. 2007). The two rogue species were eventually transferred into *Cycloseris* (Benzoni et al. 2012a). Siderastreidae has thus been split into Siderastreidae, Psammocoridae and Coscinaraeidae, with two species transferred into Fungiidae. The latter also underwent a major reclassification based primarily on COI and ITS data, which supported the elevation of several subgenera previously in *Fungia* to genus, including *Cycloseris*, *Danafungia*, *Lobactis* and *Pleuractis* (Gittenberger et al. 2011). Several movements between genera were also proposed, such as the transfer of members of *Fungia* (*Verrillofungia*) into *Lithophyllon*, *Lithophyllon mokai* into *Cycloseris*, *Fungia* (*Danafungia*) *fralinae* into *Heliofungia*, and *Fungia* (*Wellsofungia*) *granulosa* into *Pleuractis*. Transformations of life history traits onto the molecular phylogeny further showed that the ability to be free living was lost four times and the evolution of multiple mouths occurred ten times, all independently throughout the evolutionary history of Fungiidae (Gittenberger et al. 2011).

The extreme polyphyly of the “robust” families Faviidae, Merulinidae, Mussidae and Pectiniidae revealed by Fukami et al. (2004b, 2008), coupled with the large number of species and genera in these taxa, posed severe challenges for taxonomic definitions of these corals. There was widespread acknowledgement that reclassification was necessary (Fukami 2008; Budd 2009; Budd et al. 2010), but the convergence of most macromorphological characters conventionally used to define genera and families hindered revisionary work. Many molecular (Huang et al. 2009, 2011; Benzoni et al. 2011; Arrigoni et al. 2012; Schwartz et al. 2012) and morphological (Budd and Smith 2005; Budd and Stolarski 2009, 2011) studies identified problematic taxa and highlighted phylogenetically informative characters—including molecular markers, macromorphology, micromorphology and microstructure—before the first taxonomic monograph was published.

In a massive undertaking, Budd et al. (2012) expanded Merulinidae to include all members of the “Bigmessidae” clade (XVII sensu Fukami et al. 2008), made up of mostly Indo-Pacific species from Faviidae, Merulinidae, Pectiniidae and Trachyphylliidae as defined by Veron (2000). They also relegated Faviidae to subfamily Faviinae as a group restricted to the Atlantic, and synonymised Pectiniidae and Trachyphylliidae as Merulinidae. Mussidae was redefined to include Mussinae (Atlantic mussids) and Faviinae. Finally, Pacific “mussids”, the three remaining pectiniid genera, *Echinomorpha*, *Echinophyllia* and *Oxypora*, as well as

660 *Moseleya* were placed in the new family Lobophylliidae (Dai
661 and Horng 2009b).

662 Budd et al. (2012) also proposed several modifications at
663 the genus level. The highly polyphyletic *Favia* and
664 *Montastraea* were trimmed of their Indo-Pacific and
665 “Bigmessidae” members, which were accommodated by
666 *Dipsastraea* and *Phymastrea* respectively, so that *Favia* now
667 contains *F. fragum* and *F. gravida*, while *Montastraea* only
668 includes *M. cavernosa*. *Montastraea* and *Diploastraea* were
669 also placed in their own respective families Montastraeidae
670 and Diploastraeidae as appropriate for their distinctiveness.
671 *Scolymia* became an Atlantic genus, so its Indo-Pacific con-
672 stituents became *Homophyllia australis* and *Parascolymia*
673 *vitiensis*.

674 More recently, Huang et al. (2014a, b) examined
675 Merulinidae more closely and found that more revisions at
676 the genus level were necessary. In particular, *Astrea* was res-
677 urrected and a new genus *Paramontastraea* established to
678 contain some species from *Phymastrea*, which was syn-
679 onymised as *Favites*. *Coelastrea* was revived and a new
680 genus *Paragoniastrea* described to accommodate distinct
681 species previously classed in *Goniastrea*. *Barabattoia* and
682 *Paraclavarina* were neither genetically nor morphologically
683 separated from *Dipsastraea* and *Merulina* respectively, and
684 were thus synonymised.

685 Major changes to the recently-established Lobophylliidae
686 are ongoing, as Arrigoni et al. (2014b) considered
687 *Australomussa* as a junior synonym of *Parascolymia*, and
688 also resurrected *Sclerophyllia* to accommodate *S. margariti-*
689 *cola* and its sister species *S.* (previously *Acanthastrea*) *max-*
690 *ima* that are endemic to waters surrounding the Arabian
691 peninsula (Arrigoni et al. 2015).

692 Several taxa thought to be closely affiliated with Pacific
693 “faviids” and “mussids”—Merulinidae and Lobophylliidae
694 respectively—are now in distant “robust” taxa. Dai and
695 Horng (2009b) transferred *Plesiastrea* into Plesiastreidae
696 (clade XIV sensu Fukami et al. 2008), although only the
697 move of the type species *P. versipora* has been validated
698 since *P. devantieri* is in *Astrea*, Merulinidae (Huang et al.
699 2014b). *Blastomussa* was also transferred into Plesiastreidae
700 (Dai and Horng 2009b), but it has been considered *incertae*
701 *sedis* more recently (Budd et al. 2012; Benzoni et al. 2014)
702 as *Plesiastrea* is more closely related to the azooxanthellate
703 species *Cyathelia axillaris*, *Trochocyathus efateensis* and
704 *Tethocyathus virgatus* (Kitahara et al. 2010b; Benzoni et al.
705 2011; Huang 2012; Huang and Roy 2013, 2015). Furthermore,
706 the closest relatives of *Blastomussa* are *Physogyra*, *Plerogyra*
707 and *Nemzenophyllia*, all previously in the “complex”
708 Euphylliidae and now *incertae sedis* (Fukami et al. 2008;
709 Kitahara et al. 2010b; Benzoni et al. 2014). *Oulastrea* is part
710 of a deep-branching clade sister to Fungiidae, Psammocoridae
711 and Coscinaraeidae (Huang 2012; Huang and Roy 2013,
712 2015), and may revert to the family Oulastreidae (Veron

2013). Perhaps the most enigmatic and still unresolved case
713 of a former Pacific “faviid” is that of *Leptastrea*, which has
714 been consistently shown as closely related to Fungiidae
715 based on different markers (Romano and Palumbi 1996;
716 Romano and Cairns 2000; Fukami et al. 2008; Kitahara et al.
717 2010b) despite striking differences in morphology between
718 this genus and any of the known mushroom coral genera.
719

720 While the first integrative taxonomic revision was per-
721 formed for Acroporidae in the “complex” clade, progress on
722 other “complex” groups has been limited compared to the
723 “robust” corals. Only recently was the first comprehensive
724 revision of Poritidae published. Kitano et al. (2014) analysed
725 samples from all five poritid genera using COI and ITS to
726 show that *Porites* was monophyletic, but *Machadoporites*
727 and *Poritipora* cannot be distinguished from *Goniopora* and
728 were thus synonymised. The authors also found that
729 *Goniopora stutchburyi* was genetically isolated from its con-
730 generic but was the only sister species of *Stylaraea*, and
731 thus moved it into a new genus, *Bernardopora*.

732 The azooxanthellate corals have lagged far behind in
733 terms of revisionary work, due to much fewer taxonomists
734 working on the numerous scleractinian lineages that contain
735 them. Nevertheless, problematic taxa have been identified
736 through broad-scale phylogenetic analyses (Kitahara et al.
737 2010b; Stolarski et al. 2011), and revisions have commenced.
738 For instance, *Dactylotrachus cervicornis* was genetically
739 nested among Agariciidae species, so Kitahara et al. (2012)
740 moved it from Caryophylliidae into Agariciidae, making it
741 the first extant agariciid that is solitary and azooxanthellate.
742 An azooxanthellate shallow-water agariciid, *Leptoseris trog-*
743 *lodyta*, was described shortly after (Hoeksema 2012).
744 Finally, a new family Deltocyathiidae that included nearly all
745 the species of *Deltocyathus* was established for an early-
746 diverging clade traditionally placed in Caryophylliidae
747 (Kitahara et al. 2013).

4.5 Detection of Species Boundaries 748

749 Identification of coral species has always been problematic.
750 The overlap of morphological variation between and within
751 colonies (i.e., between corallites) obscures species boundar-
752 ies. Although species delimitation among scleractinian corals
753 has been studied for many corals, data are still limited.
754 The most studied coral in this respect is the *Orbicella annu-*
755 *laris* complex. This group of three species, *O. annularis*, *O.*
756 *franki* and *O. faveolata*, is amongst the dominant corals of
757 many Caribbean reefs. Historically, they have been consid-
758 ered as one species, *O. annularis*, with several morphs dis-
759 tributed along various environmental gradients, including
760 different depths and reef zones (Graus and Macintyre 1976,
761 1989). However, a tremendous number of studies on mor-
762 phology, reproduction, ecology, growth rates and genetics

763 have been carried out (Knowlton et al. 1992, 1997; van
764 Veghel and Bak 1993, 1994; van Veghel 1994; van Veghel
765 and Kahmann 1994; Weil and Knowlton 1994; van Veghel
766 and Bosscher 1995; van Veghel et al. 1996; Lopez and
767 Knowlton 1997; Szmant et al. 1997; Lopez et al. 1999;
768 Medina et al. 1999; Manica and Carter 2000; Knowlton and
769 Budd 2001; Fukami et al. 2004a; Levitan et al. 2004, 2011),
770 nearly all of which showing that the complex is not a single
771 species with high morphological variation but comprises
772 three separate species.

773 The research effort devoted to resolving the *Orbicella*
774 *annularis* complex was unprecedented for corals, and
775 remains unmatched for other taxa that are seemingly as com-
776 plex. Nevertheless, there have been several cases whereby
777 species complexes showed varied levels of separation and no
778 taxonomic action was taken. We describe some of these
779 examples as follows.

780 In order to investigate species boundaries, crossing exper-
781 iments and spawning observations are the most precise
782 approaches to test for reproductive isolation between species
783 (Lang 1984). However, data from such studies are limited in
784 terms of taxonomic and geographic coverage. Crosses have
785 been tested for a variety of *Acropora* species and interspecific
786 fertilisation observed in several combinations (Willis et al.
787 1997; Hatta et al. 1999; van Oppen et al. 2002; Fukami et al.
788 2003; Isomura et al. 2013). Nevertheless, interspecific fertili-
789 sation rates tend to be lower than intraspecific ones (Wei
790 et al. 2012), allowing species boundaries to be defined (Willis
791 et al. 2006). *Acropora* colonies with intermediate morpholo-
792 gies between species are generally not used for such experi-
793 ments and remain challenging subjects for taxonomic
794 research. Species boundaries of such difficult morphologies
795 have been explored in two instances. First, five species and
796 seven morphs from the *A. humilis* species group were exam-
797 ined by Wolstenholme (2004) for their reproductive patterns
798 and molecular phylogeny. The data indicated that the five
799 species were valid and the morphs at different stages of
800 divergence from the valid species. Second, Suzuki and
801 Fukami (2012) analysed the fertilisation rates and molecular
802 phylogenetic relationships of three morphs of *A. solitaryen-*
803 *sis* and found that two morphs were actual variants of the
804 species while the last one was an undescribed species.

805 The merulinid genus *Platygyra* has also been used in mul-
806 tiple experimental crosses due to its abundance in the Indo-
807 Pacific and problematic species identities. Miller and
808 Babcock (1997) performed crossing experiments and
809 recorded spawning times to show that reproductive isolation
810 was severely limited among seven species in the Great
811 Barrier Reef. Moreover, Miller and Benzie (1997) found that
812 three species, *P. daedalea*, *P. sinensis* and *P. pini* contained
813 no fixed differences in allozyme frequencies. However, con-
814 trary to these results, molecular phylogenetic analysis using
815 ITS sequences revealed clear genetic differences between

P. sinensis and *P. pini* in Hong Kong (Lam and Morton 2003). 816
817 To date, species boundaries among *Platygyra* species remain
818 unresolved, although results have so far suggested that geo-
819 graphic variation in the degree of species separation is
820 apparent.

821 Cryptic diversity within species exists in several other
822 corals. For example, comparisons of *Mycedium elephantotus*
823 colonies between different localities in Taiwan revealed the
824 existence of at least two reproductive groups based on tim-
825 ings of gametogenesis and spawning, supported by allozyme
826 electrophoretic data (Dai et al. 2000). In fact, intraspecific
827 differentiation was detected between co-occurring popula-
828 tions of *Cycloseris costulata* in Indonesia (Gittenberger and
829 Hoeksema 2006), *P. daedalea* in Kenya (Mangubhai et al.
830 2007), and *Favites valenciennesi* in Japan (Fukami and
831 Nomura 2009). Larger geographic contrasts such as between
832 Red Sea and Pacific Ocean populations of *Dipsastraea* and
833 *Stylophora* have also revealed molecular separation between
834 regions (Stefani et al. 2011; Arrigoni et al. 2012;
835 Keshavmurthy et al. 2013). However, to reach a stage where
836 taxonomic revisions can be attempted, broad geographic
837 sampling across the Indo-Pacific and detailed studies of
838 closely-related species are necessary, such as in the case of
839 species in *Astreopora* (Suzuki and Nomura 2013),
840 *Pocillopora* (Pinzón and LaJeunesse 2010; Pinzón et al.
841 2012, 2013; Torda et al. 2013a, b; Marti-Puig et al. 2014;
842 Schmidt-Roach et al. 2013, 2014) and *Psammocora* (Benzoni
843 et al. 2010; Stefani et al. 2008a). In particular, boundaries
844 among *Psammocora* species were clarified through a series
845 of rigorous molecular and morphological analyses (Stefani
846 et al. 2008a, b; Benzoni et al. 2007, 2010), which saw 24
847 nominal species reorganised as seven valid species—*P.*
848 *albopicta*, *P. contigua*, *P. digitata*, *P. haimiana*, *P. nierstraszi*,
849 *P. profundacella* and *P. stellata*.

850 Crossing experiments are usually performed for
851 broadcast-spawning corals because it is relatively easy to
852 collect eggs and sperm, but are difficult to apply on species
853 that brood, are gonochoric or release daughter colonies asex-
854 ually. Temporal reproductive isolation has been examined in
855 some fungiids (Loya et al. 2009), but for other taxa, detailed
856 morphological analyses with type material combined with
857 molecular methods have been used to define species bound-
858 aries, such as in *Pocillopora damicornis* (Schmidt-Roach
859 et al. 2014) and *Goniopora stokesi* (Kitano et al. 2013).
860 Considering that coral spawning usually occurs once a year,
861 it may be prudent to use these approaches on top of crossing
862 experiments. Unfortunately, the latter may be the only way
863 to tell species apart as some closely-related corals may be
864 indistinguishable with morphological and molecular meth-
865 ods (e.g., Forsman et al. 2009).

866 An important goal of species delimitation is to character-
867 ise intraspecific morphological variation, but cryptic species
868 that are still undergoing introgression may occur without

869 fixed morphological differences throughout their distribu-
870 tion, such as in *Acropora cytherea* and *A. hyacinthus* (Ladner
871 and Palumbi 2012). We expect more corals to possess such a
872 signature, but an unambiguous procedure to deal with them
873 taxonomically remains to be established.

874 4.6 Unresolved Taxa and the Future 875 of Coral Systematics

876 Much of biology depends critically on a reliable taxonomic
877 framework (Wheeler 2004). In modern times, such a frame-
878 work has been built with molecular data on top of traditional
879 and updated morphological evidence that has been the main-
880 stay of taxonomy. Often, developmental, reproductive, and
881 other ecological data are also gleaned for such research.
882 Within the last two decades, coral biologists have developed
883 a systematic phylogenetic approach that integrates these
884 lines of evidence. Indeed, molecular data have been the
885 major driving force in modern coral taxonomy, and together
886 with the application of new techniques to explore subcoral-
887 lite morphology, new light is still being shed on scleractinian
888 phylogeny.

889 Although morphological evidence to support the three
890 deep molecular clades is still scarce, microstructural charac-
891 ters such as the structure and arrangement of rapid accretion
892 deposits and thickening deposits have proven to be phyloge-
893 netically informative at the family level (Budd and Stolarski
894 2011; Kitahara et al. 2013; Arrigoni et al. 2014a).
895 Micromorphological traits such as shape of septal teeth, the
896 development of secondary calcification axes and correspond-
897 ing granulation on septal teeth and faces, the shape of the
898 area between teeth, fulturæ (Gill 1980), and others, are also
899 useful for the differentiation of some genera within zooxan-
900 thellate coral families and genera (Benzoni et al. 2007; Budd
901 and Stolarski 2009). In the same way, the delineation of pri-
902 marily azooxanthellate coral families has largely been
903 resolved, with few notable exceptions including
904 Caryophylliidae (Kitahara et al. 2010b, 2012, 2013; Stolarski
905 et al. 2011) and Oculinidae (Kitahara et al. 2010b; Huang
906 and Roy 2015).

907 While rapid improvements have been achieved in sclerac-
908 tinian systematics, there are still unresolved taxa. In reality,
909 the evolutionary positions of some families and genera, espe-
910 cially those still based solely on macromorphological charac-
911 ters (e.g., Wells 1956), remain tentative. Furthermore, only
912 about one-third of all scleractinian species have been exam-
913 ined phylogenetically (Fig. 4.1; Huang and Roy 2015), and
914 for most of these species, few genetic markers have been
915 used. Families that are still showing considerable uncertain-
916 ties in their evolutionary positions include Anthemiphyllidae,
917 Astrocoeniidae, Caryophylliidae, Oculinidae and
918 Siderastreidae (Benzoni et al. 2007; Fukami et al. 2008;

Kitahara et al. 2010b, 2012; Huang 2012; Huang and Roy 919
2013, 2015). In the case of genera, the emerging picture is 920
even more concerning, as we are still unable to place many 921
of them precisely on the phylogeny. They include 922
Anthemiphyllia, *Astrangia*, *Catalaphyllia*, *Cladocora*, 923
Culicia, *Gyrosmlia*, *Indophyllia*, *Leptastrea*, *Montigyra*, 924
Paracyathus, *Polycyathus*, *Simplastrea*, *Solenastrea* and 925
Stephanocyathus. Representatives of some of these genera 926
are rare or restricted to remote localities and sampling them 927
for molecular analyses poses a practical challenge. 928
Nevertheless, some genera with sufficient numbers of repre- 929
sentatives tested have been shown to be para- or polyphy- 930
letic. Among them, some of the most problematic genera are 931
within the families Agariciidae (*Leptoseris* and *Pavona*), 932
Dendrophylliidae (*Balanophyllia*, *Cladopsammia*, 933
Dendrophyllia and *Rhizopsammia*), Caryophylliidae 934
(*Phyllangia* and *Rhizosmlia*), Euphylliidae (*Euphyllia* and 935
Galaxea), Flabellidae (*Flabellum* and *Truncatoflabellum*) 936
and Oculinidae (*Oculina*). Unfortunately, only a few genetic 937
markers have been sequenced from these genera, and most 938
are only informative at higher taxonomic levels. 939

940 Endeavouring to improve our understanding of scleractin- 941
ian evolution as a lineage and as a system, we recognise and 942
consider some important future research directions. Amongst 943
these, the most obvious is “the species problem in corals” as 944
foreshadowed by Hoffmeister (1926: 151) and nowadays 945
made increasingly clear by the application of molecular tech- 946
niques; establishing a clear and unambiguous phylogenetic 947
framework must be one of the first challenges to be addressed. 948
Since reliable taxonomic information is essential for the 949
interpretation of molecular phylogenies, institutional and 950
financial investments should be made toward building strong 951
specimen collections and spurring rigorous taxonomic 952
research. In particular, the inclusion of more material with 953
broader taxon coverage and multiple sampling localities in 954
future phylogenetic studies should be supported consistently 955
by in situ images, collection of voucher specimens and fixed 956
tissue samples for deposition in accessible repositories. This 957
will allow re-examination of evidence as new molecular and 958
morphological techniques become available. Moreover, 959
importance should also be accorded to existing historical ref- 960
erence collections, including type material of extant and 961
extinct coral taxa for which only a morphological approach 962
can be used.

963 Although coral molecular phylogenetic studies generally 964
focus heavily on few mitochondrial or ribosomal markers, 965
and whilst these have greatly improved our understanding of 966
scleractinian phylogenetic relationships, it is now clear that 967
to achieve higher resolution and to be able to investigate all 968
taxonomic levels, multiple genetic markers are essential 969
(e.g., Dunn et al. 2008; Philippe et al. 2009; Regier et al. 970
2010). In the case of corals, a stumbling block to applying 971
such multilocus phylogenetics is the paucity of single copy

972 nuclear markers that have been tested. To cross this hurdle,
 973 we must turn to high-throughput sequencing technologies
 974 for obtaining genomic or transcriptomic data for a range of
 975 corals. These methods could be used to collect near-
 976 exhaustive molecular data possibly containing phylogenetic
 977 signal at all levels. However, notwithstanding the progress
 978 expected with phylogenomics, we stress that improvement
 979 of techniques and better understanding of the taxonomic sig-
 980 nals and environment-induced variability of morphological
 981 characters are essential for advancing the field.

982 As we go forth in this new age of coral systematics, the
 983 gap between the state-of-the-art classification and practical
 984 needs of the broader scientific community appears to be wid-
 985 ening. Indeed, while taxonomic changes resulting from inte-
 986 grative analyses are increasingly being published, the
 987 outdated but understandably more widely-accepted scheme
 988 is still being applied in some recent work on corals and their
 989 associates (e.g., Ho and Dai 2014; Tsang et al. 2014; Work
 990 and Aeby 2014). A lag is to be expected before the new
 991 framework is embraced outside the restricted circle better
 992 informed of the ongoing revisions. To bridge this gap more
 993 rapidly, we urge more active collaborations between taxono-
 994 mists and ecologists, as well as more user-friendly literature
 995 such as field illustrations of corals under the revised classifi-
 996 cation (e.g., Dai and Horng 2009a, b; Licuanan 2009).

997 Thus, apart from encouraging a new generation of taxon-
 998 omists, molecular biologists, and paleontologists, the foment
 999 of multi- and interdisciplinary studies including taxonomy,
 1000 ecology, morphology, molecular biology, palaeontology and
 1001 oceanography, will shape future studies positively to help
 1002 improve our understanding of scleractinian evolution. This is
 1003 indeed a welcome development in a time of major scientific
 1004 interest and intense public concern due to the uncertain fate
 1005 of coral reefs in the face of anthropogenic challenges.

1006 References

- 1007 Addamo AM, Reimer JD, Taviani M et al (2012) *Desmophyllum dian-*
 1008 *thus* (Esper, 1794) in the scleractinian phylogeny and its intraspe-
 1009 cific diversity. PLoS One 7:e50215. doi:10.1371/journal.
 1010 pone.0050215
- 1011 Addamo AM, García-Jiménez R, Taviani M, Machordom A (2015)
 1012 Development of microsatellite markers in the deep-sea cup coral
 1013 *Desmophyllum dianthus* by 454 sequencing and cross-species
 1014 amplifications in Scleractinia order. J Hered 106:322–330.
 1015 doi:10.1093/jhered/esv010
- 1016 Adjeroud M, Guérécheau A, Vidal-Dupiol J et al (2014) Genetic diver-
 1017 sity, clonality and connectivity in the scleractinian coral *Pocillopora*
 1018 *damicornis*: a multi-scale analysis in an insular, fragmented reef
 1019 system. Mar Biol 161:531–541. doi:10.1007/s00227-013-2355-9
- 1020 Alloiteau J (1952) Embranchement des coelentérés. In: Piveteau J (ed)
 1021 Traité de paléontologie. Tome premier. Masson, Paris, pp 376–684
- 1022 Alloiteau J (1957) Contribution à la systématique des madréporaires
 1023 fossiles. Centre National de la Recherche Scientifique, Paris
- Appeltans W, Ah Yong ST, Anderson G et al (2012) The magnitude of
 1024 global marine species diversity. Curr Biol 22:1–14. doi:10.1016/j.
 1025 cub.2012.09.036
- Arrigoni R, Stefani F, Pichon M et al (2012) Molecular phylogeny of
 1026 the Robust clade (Faviidae, Mussidae, Merulinidae, and Pectiniidae):
 1027 an Indian Ocean perspective. Mol Phylogenet Evol 65:183–193.
 1028 doi:10.1016/j.ympev.2012.06.001
- Arrigoni R, Kitano YF, Stolarski J et al (2014a) A phylogeny recon-
 1029 struction of the Dendrophylliidae (Cnidaria, Scleractinia) based on
 1030 molecular and micromorphological criteria, and its ecological
 1031 implications. Zool Scr 43:661–688. doi:10.1111/zsc.12072
- Arrigoni R, Richards ZT, Chen CA et al (2014b) Taxonomy and phylo-
 1032 genetic relationships of the coral genera *Australomussa* and
 1033 *Parascolumia* (Scleractinia, Lobophylliidae). Contrib Zool
 1034 83:195–215
- Arrigoni R, Terraneo TI, Galli P, Benzoni F (2014c) Lobophylliidae
 1035 (Cnidaria, Scleractinia) reshuffled: pervasive non-monophyly at
 1036 genus level. Mol Phylogenet Evol 73:60–64. doi:10.1016/j.
 1037 ympev.2014.01.010
- Arrigoni R, Berumen ML, Terraneo TI et al (2015) Forgotten in the
 1038 taxonomic literature: resurrection of the scleractinian coral genus
 1039 *Sclerophyllia* (Scleractinia, Lobophylliidae) from the Arabian
 1040 Peninsula and its phylogenetic relationships. Syst Biodivers
 1041 13:140–163. doi:10.1080/14772000.2014.978915
- Ayre DJ, Willis BL (1988) Population structure in the coral *Pavona*
 1042 *cactus*: clonal genotypes show little phenotypic plasticity. Mar Biol
 1043 99:495–505. doi:10.1007/BF00392557
- Barbeitos MS, Romano SL, Lasker HR (2010) Repeated loss of coloni-
 1044 ality and symbiosis in scleractinian corals. Proc Natl Acad Sci U S
 1045 A 107:11877–11882. doi:10.1073/pnas.0914380107
- Benzoni F, Stefani F (2012) *Porites fontanesii*, a new species of hard
 1046 coral (Scleractinia, Poritidae) from the southern Red Sea, the Gulf
 1047 of Tadjoura, and the Gulf of Aden, and its phylogenetic relation-
 1048 ships within the genus. Zootaxa 3447:56–68
- Benzoni F, Stefani F, Stolarski J et al (2007) Debating phylogenetic
 1049 relationships of the scleractinian *Psammocora*: molecular and mor-
 1050 phological evidences. Contrib Zool 76:35–54
- Benzoni F, Stefani F, Pichon M, Galli P (2010) The name game:
 1051 morpho-molecular species boundaries in the genus *Psammocora*
 1052 (Cnidaria, Scleractinia). Zool J Linn Soc 160:421–456.
 1053 doi:10.1111/j.1096-3642.2010.00622.x
- Benzoni F, Arrigoni R, Stefani F, Pichon M (2011) Phylogeny of the
 1054 coral genus *Plesiastrea* (Cnidaria, Scleractinia). Contrib Zool
 1055 80:231–249
- Benzoni F, Arrigoni R, Stefani F et al (2012a) Phylogenetic position
 1056 and taxonomy of *Cycloseris explanulata* and *C. wellsii* (Scleractinia:
 1057 Fungiidae): lost mushroom corals find their way home. Contrib
 1058 Zool 81:125–146
- Benzoni F, Arrigoni R, Stefani F, Stolarski J (2012b) Systematics of the
 1059 coral genus *Craterastrea* (Cnidaria, Anthozoa, Scleractinia) and
 1060 description of a new family through combined morphological and
 1061 molecular analyses. Syst Biodivers 10:417–433. doi:10.1080/14772
 1062 000.2012.744369
- Benzoni F, Arrigoni R, Waheed Z et al (2014) Phylogenetic relation-
 1063 ships and revision of the genus *Blastomussa* (Cnidaria: Anthozoa:
 1064 Scleractinia) with description of a new species. Raffles Bull Zool
 1065 62:358–378
- Best MB, Boekschoten GJ, Oosterbaan A (1984) Species concept and
 1066 ecomorph variation in living and fossil Scleractinia. Palaeontogr
 1067 Am 54:70–79
- Bongaerts P, Frade PR, Ogier JJ et al (2013) Sharing the slope: depth
 1068 partitioning of agariciid corals and associated *Symbiodinium* across
 1069 shallow and mesophotic habitats (2–60 m) on a Caribbean reef.
 1070 BMC Evol Biol 13:205. doi:10.1186/1471-2148-13-205

- 1088 Boulay JN, Hellberg ME, Cortés J, Baums IB (2014) Unrecognized
1089 coral species diversity masks differences in functional ecology. *Proc*
1090 *R Soc B Biol Sci* 281:20131580. doi:10.1098/rspb.2013.1580
- 1091 Brazeau DA, Gleason DF, Morgan ME (1998) Self-fertilization in
1092 brooding hermaphroditic Caribbean corals: evidence from molecu-
1093 lar markers. *J Exp Mar Biol Ecol* 231:225–238. doi:10.1016/
1094 S0022-0981(98)00097-5
- 1095 Budd AF (1993) Variation within and among morphospecies of
1096 *Montastraea*. *Cour Forsch Inst Senckenb* 164:241–254
- 1097 Budd AF (2009) Encyclopedia of life synthesis meeting report: system-
1098 atics and evolution of scleractinian corals. National Museum of
1099 Natural History, Smithsonian Institution, Washington, DC
- 1100 Budd AF, Smith ND (2005) Diversification of a new Atlantic clade of
1101 scleractinian reef corals: insights from phylogenetic analysis of
1102 morphologic and molecular data. *Paleontol Soc Pap* 11:103–128
- 1103 Budd AF, Stolarski J (2009) Searching for new morphological charac-
1104 ters in the systematics of scleractinian reef corals: comparison of
1105 septal teeth and granules between Atlantic and Pacific Mussidae.
1106 *Acta Zool* 90:142–165. doi:10.1111/j.1463-6395.2008.00345.x
- 1107 Budd AF, Stolarski J (2011) Corallite wall and septal microstructure in
1108 scleractinian reef corals: comparison of molecular clades within the
1109 family Faviidae. *J Morphol* 272:66–88. doi:10.1002/jmor.10899
- 1110 Budd AF, Romano SL, Smith ND, Barbeitos MS (2010) Rethinking the
1111 phylogeny of scleractinian corals: a review of morphological and
1112 molecular data. *Integr Comp Biol* 50:411–427. doi:10.1093/icb/
1113 icq062
- 1114 Budd AF, Fukami H, Smith ND, Knowlton N (2012) Taxonomic clas-
1115 sification of the reef coral family Mussidae (Cnidaria: Anthozoa:
1116 Scleractinia). *Zool J Linn Soc* 166:465–529.
1117 doi:10.1111/j.1096-3642.2012.00855.x
- 1118 Cairns SD (1984) An application of phylogenetic analysis to the
1119 Scleractinia: family Fungiidae. *Palaeontogr Am* 54:49–57
- 1120 Cairns SD (1997) A generic revision and phylogenetic analysis of the
1121 Turbinoliidae (Cnidaria: Scleractinia). *Smithson Contrib Zool*
1122 591:1–55. doi:10.5479/si.00810282.591
- 1123 Cairns SD (1999) Species richness of recent Scleractinia. *Atoll Res*
1124 *Bull* 459:1–12
- 1125 Cairns SD (2001) A generic revision and phylogenetic analysis of the
1126 Dendrophylliidae (Cnidaria: Scleractinia). *Smithson Contrib Zool*
1127 615:1–75. doi:10.5479/si.00810282.615
- 1128 Cairns SD (2009) Phylogenetic list of 722 valid recent azooxanthellate
1129 scleractinian species, with their junior synonyms and depth ranges.
1130 In: Roberts JM, Wheeler A, Freiwald A, Cairns SD (eds) *Cold-*
1131 *water corals: the biology and geology of deep-sea coral habitats*.
1132 Cambridge University Press, Cambridge, Online appendix. [http://](http://www.lophelia.org/online-appendices)
1133 www.lophelia.org/online-appendices
- 1134 Chen CA, Yu J-K (2000) Universal primers for amplification of mito-
1135 chondrial small subunit ribosomal RNA-encoding gene in scleractin-
1136 ian corals. *Mar Biotechnol* 2:146–153. doi:10.1007/s101269900018
- 1137 Chen CA, Odorico DM, ten Lohuis M et al (1995) Systematic relation-
1138 ships within the Anthozoa (Cnidaria: Anthozoa) using the 5'-end of
1139 the 28S rDNA. *Mol Phylogenet Evol* 4:175–183
- 1140 Chen CA, Wallace CC, Yu J-K, Wei NV (2000) Strategies for amplifica-
1141 tion by polymerase chain reaction of the complete sequence of the
1142 gene encoding nuclear large subunit ribosomal RNA in corals. *Mar*
1143 *Biotechnol* 2:558–570
- 1144 Chen CA, Wallace CC, Wolstenholme JK (2002) Analysis of the mito-
1145 chondrial 12S rRNA gene supports a two-clade hypothesis of the
1146 evolutionary history of scleractinian corals. *Mol Phylogenet Evol*
1147 23:137–149. doi:10.1016/S1055-7903(02)00008-8
- 1148 Chen CA, Chang CC, Wei NV et al (2004) Secondary structure and
1149 phylogenetic utility of the ribosomal internal transcribed spacer 2
1150 (ITS2) in scleractinian corals. *Zool Stud* 43:759–771
- 1151 Chen I-P, Tang C-Y, Chiou C-Y et al (2009) Comparative analyses of
1152 coding and noncoding DNA regions indicate that *Acropora*
1153 (Anthozoa: Scleractinia) possesses a similar evolutionary tempo of
nuclear vs. mitochondrial genomes as in plants. *Mar Biotechnol* 11:141–152. doi:10.1007/s10126-008-9129-2
- Chevalier J-P, Beauvais L (1987) Ordre des scléactiniaires:
XI. Systématique. In: Grassé P-P, Doumenc D (eds) *Traité de zoolo-*
1157 *gie*. Tome III. Cnidaires: Anthozoaires. Masson, Paris, pp 679–764
1158
- Concepcion GT, Medina M, Toonen RJ (2006) Noncoding mitochon-
1159 drial loci for corals. *Mol Ecol Notes* 6:1208–1211.
1160 doi:10.1111/j.1471-8286.2006.01493.x
- Concepcion GT, Polato NR, Baums IB, Toonen RJ (2010) Development
1162 of microsatellite markers from four Hawaiian corals: *Acropora*
1163 *cytherea*, *Fungia scutaria*, *Montipora capitata* and *Porites lobata*.
1164 *Conserv Genet Resour* 2:11–15. doi:10.1007/s12686-009-9118-4
- Cuif J-P, Perrin C (1999) Micromorphology and microstructure as
1166 expressions of scleractinian skeletogenesis in *Favia fragum* (Esper,
1167 1795) (Faviidae, Scleractinia). *Zoosystema* 21:137–156
- Cuif J-P, Lecointre G, Perrin C et al (2003) Patterns of septal biominer-
1169 alization in Scleractinia compared with their 28S rRNA phylogeny:
1170 a dual approach for a new taxonomic framework. *Zool Scr*
1171 32:459–473
- Curnick DJ, Head CEI, Huang D et al (2015) Setting evolutionary-
1173 based conservation priorities for a phylogenetically data-poor taxo-
1174 nomic group (Scleractinia). *Anim Conserv*. doi:10.1111/acv.12185
- Dai C-F, Horng S (2009a) Scleractinia fauna of Taiwan. I. The complex
1176 group. National Taiwan University, Taipei
- Dai C-F, Horng S (2009b) Scleractinia fauna of Taiwan. II. The robust
1178 group. National Taiwan University, Taipei
- Dai C-F, Fan T-Y, Yu J-K (2000) Reproductive isolation and genetic
1180 differentiation of a scleractinian coral *Mycedium elephantotus*. *Mar*
1181 *Ecol Prog Ser* 201:179–187. doi:10.3354/meps201179
- Daly M, Fautin DG, Cappola VA (2003) Systematics of the Hexacorallia
1183 (Cnidaria: Anthozoa). *Zool J Linn Soc* 139:419–437.
1184 doi:10.1046/j.1096-3642.2003.00084.x
- Davies SW, Rahman M, Meyer E et al (2013) Novel polymorphic mic-
1186 rosatellite markers for population genetics of the endangered
1187 Caribbean star coral, *Montastraea faveolata*. *Mar Biodivers*
1188 43:167–172. doi:10.1007/s12526-012-0133-4
- Diekmann OE, Bak RPM, Stam WT, Olsen JL (2001) Molecular
1190 genetic evidence for probable reticulate speciation in the coral
1191 genus *Madracis* from a Caribbean fringing reef slope. *Mar Biol*
1192 139:221–233. doi:10.1007/s002270100584
- Dunn CW, Hejnal A, Matus DQ et al (2008) Broad phylogenomic sam-
1194 pling improves resolution of the animal tree of life. *Nature* 452:745–
1195 749. doi:10.1038/nature06614
- Emblem Å, Karlsen BO, Evertsen J, Johansen SD (2011) Mitogenome
1197 rearrangement in the cold-water scleractinian coral *Lophelia per-*
1198 *tusa* (Cnidaria, Anthozoa) involves a long-term evolving group I
1199 intron. *Mol Phylogenet Evol* 61:495–503. doi:10.1016/j.
1200 [ympev.2011.07.012](http://www.sciencedirect.com/science/article/pii/S0169534711007012)
- Esper EJC (1795) Fortsetzungen der Pflanzenthiere in Abbildungen
1202 nach der Natur mit Farben erleuchtet nebst Beschreibungen.
1203 Raspeschen Buchhandlung, Nürnberg
- Ezaki Y (1997) The Permian coral *Numidiaphyllum*: new insights into
1205 anthozoan phylogeny and Triassic scleractinian origins.
1206 *Palaeontology* 40:1–40
- Ezaki Y (2000) Palaeoecological and phylogenetic implications of a
1208 new scleractiniamorph genus from Permian sponge reefs, south
1209 China. *Palaeontology* 43:199–217. doi:10.1111/1475-4983.00124
- Faircloth BC, McCormack JE, Crawford NG et al (2012) Ultraconserved
1211 elements anchor thousands of genetic markers spanning multiple
1212 evolutionary timescales. *Syst Biol* 61:717–726. doi:10.1093/sysbio/
1213 [sys004](http://www.sciencedirect.com/science/article/pii/S1063515012000004)
- Farris JS, Källersjö M, Kluge AG, Bult C (1995) Testing significance of
1215 incongruence. *Cladistics* 10:315–319
- Flot J-F (2007) CHAMPURU 1.0: a computer software for unraveling
1217 mixtures of two DNA sequences of unequal lengths. *Mol Ecol*
1218 *Notes* 7:974–977

- 1220 Flot J-F (2010) SeqPHASE: a web tool for interconverting phase input/
1221 output files and fasta sequence alignments. *Mol Ecol Resour*
1222 10:162–166. doi:10.1111/j.1755-0998.2009.02732.x
- 1223 Flot J-F, Tillier S (2006) Molecular phylogeny and systematics of the
1224 scleractinian coral genus *Pocillopora* in Hawaii. *Proc 10th Int Coral*
1225 *Reef Symp*, pp 24–29
- 1226 Flot J-F, Tillier A, Samadi S, Tillier S (2006) Phase determination from
1227 direct sequencing of length-variable DNA regions. *Mol Ecol Notes*
1228 6:627–630. doi:10.1111/j.1471-8286.2006.01355.x
- 1229 Flot J-F, Magalon H, Cruaud C et al (2008) Patterns of genetic structure
1230 among Hawaiian corals of the genus *Pocillopora* yield clusters of
1231 individuals that are compatible with morphology. *C R Biol* 331:239–
1232 247. doi:10.1016/j.crvi.2007.12.003
- 1233 Flot J-F, Couloux A, Tillier S (2010) Haplowebs as a graphical tool for
1234 delimiting species: a revival of Doyle's "field for recombination"
1235 approach and its application to the coral genus *Pocillopora* in
1236 Clipperton. *BMC Evol Biol* 10:372. doi:10.1186/1471-
1237 2148-10-372
- 1238 Flot J-F, Blanchot J, Charpy L et al (2011) Incongruence between mor-
1239 photypes and genetically delimited species in the coral genus
1240 *Stylophora*: phenotypic plasticity, morphological convergence,
1241 morphological stasis or interspecific hybridization? *BMC Ecol*
1242 11:22. doi:10.1186/1472-6785-11-22
- 1243 Forskål P (1775) *Descriptiones animalium, avium, amphibiorum,*
1244 *piscium, insectorum, vermium. Quae In Itinere Orientali Observavit*
1245 *Petrus Forskål. ex officina Mölleri, Hauniæ*
- 1246 Forsman ZH, Guzman HM, Chen CA et al (2005) An ITS region phy-
1247 logeny of *Siderastrea* (Cnidaria: Anthozoa): is *S. glynni* endangered
1248 or introduced? *Coral Reefs* 24:343–347. doi:10.1007/
1249 s00338-005-0497-z
- 1250 Forsman ZH, Hunter CL, Fox GE, Wellington GM (2006) Is the ITS
1251 region the solution to the "species problem" in corals? Intra-genomic
1252 variation, and alignment permutations in *Porites*, *Siderastrea* and
1253 outgroup taxa. *Proc 10th Int Coral Reef Symp*, pp 14–23
- 1254 Forsman ZH, Barshis DJ, Hunter CL, Toonen RJ (2009) Shape-shifting
1255 corals: molecular markers show morphology is evolutionarily plas-
1256 tic in *Porites*. *BMC Evol Biol* 9:45. doi:10.1186/1471-2148-9-45
- 1257 Forsman ZH, Concepcion GT, Haverkort RD et al (2010) Ecomorph or
1258 endangered coral? DNA and microstructure reveal Hawaiian spe-
1259 cies complexes: *Montipora dilatata/flabellata/turgescens* & *M.*
1260 *patula/verrilli*. *PLoS One* 5:e15021. doi:10.1371/journal.
1261 pone.0015021
- 1262 Forsman Z, Wellington GM, Fox GE, Toonen RJ (2015) Clues to unrav-
1263 eling the coral species problem: distinguishing species from geo-
1264 graphic variation in *Porites* across the Pacific with molecular
1265 markers and microskeletal traits. *Peer J* 3:e751. doi:10.7717/
1266 peerj.751
- 1267 Foster AB (1979a) Environmental variation in a fossil scleractinian
1268 coral. *Lethaia* 12:245–264. doi:10.1111/j.1502-3931.1979.
1269 tb01004.x
- 1270 Foster AB (1979b) Phenotypic plasticity in the reef corals *Montastraea*
1271 *annularis* (Ellis & Solander) and *Siderastrea siderea* (Ellis &
1272 Solander). *J Exp Mar Biol Ecol* 39:25–54. doi:10.1016/
1273 0022-0981(79)90003-0
- 1274 Foster AB (1980) Environmental variation in skeletal morphology
1275 within the Caribbean reef corals *Montastraea annularis* and
1276 *Siderastrea siderea*. *Bull Mar Sci* 30:678–709
- 1277 Fukami H (2008) Short review: molecular phylogenetic analyses of reef
1278 corals. *Galaxea* 10:47–55
- 1279 Fukami H, Knowlton N (2005) Analysis of complete mitochondrial
1280 DNA sequences of three members of the *Montastraea annularis*
1281 coral species complex (Cnidaria, Anthozoa, Scleractinia). *Coral*
1282 *Reefs* 24:410–417
- 1283 Fukami H, Nomura K (2009) Existence of a cryptic species of
1284 *Montastraea valenciennesi* (Milne Edwards and Haime, 1848) in
Wakayama, southern Honshu, Japan [in Japanese]. *J Jpn Coral Reef* 1285
Soc 11:25–31 1286
- Fukami H, Omori M, Hatta M (2000) Phylogenetic relationships in the
1287 coral family Acroporidae, reassessed by inference from mitochon-
1288 drial genes. *Zool Sci* 17:689–696 1289
- Fukami H, Omori M, Shimoike K et al (2003) Ecological and genetic
1290 aspects of reproductive isolation by different spawning times in
1291 *Acropora* corals. *Mar Biol* 142:679–684. doi:10.1007/s00227-
1292 002-1001-8 1293
- Fukami H, Budd AF, Levitan DR et al (2004a) Geographic differences
1294 in species boundaries among members of the *Montastraea annu-*
1295 *laris* complex based on molecular and morphological markers.
1296 *Evolution* 58:324–337. doi:10.1111/j.0014-3820.2004.tb01648.x 1297
- Fukami H, Budd AF, Paulay G et al (2004b) Conventional taxonomy
1298 obscures deep divergence between Pacific and Atlantic corals.
1299 *Nature* 427:832–835. doi:10.1038/nature02339 1300
- Fukami H, Chen CA, Budd AF et al (2008) Mitochondrial and nuclear
1301 genes suggest that stony corals are monophyletic but most families
1302 of stony corals are not (Order Scleractinia, Class Anthozoa, Phylum
1303 Cnidaria). *PLoS One* 3:e3222. doi:10.1371/journal.pone.0003222 1304
- Gill GA (1980) The fulturæ ("compound synapticulae"), their structure
1305 and reconsideration of their systematic value. *Acta Palaeontol Pol*
1306 25:301–310 1307
- Gittenberger A, Hoeksema BW (2006) Phenotypic plasticity revealed
1308 by molecular studies on reef corals of *Fungia* (*Cycloseris*) spp.
1309 (Scleractinia: Fungiidae) near river outlets. *Contrib Zool*
1310 75:195–201 1311
- Gittenberger A, Reijnen BT, Hoeksema BW (2011) A molecularly
1312 based phylogeny reconstruction of mushroom corals (Scleractinia:
1313 Fungiidae) with taxonomic consequences and evolutionary implica-
1314 tions for life history traits. *Contrib Zool* 80:107–132 1315
- Graus RR, Macintyre IG (1976) Light control of growth form in colo-
1316 nial reef corals: computer simulation. *Science* 193:895–897.
1317 doi:10.1126/science.193.4256.895 1318
- Graus RR, Macintyre IG (1989) The zonation patterns of Caribbean
1319 coral reefs as controlled by wave and light energy input, bathymet-
1320 ric setting and reef morphology: computer simulation experiments.
1321 *Coral Reefs* 8:9–18 1322
- Hatta M, Fukami H, Wang W et al (1999) Reproductive and genetic
1323 evidence for a reticulate evolutionary history of mass-spawning corals.
1324 *Mol Biol Evol* 16:1607–1613 1325
- Heled J, Drummond AJ (2010) Bayesian inference of species trees from
1326 multilocus data. *Mol Biol Evol* 27:570–580. doi:10.1093/molbev/
1327 msp274 1328
- Hellberg ME (2006) No variation and low synonymous substitution
1329 rates in coral mtDNA despite high nuclear variation. *BMC Evol*
1330 *Biol* 6:24. doi:10.1186/1471-2148-6-24 1331
- Heyward AJ, Stoddart JA (1985) Genetic structure of two species of
1332 *Montipora* on a patch reef: conflicting results from electrophoresis
1333 and histocompatibility. *Mar Biol* 85:117–121 1334
- Ho M-J, Dai C-F (2014) Coral recruitment of a subtropical coral com-
1335 munity at Yenliao Bay, northern Taiwan. *Zool Stud* 53:5.
1336 doi:10.1186/1810-522X-53-5 1337
- Hoeksema BW (1989) Taxonomy, phylogeny and biogeography of
1338 mushroom corals (Scleractinia: Fungiidae). *Zool Verh Leiden*
1339 254:1–295 1340
- Hoeksema BW (1991) Evolution of body size in mushroom corals
1341 (Scleractinia: Fungiidae) and its ecomorphological consequences.
1342 *Neth J Zool* 41:112–129. doi:10.1163/156854291X00072 1343
- Hoeksema BW (1993) Historical biogeography of *Fungia* (*Pleuraetis*)
1344 spp. (Scleractinia: Fungiidae), including a new species from the
1345 Seychelles. *Zool Meded Leiden* 67:639–654 1346
- Hoeksema BW (2012) Forever in the dark: the cave-dwelling azooxan-
1347 thellate reef coral *Leptoseris troglodyta* sp. n. (Scleractinia,
1348 Agariciidae). *Zoo Keys* 228:21–37. doi:10.3897/zookeys.228.3798 1349

- 1350 Hoffmeister JE (1926) The species problem in corals. *Am J Sci* 12:151–156. doi:[10.2475/ajs.s5-12.68.151](https://doi.org/10.2475/ajs.s5-12.68.151)
- 1351 Huang D (2012) Threatened reef corals of the world. *PLoS One* 7:e34459. doi:[10.1371/journal.pone.0034459](https://doi.org/10.1371/journal.pone.0034459)
- 1352 Huang D, Roy K (2013) Anthropogenic extinction threats and future loss of evolutionary history in reef corals. *Ecol Evol* 3:1184–1193. doi:[10.1002/ece3.527](https://doi.org/10.1002/ece3.527)
- 1353 Huang D, Roy K (2015) The future of evolutionary diversity in reef corals. *Philos Trans R Soc B Biol Sci* 370:20140010. doi:[10.1098/rstb.2014.0010](https://doi.org/10.1098/rstb.2014.0010)
- 1354 Huang D, Meier R, Todd PA, Chou LM (2008) Slow mitochondrial COI sequence evolution at the base of the metazoan tree and its implications for DNA barcoding. *J Mol Evol* 66:167–174. doi:[10.1007/s00239-008-9069-5](https://doi.org/10.1007/s00239-008-9069-5)
- 1355 Huang D, Meier R, Todd PA, Chou LM (2009) More evidence for pervasive paraphyly in scleractinian corals: systematic study of south-east Asian Faviidae (Cnidaria; Scleractinia) based on molecular and morphological data. *Mol Phylogenet Evol* 50:102–116. doi:[10.1016/j.ympev.2008.10.012](https://doi.org/10.1016/j.ympev.2008.10.012)
- 1356 Huang D, Licuanan WY, Baird AH, Fukami H (2011) Cleaning up the “Bigmessidae”: molecular phylogeny of scleractinian corals from Faviidae, Merulinidae, Pectiniidae and Trachyphylliidae. *BMC Evol Biol* 11:37. doi:[10.1186/1471-2148-11-37](https://doi.org/10.1186/1471-2148-11-37)
- 1357 Huang D, Benzoni F, Arrigoni R et al (2014a) Towards a phylogenetic classification of reef corals: the Indo-Pacific genera *Merulina*, *Goniastrea* and *Scapophyllia* (Scleractinia, Merulinidae). *Zool Scr* 43:531–548. doi:[10.1111/zsc.12061](https://doi.org/10.1111/zsc.12061)
- 1358 Huang D, Benzoni F, Fukami H et al (2014b) Taxonomic classification of the reef coral families Merulinidae, Montastraeidae, and Diploastraeidae (Cnidaria: Anthozoa: Scleractinia). *Zool J Linn Soc* 171:277–355. doi:[10.1111/zoj.12140](https://doi.org/10.1111/zoj.12140)
- 1359 Hunter CL, Morden CW, Smith CM (1997) The utility of ITS sequences in assessing relationships among zooxanthellae and corals. *Proc 8th Int Coral Reef Symp* 2:1599–1602
- 1360 Isomura N, Iwao K, Fukami H (2013) Possible natural hybridization of two morphologically distinct species of *Acropora* (Cnidaria, Scleractinia) in the Pacific: fertilization and larval survival rates. *PLoS One* 8:e56701. doi:[10.1371/journal.pone.0056701](https://doi.org/10.1371/journal.pone.0056701)
- 1361 Janiszewska K, Stolarski J, Benzerara K et al (2011) A unique skeletal microstructure of the deep-sea micrabaciid scleractinian corals. *J Morphol* 272:191–203. doi:[10.1002/jmor.10906](https://doi.org/10.1002/jmor.10906)
- 1362 Janiszewska K, Jaroszewicz J, Stolarski J (2013) Skeletal ontogeny in basal scleractinian micrabaciid corals. *J Morphol* 274:243–257. doi:[10.1002/jmor.20085](https://doi.org/10.1002/jmor.20085)
- 1363 Janiszewska K, Stolarski J, Kitahara MV et al (2015) Microstructural disparity between basal micrabaciids and other Scleractinia: new evidence from Neogene *Stephanophyllia*. *Lethaia*. doi:[10.1111/let.12119](https://doi.org/10.1111/let.12119)
- 1364 Johnson KG (1998) A phylogenetic test of accelerated turnover in Neogene Caribbean brain corals (Scleractinia: Faviidae). *Palaeontology* 41:1247–1268
- 1365 Kayal E, Roure B, Philippe H et al (2013) Cnidarian phylogenetic relationships as revealed by mitogenomics. *BMC Evol Biol* 13:5. doi:[10.1186/1471-2148-13-5](https://doi.org/10.1186/1471-2148-13-5)
- 1366 Keshavmurthy S, Yang S-Y, Alamaru A et al (2013) DNA barcoding reveals the coral “laboratory-rat”, *Stylophora pistillata* encompasses multiple identities. *Sci Rep* 3:1520. doi:[10.1038/srep01520](https://doi.org/10.1038/srep01520)
- 1367 Kitahara MV, Cairns SD, Miller DJ (2010a) Monophyletic origin of *Caryophyllia* (Scleractinia, Caryophylliidae), with descriptions of six new species. *Syst Biodivers* 8:91–118. doi:[10.1080/14772000903571088](https://doi.org/10.1080/14772000903571088)
- 1368 Kitahara MV, Cairns SD, Stolarski J et al (2010b) A comprehensive phylogenetic analysis of the Scleractinia (Cnidaria, Anthozoa) based on mitochondrial COI sequence data. *PLoS One* 5:e11490. doi:[10.1371/journal.pone.0011490](https://doi.org/10.1371/journal.pone.0011490)
- 1369 Kitahara MV, Stolarski J, Cairns SD et al (2012) The first modern solitary Agariciidae (Anthozoa, Scleractinia) revealed by molecular and microstructural analysis. *Invertebr Syst* 26:303–315. doi:[10.1071/IS11053](https://doi.org/10.1071/IS11053)
- 1370 Kitahara MV, Cairns SD, Stolarski J, Miller DJ (2013) Deltocyathiidae, an early-diverging family of Robust corals (Anthozoa, Scleractinia). *Zool Scr* 42:201–212. doi:[10.1111/j.1463-6409.2012.00575.x](https://doi.org/10.1111/j.1463-6409.2012.00575.x)
- 1371 Kitahara MV, Lin M-F, Forêt S et al (2014) The “naked coral” hypothesis revisited – evidence for and against scleractinian monophyly. *PLoS One* 9:e94774. doi:[10.1371/journal.pone.0094774](https://doi.org/10.1371/journal.pone.0094774)
- 1372 Kitano YF, Obuchi M, Uyeno D et al (2013) Phylogenetic and taxonomic status of the coral *Goniopora stokesi* and related species (Scleractinia: Poritidae) in Japan based on molecular and morphological data. *Zool Stud* 52:25. doi:[10.1186/1810-522X-52-25](https://doi.org/10.1186/1810-522X-52-25)
- 1373 Kitano YF, Benzoni F, Arrigoni R et al (2014) A phylogeny of the family Poritidae (Cnidaria, Scleractinia) based on molecular and morphological analyses. *PLoS One* 9:e98406. doi:[10.1371/journal.pone.0098406](https://doi.org/10.1371/journal.pone.0098406)
- 1374 Knittweis L, Kraemer WE, Timm J, Kochzius M (2009) Genetic structure of *Heliopungia actiniformis* (Scleractinia: Fungiidae) populations in the Indo-Malay Archipelago: implications for live coral trade management efforts. *Conserv Genet* 10:241–249. doi:[10.1007/s10592-008-9566-5](https://doi.org/10.1007/s10592-008-9566-5)
- 1375 Knowlton N, Budd AF (2001) Recognizing coral species past and present. In: Jackson JBC, Lidgard S, McKinney FK (eds) *Evolutionary patterns: growth, form, and tempo in the fossil record*. University of Chicago Press, Chicago, pp 97–119
- 1376 Knowlton N, Weil E, Weigt LA, Guzman HM (1992) Sibling species in *Montastraea annularis*, coral bleaching, and the coral climate record. *Science* 255:330–333
- 1377 Knowlton N, Mate JL, Guzman HM et al (1997) Direct evidence for reproductive isolation among the three species of the *Montastraea annularis* complex in central America (Panama and Honduras). *Mar Biol* 127:705–711. doi:[10.1007/s002270050061](https://doi.org/10.1007/s002270050061)
- 1378 Ladner JT, Palumbi SR (2012) Extensive sympatry, cryptic diversity and introgression throughout the geographic distribution of two coral species complexes. *Mol Ecol* 21:2224–2238. doi:[10.1111/j.1365-294X.2012.05528.x](https://doi.org/10.1111/j.1365-294X.2012.05528.x)
- 1379 Lam KKY, Morton B (2003) Morphological and ITS1, 5.8S, and partial ITS2 ribosomal DNA sequence distinctions between two species of *Platygyra* (Cnidaria: Scleractinia) from Hong Kong. *Mar Biotechnol* 5:555–567
- 1380 Lamarck J-BP (1801) *Système des animaux sans vertèbres*. Lamarck et Deterville, Paris
- 1381 Lang JC (1984) Whatever works: the variable importance of skeletal and of non-skeletal characters in scleractinian taxonomy. *Palaeontogr Am* 54:18–44
- 1382 Le Goff MC, Rogers AD (2002) Characterization of 10 microsatellite loci for the deep-sea coral *Lophelia pertusa* (Linnaeus 1758). *Mol Ecol Notes* 2:164–166. doi:[10.1046/j.1471-8286.2002.00190.x](https://doi.org/10.1046/j.1471-8286.2002.00190.x)
- 1383 Le Goff-Vitry MC, Rogers AD, Baglow D (2004) A deep-sea slant on the molecular phylogeny of the Scleractinia. *Mol Phylogenet Evol* 30:167–177. doi:[10.1016/S1055-7903\(03\)00162-3](https://doi.org/10.1016/S1055-7903(03)00162-3)
- 1384 Lemmon AR, Emme SA, Lemmon EM (2012) Anchored hybrid enrichment for massively high-throughput phylogenomics. *Syst Biol* 61:727–744. doi:[10.1093/sysbio/sys049](https://doi.org/10.1093/sysbio/sys049)
- 1385 Levitan DR, Fukami H, Jara J et al (2004) Mechanisms of reproductive isolation among sympatric broadcast-spawning corals of the *Montastraea annularis* species complex. *Evolution* 58:308–323
- 1386 Levitan DR, Fogarty ND, Jara J et al (2011) Genetic, spatial, and temporal components of precise spawning synchrony in reef building corals of the *Montastraea annularis* species complex. *Evolution* 65:1254–1270. doi:[10.1111/j.1558-5646.2011.01235.x](https://doi.org/10.1111/j.1558-5646.2011.01235.x)
- 1387 Licuanan WY (2009) Guide to the common corals of the Bolinao-Anda reef complex, northwestern Philippines. U.P. Marine Science Institute, Diliman

- 1481 Lin M-F, Luzon KS, Licuanan WY et al (2011) Seventy-four universal
1482 primers for characterizing the complete mitochondrial genomes of
1483 scleractinian corals (Cnidaria; Anthozoa). *Zool Stud* 50:513–524
- 1484 Lin M-F, Kitahara MV, Luo H et al (2014) Mitochondrial genome rear-
1485 rangements in the Scleractinia/Corallimorpharia complex: implica-
1486 tions for coral phylogeny. *Genome Biol Evol* 6:1086–1095.
1487 doi:[10.1093/gbe/evu084](https://doi.org/10.1093/gbe/evu084)
- 1488 Linnaeus C (1758) *Systema naturae per regna tria naturae, secundum*
1489 *classes, ordines, genera, species, cum characteribus, differentiis,*
1490 *synonymis, locis.* Laurentii Salvii, Holmiæ
- 1491 Liu L (2008) BEST: Bayesian estimation of species trees under the
1492 coalescent model. *Bioinformatics* 24:2542–2543
- 1493 Liu L, Pearl DK (2007) Species trees from gene trees: reconstructing
1494 Bayesian posterior distributions of a species phylogeny using esti-
1495 mated gene tree distributions. *Syst Biol* 56:504–514
- 1496 Liu L, Pearl DK, Brumfield RT, Edwards SV (2008) Estimating species
1497 trees using multiple-allele DNA sequence data. *Evolution*
1498 62:2080–2091
- 1499 Lopez JV, Knowlton N (1997) Discrimination of species in the
1500 *Montastraea annularis* complex using multiple genetic loci. *Proc*
1501 *8th Int Coral Reef Symp* 2:1613–1618
- 1502 Lopez JV, Kersanach R, Rehner SA, Knowlton N (1999) Molecular
1503 determination of species boundaries in corals: genetic analysis of
1504 the *Montastraea annularis* complex using amplified fragment
1505 length polymorphisms and a microsatellite marker. *Biol Bull*
1506 196:80–93
- 1507 Lowenstam HA, Weiner S (1989) *On biomineralization.* Oxford
1508 University Press, New York
- 1509 Lowenstein JM (1985) Molecular approaches to the identification of
1510 species. *Am Sci* 73:541–547
- 1511 Loya Y, Sakai K, Heyward A (2009) Reproductive patterns of fungiid
1512 corals in Okinawa, Japan. *Galaxea* 11:119–129
- 1513 Luck DG, Forsman ZH, Toonen RJ et al (2013) Polyphyly and hidden
1514 species among Hawaii's dominant mesophotic coral genera,
1515 *Leptoseris* and *Pavona* (Scleractinia: Agariciidae). *Peer J* 1:e132.
1516 doi:[10.7717/peerj.132](https://doi.org/10.7717/peerj.132)
- 1517 Maddison WP, Knowles LL (2006) Inferring phylogeny despite incom-
1518 plete lineage sorting. *Syst Biol* 55:21–30
- 1519 Magalon H, Samadi S, Richard M et al (2004) Development of coral
1520 and zooxanthella-specific microsatellites in three species of
1521 *Pocillopora* (Cnidaria, Scleractinia) from French Polynesia. *Mol*
1522 *Ecol Notes* 4:206–208
- 1523 Maier E, Tollrian R, Nürnberger B (2001) Development of species-
1524 specific markers in an organism with endosymbionts: microsatel-
1525 lites in the scleractinian coral *Seriatopora hystrix*. *Mol Ecol Notes*
1526 1:157–159. doi:[10.1046/j.1471-8278.2001.00058.x](https://doi.org/10.1046/j.1471-8278.2001.00058.x)
- 1527 Mangubhai S, Souter P, Grahn M (2007) Phenotypic variation in the
1528 coral *Platygyra daedalea* in Kenya: morphometry and genetics. *Mar*
1529 *Ecol Prog Ser* 345:105–115
- 1530 Manica A, Carter RW (2000) Morphological and fluorescence analysis
1531 of the *Montastraea annularis* species complex in Florida. *Mar Biol*
1532 137:899–906
- 1533 Marcelino LA, Westneat MW, Stoyneva V et al (2013) Modulation of
1534 light-enhancement to symbiotic algae by light-scattering in corals
1535 and evolutionary trends in bleaching. *PLoS One* 8:e61492.
1536 doi:[10.1371/journal.pone.0061492](https://doi.org/10.1371/journal.pone.0061492)
- 1537 Márquez LM, van Oppen MJH, Willis BL et al (2002) The highly cross-
1538 fertile coral species, *Acropora hyacinthus* and *Acropora cytherea*, con-
1539 stitute statistically distinguishable lineages. *Mol Ecol* 11:1339–1349
- 1540 Márquez LM, Miller DJ, MacKenzie JB, van Oppen MJH (2003)
1541 Pseudogenes contribute to the extreme diversity of nuclear ribo-
1542 somal DNA in the hard coral *Acropora*. *Mol Biol Evol* 20:1077–
1543 1086. doi:[10.1093/molbev/msg122](https://doi.org/10.1093/molbev/msg122)
- 1544 Marti-Puig P, Forsman ZH, Haverkort-Yeh RD et al (2014) Extreme
1545 phenotypic polymorphism in the coral genus *Pocillopora*; micro-
1546 morphology corresponds to mitochondrial groups, while colony
morphology does not. *Bull Mar Sci* 90:211–231. doi:[10.5343/bms.2012.1080](https://doi.org/10.5343/bms.2012.1080)
- McCormack JE, Hird SM, Zellmer AJ et al (2013) Applications of next-
generation sequencing to phylogeography and phylogenetics. *Mol*
Phylogenet Evol 66:526–538. doi:[10.1016/j.ympev.2011.12.007](https://doi.org/10.1016/j.ympev.2011.12.007)
- McMillan J, Miller DJ (1988) Restriction analysis and DNA hybridiza-
tion applied to the resolution of *Acropora nobilis* from *Acropora*
formosa. *Proc 6th Int Coral Reef Symp* 2:775–777
- McMillan J, Miller DJ (1989) Nucleotide sequences of highly repetitive
DNA from scleractinian corals. *Gene* 83:185–186.
doi:[10.1016/0378-1119\(89\)90418-6](https://doi.org/10.1016/0378-1119(89)90418-6)
- McMillan J, Mahony T, Veron JEN, Miller DJ (1991) Nucleotide
sequencing of highly repetitive DNA from seven species in the coral
genus *Acropora* (Cnidaria: Scleractinia) implies a division contrary
to morphological criteria. *Mar Biol* 110:323–327. doi:[10.1007/BF01344350](https://doi.org/10.1007/BF01344350)
- Medina M, Weil E, Szmant AM (1999) Examination of the *Montastraea*
annularis species complex (Cnidaria: Scleractinia) using ITS and
COI sequences. *Mar Biotechnol* 1:89–97
- Medina M, Collins AG, Takaoka TL et al (2006) Naked corals: skeleton
loss in Scleractinia. *Proc Natl Acad Sci U S A* 103:9096–9100
- Miller KJ, Babcock RC (1997) Conflicting morphological and repro-
ductive species boundaries in the coral genus *Platygyra*. *Biol Bull*
192:98–110
- Miller KJ, Benzie JAH (1997) No clear genetic distinction between
morphological species within the coral genus *Platygyra*. *Bull Mar*
Sci 61:907–917
- Miller KJ, Howard CG (2004) Isolation of microsatellites from two
species of scleractinian coral. *Mol Ecol Notes* 4:11–13.
doi:[10.1046/j.1471-8286.2003.00555.x](https://doi.org/10.1046/j.1471-8286.2003.00555.x)
- Milne Edwards H, Haime J (1848a) Recherches sur les polypiers.
Deuxième mémoire. Monographie des Turbinolides. *Ann Sci Nat*,
3e Sér 9:211–344
- Milne Edwards H, Haime J (1848b) Recherches sur les polypiers.
Premier mémoire. Observations sur la structure et le developpement
des polypiers en général. *Ann Sci Nat*, 3e Sér 9:37–89
- Milne Edwards H, Haime J (1848c) Recherches sur les polypiers.
Quatrième mémoire. Monographie des Astréides. *Ann Sci Nat*, 3e
Sér 10:209–320
- Milne Edwards H, Haime J (1848d) Recherches sur les polypiers.
Troisième mémoire. Monographie des Eupsammidae. *Ann Sci Nat*,
3e Sér 10:65–114
- Milne Edwards H, Haime J (1848e) Note sur la classification de la
deuxième tribu de la famille des Astréides. *C R Séances Acad Sci*
27:490–497
- Milne Edwards H, Haime J (1850) Recherches sur les polypiers.
Cinquième mémoire. Monographie des Oculinides. *Ann Sci Nat*, 3e
Sér 13:63–110
- Milne Edwards H, Haime J (1851a) Recherches sur les polypiers.
Septième mémoire. Monographie des Poritides. *Ann Sci Nat*, 3e Sér
16:21–70
- Milne Edwards H, Haime J (1851b) Recherches sur les polypiers.
Sixième mémoire. Monographie des Fongides. *Ann Sci Nat*, 3e Sér
15:73–144
- Milne Edwards H, Haime J (1857) Histoire naturelle des coralliaires, ou
polyptes proprement dits. Tome second. Zoanthaires sclérodermes
(Zoantharia Sclerodermata) ou madréporaires. Roret, Paris
- Odorico DM, Miller DJ (1997) Variation in the ribosomal internal tran-
scribed spacers and 5.8S rDNA among five species of *Acropora*
(Cnidaria; Scleractinia): patterns of variation consistent with reticu-
late evolution. *Mol Biol Evol* 14:465–473
- Okubo N, Mezaki T, Nozawa Y et al (2013) Comparative embryology
of eleven species of stony corals (Scleractinia). *PLoS One* 8:e84115.
doi:[10.1371/journal.pone.0084115](https://doi.org/10.1371/journal.pone.0084115)
- Pallas PS (1766) *Elenchus Zoophytorum Sistens Generum*
Adumbrationes Generaliores et Specierum Cognitarum Succintas

- 1613 Descriptiones, cum Selectis Auctorum Synonymis. Apud
1614 Franciscum Varrentrapp, Hagæ Comitum
- 1615 Palumbi SR, Vollmer SV, Romano SL et al (2012) The role of genes in
1616 understanding the evolutionary ecology of reef building corals. *Evol*
1617 *Ecol* 26:317–335. doi:10.1007/s10682-011-9517-3
- 1618 Pandolfi JM (1992) Successive isolation rather than evolutionary centres
1619 for the origination of Indo-Pacific reef corals. *J Biogeogr*
1620 19:593–609. doi:10.2307/2845703
- 1621 Philippe H, Telford MJ (2006) Large-scale sequencing and the new animal
1622 phylogeny. *Trends Ecol Evol* 21:614–620. doi:10.1016/j.
1623 *tree*.2006.08.004
- 1624 Philippe H, Derelle R, Lopez P et al (2009) Phylogenomics revives traditional
1625 views on deep animal relationships. *Curr Biol* 19:706–712.
1626 doi:10.1016/j.cub.2009.02.052
- 1627 Pinzón JH, LaJeunesse TC (2010) Species delimitation of common reef
1628 corals in the genus *Pocillopora* using nucleotide sequence phylogenies,
1629 population genetics and symbiosis ecology. *Mol Ecol*
1630 20:311–325. doi:10.1111/j.1365-294X.2010.04939.x
- 1631 Pinzón JH, Reyes Bonilla H, Baums IB, LaJeunesse TC (2012)
1632 Contrasting clonal structure among *Pocillopora* (Scleractinia) communities
1633 at two environmentally distinct sites in the Gulf of California. *Coral Reefs*
1634 31:765–777. doi:10.1007/s00338-012-0887-y
- 1635 Pinzón JH, Sampayo E, Cox E et al (2013) Blind to morphology: genetics
1636 identifies several widespread ecologically common species and
1637 few endemics among Indo-Pacific cauliflower corals (*Pocillopora*,
1638 Scleractinia). *J Biogeogr* 40:1595–1608. doi:10.1111/jbi.12110
- 1639 Pochon X, Forsman ZH, Spalding HL et al (2015) Depth specialization
1640 in mesophotic corals (*Leptoseris* spp.) and associated algal symbionts
1641 in Hawai'i. *R Soc Open Sci* 2:140351. doi:10.1073/
1642 *pnas*.0700466104
- 1643 Posada D, Crandall KA (2001) Selecting the best-fit model of nucleotide
1644 substitution. *Syst Biol* 50:580–601. doi:10.1080/
1645 *10635150118469*
- 1646 Prada C, DeBiasse MB, Neigel JE et al (2014) Genetic species delineation
1647 among branching Caribbean *Porites* corals. *Coral Reefs*
1648 33:1019–1030. doi:10.1007/s00338-014-1179-5
- 1649 Regier JC, Shultz JW, Zwick A et al (2010) Arthropod relationships revealed
1650 by phylogenomic analysis of nuclear protein-coding sequences. *Nature*
1651 463:1079–1083. doi:10.1038/nature08742
- 1652 Richards ZT, van Oppen MJH, Wallace CC et al (2008) Some rare Indo-Pacific
1653 coral species are probably hybrids. *PLoS One* 3:e3240.
1654 doi:10.1371/journal.pone.0003240
- 1655 Richards ZT, Miller DJ, Wallace CC (2013) Molecular phylogenetics of
1656 geographically restricted *Acropora* species: implications for threatened
1657 species conservation. *Mol Phylogenet Evol* 69:837–851.
1658 doi:10.1016/j.ympev.2013.06.020
- 1659 Ridgway T (2005) Allozyme electrophoresis still represents a powerful
1660 technique in the management of coral reefs. *Biodivers Conserv*
1661 14:135–149. doi:10.1007/s10531-005-4054-4
- 1662 Rodriguez-Lanetty M, Hoegh-Guldberg O (2002) The phylogeography and
1663 connectivity of the latitudinally widespread scleractinian coral
1664 *Plesiastraea versipora* in the western Pacific. *Mol Ecol*
1665 11:1177–1189
- 1666 Romano SL, Cairns SD (2000) Molecular phylogenetic hypotheses for the
1667 evolution of scleractinian corals. *Bull Mar Sci* 67:1043–1068
- 1668 Romano SL, Palumbi SR (1996) Evolution of scleractinian corals inferred
1669 from molecular systematics. *Science* 271:640–642.
1670 doi:10.1126/science.271.5249.640
- 1671 Romano SL, Palumbi SR (1997) Molecular evolution of a portion of the
1672 mitochondrial 16S ribosomal gene region in scleractinian corals. *J Mol Evol*
1673 45:397–411. doi:10.1007/PL00006245
- 1674 Romano SL, Richmond RH (2000) PCR-generated DNA fragment markers
1675 for assessing genetic variation within scleractinian coral species. *Proc 9th Int Coral Reef Symp*
1676 1:125–130
- 1677 Roniewicz E (1989) Triassic scleractinian corals of the Zlambach Beds,
1678 northern Calcareous Alps, Austria. *Denk Österr Akad Wiss Math Naturw Klasse*
1679 126:1–152
- 1680 Roniewicz E, Morycowa E (1993) Evolution of the Scleractinia in the
1681 light of microstructural data. *Cour Forsch Inst Senckenberg*
1682 164:233–240
- 1683 Roniewicz E, Stanley GD Jr (1998) Middle Triassic cnidarians from the
1684 New Pass Range, central Nevada. *J Paleontol* 72:246–256
- 1685 Roniewicz E, Stolarski J (1999) Evolutionary trends in the epithecate
1686 scleractinian corals. *Acta Palaeontol Pol* 44:131–166
- 1687 Roniewicz E, Stolarski J (2001) Triassic roots of the amphistraeid
1688 scleractinian corals. *J Paleontol* 75:34–45. doi:10.1666/0022-
1689 *3360(2001)075<0034:TROTAS>2.0.CO;2*
- 1690 Ronquist F, Huelsenbeck JP (2003) MrBayes 3: Bayesian phylogenetic
1691 inference under mixed models. *Bioinformatics* 19:1572–1574
- 1692 Rubin BER, Ree RH, Moreau CS (2012) Inferring phylogenies from
1693 RAD sequence data. *PLoS One* 7:e33394. doi:10.1371/journal.
1694 *pone.0033394*
- 1695 Schmidt-Roach S, Lundgren P, Miller KJ et al (2013) Assessing hidden
1696 species diversity in the coral *Pocillopora damicornis* from eastern
1697 Australia. *Coral Reefs* 32:161–172. doi:10.1007/
1698 *s00338-012-0959-z*
- 1699 Schmidt-Roach S, Miller KJ, Lundgren P, Andreakis N (2014) With
1700 eyes wide open: a revision of species within and closely related to
1701 the *Pocillopora damicornis* species complex (Scleractinia;
1702 Pocilloporidae) using morphology and genetics. *Zool J Linn Soc*
1703 170:1–33. doi:10.1111/zoj.12092
- 1704 Schwartz SA, Budd AF, Carlson DB (2012) Molecules and fossils reveal
1705 punctuated diversification in Caribbean “faviid” corals. *BMC Evol*
1706 *Biol* 12:123. doi:10.1186/1471-2148-12-123
- 1707 Scrutton CT (1993) A new kilbuchophyllid coral from the Ordovician
1708 of the southern uplands, Scotland. *Cour Forsch Inst Senckenberg*
1709 164:153–158
- 1710 Scrutton CT, Clarkson ENK (1991) A new scleractinian-like coral from
1711 the Ordovician of the southern uplands, Scotland. *Palaeontology*
1712 34:179–194
- 1713 Serrano X, Baums IB, O'Reilly K et al (2014) Geographic differences
1714 in vertical connectivity in the Caribbean coral *Montastraea cavernosa*
1715 despite high levels of horizontal connectivity at shallow
1716 depths. *Mol Ecol* 23:4226–4240. doi:10.1111/mec.12861
- 1717 Severance EG, Szmant AM, Karl SA (2004a) Microsatellite loci isolated
1718 from the Caribbean coral, *Montastraea annularis*. *Mol Ecol*
1719 *Notes* 4:74–76
- 1720 Severance EG, Szmant AM, Karl SA (2004b) Single-copy gene markers
1721 isolated from the Caribbean coral, *Montastraea annularis*. *Mol*
1722 *Ecol Notes* 4:167–169
- 1723 Shearer TL, Coffroth MA (2004) Isolation of microsatellite loci from
1724 the scleractinian corals, *Montastraea cavernosa* and *Porites astreoides*.
1725 *Mol Ecol Notes* 4:435–437. doi:10.1111/j.1471-8286.2004.00653.x
- 1726 Shearer TL, van Oppen MJH, Romano SL, Wörheide G (2002) Slow
1727 mitochondrial DNA sequence evolution in the Anthozoa (Cnidaria).
1728 *Mol Ecol* 11:2475–2487
- 1729 Shinzato C, Shoguchi E, Kawashima T et al (2011) Using the *Acropora*
1730 *digitifera* genome to understand coral responses to environmental
1731 change. *Nature* 476:320–323. doi:10.1038/nature10249
- 1732 Smith C, Chen CA, Yang H-P, Miller DJ (1997) A PCR-based method
1733 for assaying molecular variation in corals based on RFLP analysis
1734 of the ribosomal intergenic spacer region. *Mol Ecol* 6:683–685.
1735 doi:10.1046/j.1365-294X.1997.00226.x
- 1736 Stamatakis A (2006) RAxML-VI-HPC: maximum likelihood-based
1737 phylogenetic analyses with thousands of taxa and mixed models.
1738 *Bioinformatics* 22:2688–2690. doi:10.1093/bioinformatics/btl446
- 1739 Stanley GD Jr (2003) The evolution of modern corals and their early
1740 history. *Earth Sci Rev* 60:195–225
- 1741 1742

- 1743 Stefani F, Benzoni F, Pichon M et al (2008a) A multidisciplinary
1744 approach to the definition of species boundaries in branching spe-
1745 cies of the coral genus *Psammodora* (Cnidaria, Scleractinia). *Zool*
1746 *Scr* 37:71–91. doi:10.1111/j.1463-6409.2007.00309.x
- 1747 Stefani F, Benzoni F, Pichon M et al (2008b) Genetic and morphometric
1748 evidence for unresolved species boundaries in the coral genus
1749 *Psammodora* (Cnidaria; Scleractinia). *Hydrobiologia* 596:153–172.
1750 doi:10.1007/s10750-007-9092-3
- 1751 Stefani F, Benzoni F, Yang S-Y et al (2011) Comparison of morphologi-
1752 cal and genetic analyses reveals cryptic divergence and morphologi-
1753 cal plasticity in *Stylophora* (Cnidaria, Scleractinia). *Coral Reefs*
1754 30:1033–1049. doi:10.1007/s00338-011-0797-4
- 1755 Stobart B, Benzie JAH (1994) Allozyme electrophoresis demonstrates
1756 that the scleractinian coral *Montipora digitata* is two species. *Mar*
1757 *Biol* 118:183–190. doi:10.1007/BF00349784
- 1758 Stoddart JA (1983) Asexual production of planulae in the coral
1759 *Pocillopora damicornis*. *Mar Biol* 76:279–284. doi:10.1007/
1760 [BF00393029](https://doi.org/10.1007/BF00393029)
- 1761 Stoddart JA (1984) Genetical structure within populations of the coral
1762 *Pocillopora damicornis*. *Mar Biol* 81:19–30. doi:10.1007/BF00397621
- 1763 Stolarski J, Roniewicz E (2001) Towards a new synthesis of evolution-
1764 ary relationships and classification of Scleractinia. *J Paleontol*
1765 75:1090–1108
- 1766 Stolarski J, Kitahara MV, Miller DJ et al (2011) The ancient evolution-
1767 ary origins of Scleractinia revealed by azooxanthellate corals. *BMC*
1768 *Evol Biol* 11:316. doi:10.1186/1471-2148-11-316
- 1769 Suzuki G, Fukami H (2012) Evidence of genetic and reproductive isola-
1770 tion between two morphs of subtropical-dominant coral *Acropora*
1771 *solitaryensis* in the non-reef region of Japan. *Zool Sci* 29:134–140.
1772 doi:10.2108/zsj.29.134
- 1773 Suzuki G, Nomura K (2013) Species boundaries of *Astreopora* corals
1774 (Scleractinia, Acroporidae) inferred by mitochondrial and nuclear
1775 molecular markers. *Zool Sci* 30:626–632. doi:10.2108/zsj.30.626
- 1776 Szmant AM, Weil E, Miller MW, Colon DE (1997) Hybridization
1777 within the species complex of the scleractinian coral *Montastraea*
1778 *annularis*. *Mar Biol* 129:561–572
- 1779 Takabayashi M, Carter DA, Loh WKW, Hoegh-Guldberg O (1998a) A
1780 coral-specific primer for PCR amplification of the internal tran-
1781 scribed spacer region in ribosomal DNA. *Mol Ecol* 7:928–930
- 1782 Takabayashi M, Carter DA, Ward S, Hoegh-Guldberg O (1998b) Inter-
1783 and intra-specific variability in ribosomal DNA sequence in the
1784 internal transcribed spacer region of corals. In: Proceedings of the
1785 Australian Coral Reef Society 75th anniversary conference, Heron
1786 Island, Oct 1997. School of Marine Science, University of
1787 Queensland, Brisbane, pp 241–248
- 1788 Takabayashi M, Carter DA, Lopez JV, Hoegh-Guldberg O (2003)
1789 Genetic variation of the scleractinian coral *Stylophora pistillata*,
1790 from western Pacific reefs. *Coral Reefs* 22:17–22
- 1791 Tay YC, Noreen AME, Suharsono et al (2015) Genetic connectivity of
1792 the broadcast spawning reef coral *Platygyra sinensis* on impacted
1793 reefs, and the description of new microsatellite markers. *Coral*
1794 *Reefs* 34:301–311. doi:10.1007/s00338-014-1206-6
- 1795 Todd PA (2008) Morphological plasticity in scleractinian corals. *Biol*
1796 *Rev* 83:315–337. doi:10.1111/j.1469-185X.2008.00045.x
- 1797 Torda G, Lundgren P, Willis BL, van Oppen MJH (2013a) Revisiting
1798 the connectivity puzzle of the common coral *Pocillopora damicornis*.
1799 *Mol Ecol* 22:5805–5820. doi:10.1111/mec.12540
- 1800 Torda G, Lundgren P, Willis BL, van Oppen MJH (2013b) Genetic
1801 assignment of recruits reveals short and long distance larval disper-
1802 sal in *Pocillopora damicornis* on the Great Barrier Reef. *Mol Ecol*
1803 22:5821–5834. doi:10.1111/mec.12539
- 1804 Torda G, Schmidt-Roach S, Peplow LM et al (2013c) A rapid genetic
1805 assay for the identification of the most common *Pocillopora dami-*
cornis genetic lineages on the Great Barrier Reef. *PLoS One* 8:e58447. doi:10.1371/journal.pone.0058447
- 1806 Tsang LM, Chu KH, Nozawa Y, Chan BKK (2014) Morphological and
1807 host specificity evolution in coral symbiont barnacles
1808 (Balanomorpha: Pyrgomatidae) inferred from a multi-locus phylog-
1809 eny. *Mol Phylogenet Evol* 77:11–22. doi:10.1016/j.
1810 [ympev.2014.03.002](https://doi.org/10.1016/j.ympev.2014.03.002)
- 1811 Tseng C-C, Wallace CC, Chen CA (2005) Mitogenomic analysis of
1812 *Montipora cactus* and *Anacropora matthai* (cnidaria; scleractinia;
1813 acroporidae) indicates an unequal rate of mitochondrial evolution
1814 among Acroporidae corals. *Coral Reefs* 24:502–508. doi:10.1007/
1815 [s00338-005-0499-x](https://doi.org/10.1007/s00338-005-0499-x)
- 1816 van Oppen MJH, Willis BL, Miller DJ (1999) Atypically low rate of
1817 cytochrome b evolution in the scleractinian coral genus *Acropora*.
1818 *Proc R Soc Lond B Biol Sci* 266:179–183
- 1819 van Oppen MJH, Willis BL, van Vugt HWJA, Miller DJ (2000)
1820 Examination of species boundaries in the *Acropora cervicornis*
1821 group (Scleractinia, Cnidaria) using nuclear DNA sequence analy-
1822 ses. *Mol Ecol* 9:1363–1373
- 1823 van Oppen MJH, McDonald BJ, Willis BL, Miller DJ (2001) The evolu-
1824 tionary history of the coral genus *Acropora* (Scleractinia,
1825 Cnidaria) based on a mitochondrial and a nuclear marker: reticula-
1826 tion, incomplete lineage sorting, or morphological convergence?
1827 *Mol Biol Evol* 18:1315–1329
- 1828 van Oppen MJH, Willis BL, Van Rheede T, Miller DJ (2002) Spawning
1829 times, reproductive compatibilities and genetic structuring in the
1830 *Acropora aspera* group: evidence for natural hybridization and
1831 semi-permeable species boundaries in corals. *Mol Ecol*
1832 11:1363–1376
- 1833 van Oppen MJH, Koolmees EM, Veron JEN (2004) Patterns of evolu-
1834 tion in the scleractinian coral genus *Montipora* (Acroporidae). *Mar*
1835 *Biol* 144:9–18. doi:10.1007/s00227-003-1188-3
- 1836 van Veghel MLJ (1994) Reproductive characteristics of the polymor-
1837 phic Caribbean reef building coral *Montastrea annularis*.
1838 I. Gametogenesis and spawning behavior. *Mar Ecol Prog Ser*
1839 109:209–219
- 1840 van Veghel MLJ, Bak RPM (1993) Intraspecific variation of a dominant
1841 Caribbean reef building coral, *Montastrea annularis*: genetic,
1842 behavioral, and morphometric aspects. *Mar Ecol Prog Ser*
1843 92:255–265
- 1844 van Veghel MLJ, Bak RPM (1994) Reproductive characteristics of the
1845 polymorphic Caribbean reef building coral *Montastrea annularis*.
1846 III. Reproduction in damaged and regenerating colonies. *Mar Ecol*
1847 *Prog Ser* 109:229–233
- 1848 van Veghel MLJ, Bosscher H (1995) Variation in linear growth and
1849 skeletal density within the polymorphic reef building coral
1850 *Montastrea annularis*. *Bull Mar Sci* 56:902–908
- 1851 van Veghel MLJ, Kahmann MEH (1994) Reproductive characteristics
1852 of the polymorphic Caribbean reef building coral *Montastrea annu-*
1853 *laris*. II. Fecundity and colony structure. *Mar Ecol Prog Ser*
1854 109:221–227
- 1855 van Veghel MLJ, Cleary DFR, Bak RPM (1996) Interspecific interac-
1856 tions and competitive ability of the polymorphic reef-building coral
1857 *Montastrea annularis*. *Bull Mar Sci* 58:792–803
- 1858 Vaughan TW, Wells JW (1943) Revision of the suborders, families, and
1859 genera of the Scleractinia. *Geol Soc Am Spec Pap* 44:1–345
- 1860 Veron JEN (1986) Corals of Australia and the Indo-Pacific. Angus and
1861 Robertson, Sydney
- 1862 Veron JEN (1995) Corals in space and time. UNSW Press, Sydney
- 1863 Veron JEN (2000) Corals of the world. Australian Institute of Marine
1864 Science, Townsville
- 1865 Veron JEN (2013) Overview of the taxonomy of zooxanthellate
1866 Scleractinia. *Zool J Linn Soc* 169:485–508. doi:10.1111/zoj.12076

- 1869 Veron JEN, Wallace CC (1984) Scleractinia of eastern Australia. Part
1870 V. Family Acroporidae. Australian Institute of Marine Science,
1871 Townsville
- 1872 Veron JEN, Odorico DM, Chen CA, Miller DJ (1996) Reassessing evo-
1873 lutionary relationships of scleractinian corals. *Coral Reefs* 15:1–9.
1874 doi:[10.1007/BF01626073](https://doi.org/10.1007/BF01626073)
- 1875 Vollmer SV, Palumbi SR (2002) Hybridization and the evolution of reef
1876 coral diversity. *Science* 296:2023–2025
- 1877 Vollmer SV, Palumbi SR (2004) Testing the utility of internally tran-
1878 scribed spacer sequences in coral phylogenetics. *Mol Ecol*
1879 13:2763–2772
- 1880 Wallace CC (1999) Staghorn corals of the world: a revision of the coral
1881 genus *Acropora*. CSIRO Publishing, Collingwood
- 1882 Wallace CC (2012) Acroporidae of the Caribbean. *Geol Belg*
1883 15:388–393
- 1884 Wallace CC, Chen CA, Fukami H, Muir PR (2007) Recognition of
1885 separate genera within *Acropora* based on new morphological,
1886 reproductive and genetic evidence from *Acropora togianensis*, and
1887 elevation of the subgenus *Isopora* Studer, 1878 to genus
1888 (Scleractinia: Astrocoeniidae; Acroporidae). *Coral Reefs* 26:231–
1889 239. doi:[10.1007/s00338-007-0203-4](https://doi.org/10.1007/s00338-007-0203-4)
- 1890 Wallace CC, Done BJ, Muir PR (2012) Revision and catalogue of
1891 worldwide staghorn corals *Acropora* and *Isopora* (Scleractinia:
1892 Acroporidae) in the Museum of Tropical Queensland. *Mem*
1893 *Queensland Mus* 57:1–255
- 1894 Wang W, Omori M, Hayashibara T et al (1995) Isolation and character-
1895 ization of a mini-collagen gene encoding a nematocyst capsule pro-
1896 tein from a reef-building coral, *Acropora donei*. *Gene* 152:195–200.
1897 doi:[10.1016/0378-1119\(95\)00644-L](https://doi.org/10.1016/0378-1119(95)00644-L)
- 1898 Wei NV, Wallace CC, Dai C-F et al (2006) Analyses of the ribosomal
1899 internal transcribed spacers (ITS) and the 5.8S gene indicate that
1900 extremely high rDNA heterogeneity is a unique feature in the scler-
1901 actinian coral genus *Acropora* (Scleractinia; Acroporidae). *Zool*
1902 *Stud* 45:404–418
- 1903 Wei NV, Hsieh HJ, Dai C-F et al (2012) Reproductive isolation among
1904 *Acropora* species (Scleractinia: Acroporidae) in a marginal coral
1905 assemblage. *Zool Stud* 51:85–92
- 1906 Weil E, Knowlton N (1994) A multi-character analysis of the Caribbean
1907 coral *Montastraea annularis* (Ellis and Solander, 1786) and its two
1908 sibling species, *M. faveolata* (Ellis and Solander, 1786) and *M.*
1909 *franki* (Gregory, 1895). *Bull Mar Sci* 55:151–175
- 1910 Wells JW (1956) Scleractinia. In: Moore RC (ed) *Treatise on inverte-*
1911 *brate paleontology. Part F: Coelenterata.* Geological Society of
1912 America and University of Kansas Press, Lawrence,
1913 pp F328–F444
- 1914 Wheeler QD (2004) Taxonomic triage and the poverty of phylogeny.
1915 *Philos Trans R Soc Lond B Biol Sci* 359:571–583
- 1916 White TJ, Bruns T, Lee S, Taylor WJ (1990) Amplification and direct
1917 sequencing of fungal ribosomal RNA genes for phylogenetics. In:
1918 Innis MA, Gelfand DH, Sninsky JJ, White TJ (eds) *PCR protocols:*
1919 *a guide to methods and applications.* Academic, San Diego,
1920 pp 315–322
- 1921 Willis BL, Ayre DJ (1985) Asexual reproduction and genetic determina-
1922 tion of growth form in the coral *Pavona cactus*: biochemical genetic
1923 and immunogenic evidence. *Oecologia* 65:516–525. doi:[10.1007/
1924 BF00379666](https://doi.org/10.1007/BF00379666)
- 1925 Willis BL, Babcock RC, Harrison PL, Wallace CC (1997) Experimental
1926 hybridization and breeding incompatibilities within the mating sys-
1927 tems of mass spawning reef corals. *Coral Reefs* 16:S53–S65
- 1928 Willis BL, van Oppen MJH, Miller DJ et al (2006) The role of hybrid-
1929 ization in the evolution of reef corals. *Annu Rev Ecol Evol Syst*
1930 37:489–517. doi:[10.1146/annurev.ecolsys.37.091305.110136](https://doi.org/10.1146/annurev.ecolsys.37.091305.110136)
- 1931 Wolstenholme JK (2004) Temporal reproductive isolation and gametic
1932 compatibility are evolutionary mechanisms in the *Acropora humilis*
1933 species group (Cnidaria; Scleractinia). *Mar Biol* 144:567–582
- 1934 Wolstenholme JK, Wallace CC, Chen CA (2003) Species boundaries
1935 within the *Acropora humilis* species group (Cnidaria; Scleractinia):
1936 a morphological and molecular interpretation of evolution. *Coral*
1937 *Reefs* 22:155–166. doi:[10.1007/s00338-003-0299-0](https://doi.org/10.1007/s00338-003-0299-0)
- 1938 Wood E (1983) *Reef corals of the world: biology and field guide.* TFH
1939 Publications, Hong Kong
- 1940 Work TM, Aeby GS (2014) Microbial aggregates within tissues infect a
1941 diversity of corals throughout the Indo-Pacific. *Mar Ecol Prog Ser*
1942 500:1–9. doi:[10.3354/meps10698](https://doi.org/10.3354/meps10698)
- 1943 Zilberberg C, Peluso L, Marques JA, Cunha H (2014) Polymorphic
1944 microsatellite loci for endemic *Mussismilia* corals (Anthozoa:
1945 Scleractinia) of the southwest Atlantic Ocean. *J Hered* 105:572–
1946 575. doi:[10.1093/jhered/esu023](https://doi.org/10.1093/jhered/esu023)