

Evidence of two spectral breaks in the prompt emission of gamma-ray bursts

M. E. Ravasio^{1,2}, G. Ghirlanda^{2,3,1}, L. Nava^{2,4,5}, and G. Ghisellini²

¹ Università degli Studi di Milano-Bicocca, Dipartimento di Fisica U2, Piazza della Scienza, 3, 20126 Milano, Italy
e-mail: m.ravasio5@campus.unimib.it

² INAF – Osservatorio Astronomico di Brera, via Bianchi 46, 23807 Merate, LC, Italy

³ INFN – Milano Bicocca, Piazza della Scienza 3, 20123 Milano, Italy

⁴ INAF – Osservatorio Astronomico di Trieste, via G.B. Tiepolo 11, 34143 Trieste, Italy

⁵ INFN, via Valerio 2, 34127 Trieste, Italy

Received 28 December 2018 / Accepted 4 March 2019

ABSTRACT

The long-lasting tension between the observed spectra of gamma-ray bursts (GRBs) and the predicted synchrotron emission spectrum might be solved if electrons do not completely cool. Evidence of incomplete cooling was recently found in *Swift* GRBs with prompt observations down to 0.1 keV, and in one bright *Fermi* burst, GRB 160625B. Here we systematically search for evidence of incomplete cooling in the spectra of the ten brightest short and long GRBs observed by *Fermi*. We find that in eight out of ten long GRBs there is compelling evidence of a low-energy break (below the peak energy) and good agreement with the photon indices of the synchrotron spectrum (respectively $-2/3$ and $-3/2$ below the break and between the break and the peak energy). Interestingly, none of the ten short GRBs analysed shows a break, but the low-energy spectral slope is consistent with $-2/3$. In a standard scenario, these results imply a very low magnetic field in the emission region ($B' \sim 10$ G in the comoving frame), at odd with expectations.

Key words. radiation mechanisms: non-thermal – gamma rays: general

1. Introduction

The nature of the mechanism responsible for the hard X-ray and γ -ray prompt emission in gamma-ray bursts (GRBs) has been for years the subject of an intense debate and is still uncertain. Synchrotron emission has been proposed as the most natural radiative process, due to the non-thermal appearance of the observed spectra and to the likely presence of accelerated electrons and intense magnetic fields (Rees & Meszaros 1994; Katz 1994; Tavani 1996; Sari et al. 1996, 1998). The debate is based on the inconsistency between the thousands of GRB spectra detected by different instruments and the spectral shape expected for synchrotron emission.

The observed GRB prompt spectrum is indeed typically satisfactorily fitted by a smoothly broken power-law function, with photon flux described by $N(E) \propto E^\alpha$ at low energies and by $N(E) \propto E^\beta$ at high energies. The transition is smooth and identifies a typical break energy, which is the peak energy, E_{peak} , in the νF_ν spectral representation. Typical values derived for long GRBs are $\alpha \sim -1$, $\beta \sim -2.5$, and $E_{\text{peak}} \sim 200$ keV. This has been confirmed by the analysis of large samples of GRBs detected by the Burst And Transient Source Experiment (BATSE, ~ 20 keV–2 MeV; Preece et al. 2000; Kaneko et al. 2006) and the Gamma Burst Monitor (GBM, ~ 8 keV–40 MeV, Nava et al. 2011; Goldstein et al. 2012; Gruber et al. 2014). Prompt emission spectra of short GRBs appear in general harder, not only in terms of peak energy ($E_{\text{peak}}^{\text{short}} \sim 0.5$ –1 MeV), but also in terms of photon index α . Ghirlanda et al. (2009) found that the low-energy spectral index of short bursts detected by BATSE has an average value $\alpha_{\text{short}} = -0.4 \pm 0.5$. These results were later confirmed, also by GBM data (Nava et al. 2011).

The values of the low-energy photon index inferred from the observed spectra are in contrast with the predictions from the synchrotron theory. In the case of efficient cooling of the non-thermal population of electrons (Sari et al. 1998; Ghisellini et al. 2000) the predicted photon index is $\alpha_2^{\text{syn}} = -3/2$, significantly softer than the observed value. A harder photon index ($\alpha_1^{\text{syn}} = -2/3$) is expected to describe the spectrum only at very low frequencies, below the cooling frequency. However, a small but sizable fraction of GRBs has been found to violate this limit (Preece et al. 1998), having photon index $\alpha > -2/3$. These inconsistencies have been the major arguments against the synchrotron process for many years.

A few theoretical models have been proposed to reconcile the observed GRB prompt spectra with the synchrotron process. Some of them invoke effects that produce a hardening of the low-energy spectral index, such as a decaying magnetic field (Pe'er & Zhang 2006; Uhm & Zhang 2014), inverse Compton scattering in the Klein–Nishina regime, or a marginally fast cooling regime (Derishev et al. 2001; Nakar et al. 2009; Daigne et al. 2011).

The advantages and difficulties of these and other models have been recently reviewed by Kumar & Zhang (2015). These theoretical efforts have tried to modify the models in order to reproduce a typical photon index of $\alpha = -1$. Only recently has the problem been tackled from the opposite side, through a revision of the way spectra can be modelled.

Zheng et al. 2012, analysing the X-ray and γ -ray emission of GRB 110205A, as detected by *Swift* and *Suzaku*, identified a low-energy break in the prompt spectrum whose shape agrees with the synchrotron model. A major advancement in the systematic characterisation of the low-energy part of prompt spectra

has been made in two recent studies by Oganessian et al. (2017, 2018). They considered a sample of 34 long GRBs with prompt emission detected simultaneously by the Burst and Alert Telescope (BAT; 15–150 keV) and by the X-Ray Telescope (XRT; 0.3–10 keV) on board the *Swift* satellite. The joint spectral analysis revealed the presence (in most of the spectra) of a spectral break at low energies, around ~ 2 –30 keV, in addition to the typical break corresponding to the peak energy. Remarkably, the two power-law photon indices α_1 and α_2 , describing the spectrum below and above the newly found break energy, have distributions centred around $-2/3$ and $-3/2$, respectively, consistent with the expectations of synchrotron theory. The same spectral shape was found in GRB 160625B (Ravasio et al. 2018), one of the brightest bursts detected by the *Fermi*/GBM. Both the time-integrated and time-resolved spectra of this burst are characterised by a low-energy power-law photon index consistent with $\alpha_1^{\text{syn}} = -2/3$, a spectral break at ~ 50 –100 keV, a second power-law photon index consistent with $\alpha_2^{\text{syn}} = -3/2$ at intermediate energies, a second spectral break (representing the peak in νF_ν) varying with time in the range $E_{\text{peak}} \sim 300$ keV–6 MeV, and a third power-law segment $\beta \sim -2.6$ describing the spectrum above E_{peak} .

These results triggered deeper investigations on the consistency of the spectra with synchrotron emission in a marginally fast cooling regime (i.e. with cooling frequency ν_c smaller but comparable with the characteristic frequency ν_m : $\nu_c \lesssim \nu_m$). Oganessian et al. (in prep.) performed spectral fitting using a synchrotron model instead of empirical functions and testing the low-energy spectral shape thanks to the inclusion of simultaneous optical detections, concluding that the synchrotron spectral shape is a good fit to the data and that the optical flux lies on the extrapolation of the synchrotron spectrum. A synchrotron model with $\nu_c \sim \nu_m$ was also found to be a good description of the data in 19 single-pulse GBM bursts (Burgess et al. 2018).

In this paper, motivated by the identification of two spectral breaks in the *Fermi* burst GRB 160625B (Ravasio et al. 2018), we report on the systematic search for this feature in the brightest *Fermi*/GBM bursts. To date, the presence of a low-energy break has been reported only in long GRBs (Oganessian et al. 2017, 2018; Ravasio et al. 2018). We extended, for the first time, the search for this feature to short GRBs as well. We selected the ten brightest long GRBs and the ten brightest short GRBs detected by the GBM (Sect. 2). We performed a spectral analysis to identify the possible presence of a low-energy spectral break, following the method described in Sect. 3. The results are presented in Sect. 4, and a discussion of their physical implications in the context of the GRB standard model is proposed in Sect. 5. In Sect. 6 we summarise the main results of this work.

2. The sample

We sorted the GRBs included in the online GBM Catalogue¹ according to their 10–1000 keV fluence of the best fitting model and selected the brightest ten from the long class and ten from the short class. This selection corresponds to fluence cuts $F > 1.79 \times 10^{-4}$ erg cm⁻² and $F > 5.72 \times 10^{-6}$ erg cm⁻² for long and short GRBs, respectively. The list of selected events is reported in Table 1 (long GRBs) and in Table 2 (short GRBs).

A selection based on the fluence ensures a good photon statistics (required to identify, with a certain degree of confidence, a possible low-energy break) and the possibility of

Table 1. Ten long GRBs with the largest fluence (10–1000 keV) in the GBM catalogue.

| GRB Name | T_{90} (s) | Fluence (10^{-4} erg cm ⁻²) | Redshift |
|-------------|-------------------|---|----------|
| 171010[792] | 107.27 ± 0.81 | 6.72 ± 0.02 | 0.3285 |
| 160625[945] | 453.38 ± 0.57 | 6.68 ± 0.02 | 1.406 |
| 160821[857] | 43.01 ± 0.72 | 5.48 ± 0.02 | – |
| 170409[112] | 64.0 ± 0.72 | 3.19 ± 0.01 | – |
| 180720[598] | 48.9 ± 0.36 | 3.18 ± 0.01 | 0.654 |
| 171227[000] | 37.63 ± 0.57 | 3.05 ± 0.01 | – |
| 090618[353] | 112.39 ± 1.09 | 2.74 ± 0.02 | 0.54 |
| 100724[029] | 114.69 ± 3.24 | 2.43 ± 0.01 | – |
| 130606[497] | 52.22 ± 0.72 | 2.15 ± 0.01 | – |
| 101014[175] | 449.42 ± 1.41 | 1.79 ± 0.01 | – |

Notes. The last three digits in the name (in square brackets) refer to the naming convention of GBM triggers. The prompt duration and the 10–1000 keV fluence of the time-integrated spectra are listed in Cols. 2 and 3, and refer to information reported in the online GBM catalogue. The last column gives the redshift, if available.

Table 2. Ten short GRBs with the largest fluence (10–1000 keV) in the GBM catalogue.

| GRB Name | T_{90} (s) | Fluence (10^{-6} erg cm ⁻²) |
|-------------|-----------------|---|
| 170206[453] | 1.17 ± 0.10 | 10.80 ± 0.16 |
| 120323[507] | 0.38 ± 0.04 | 10.66 ± 0.13 |
| 140209[313] | 1.41 ± 0.26 | 9.52 ± 0.18 |
| 090227[772] | 0.30 ± 0.02 | 8.93 ± 0.17 |
| 150819[440] | 0.96 ± 0.09 | 7.75 ± 0.15 |
| 170127[067] | 0.13 ± 0.04 | 7.41 ± 0.21 |
| 120624[309] | 0.64 ± 0.16 | 7.14 ± 0.16 |
| 130701[761] | 1.60 ± 0.14 | 6.30 ± 0.14 |
| 130504[314] | 0.38 ± 0.18 | 6.01 ± 0.14 |
| 090228[204] | 0.45 ± 0.14 | 5.72 ± 0.11 |

Notes. The last three digits in the name (in square brackets) refer to the naming convention of GBM triggers. The prompt duration and the fluence of the time-integrated spectra are listed in Cols. 2 and 3, and refer to information reported in the online GBM catalogue.

performing time-resolved analysis. This is crucial to study if and how this spectral feature evolves in time, and whether its evolution is related to other evolving quantities such as the peak energy. From our selection we excluded GRB 090902B and GRB 130427A for the following reasons. GRB 090902B, which would satisfy our selection, has a prominent high-energy emission detected by the LAT during the prompt phase, which extends low energies and dominates the emission below ~ 30 keV (Abdo et al. 2009). Moreover, as shown in Ryde et al. (2010) and Pe’er et al. (2012), its spectrum seems to be dominated by a thermal photospheric emission component. These reasons both prevent the identification of a possible low-energy break in the main spectral component, which is the feature we want to investigate in this work. GRB 130427A, due to its large fluence, suffered from pile-up effects (Preece et al. 2014) and a standard analysis can be performed only on its precursor, which does not satisfy our selection criterion. We thus excluded this GRB from our sample. We note, however, that a spectral analysis of the precursor is reported by Preece et al. (2014), who find consistency

¹ <https://heasarc.gsfc.nasa.gov/W3Browse/fermi/fermigbrst.html>

with synchrotron emission. One of the GRBs included in our sample, GRB 160625B, was already analysed in Ravasio et al. (2018), who identified a clear spectral break and a good consistency of the overall spectrum with synchrotron radiation in a marginally fast cooling regime (see also Zhang et al. 2018; Wang et al. 2017; Lü et al. 2017). For homogeneity, here we reanalyse its spectra with the same procedure adopted in this work for the other bursts.

3. Spectral analysis

The GBM is composed of 12 sodium iodide (NaI, 8 keV–1 MeV) and 2 bismuth germanate (BGO, 200 keV–40 MeV) scintillation detectors (Meegan et al. 2009). We analysed the data from the two NaI and one BGO with the highest count rate. For long GRBs we used CSPEC data, which have 1024 ms time resolution, while for short GRBs we selected Time Tagged Event (TTE) data, with shorter time binning (64 ms). Spectral data files and the corresponding response files were obtained from the online archive¹. Spectral analysis was performed with the public software RMFIT (v. 4.3.2). We followed the procedure explained in the Data Analysis Threads and Caveats². In particular, we selected the energy channels in the range 8–900 keV for NaI detectors, and 0.3–40 MeV for BGO detectors, and excluded the channels in the range 30–40 keV due to the presence of the iodine K-edge at 33.17 keV³. To model the background, we selected background spectra in time intervals before and after the burst and modelled them with a polynomial function up to the fourth order. For the time-resolved analysis, the light curve is rebinned imposing a signal-to-noise ratio $S/N > 60$. This selection is performed on the most illuminated NaI detector. The choice of optimising the S/N of the NaI, regardless of the S/N in the BGO, is motivated by our interest in the low-energy break, that (if present) lies below 100 keV, i.e. within the energy range of the NaI detectors (8–900 keV). Given the relatively large value of the S/N , the χ^2 statistic is used in the fitting procedure.

We analysed both time-integrated and time-resolved spectra with two different empirical functions: a smoothly broken power law (SBPL) and a double smoothly broken power law (2SBPL; see Ravasio et al. 2018 for the description of their functional form). The SBPL is made of two power laws, with spectral indices α and β , smoothly connected at some break energy (usually corresponding to the νF_ν peak of the spectrum, E_{peak}). The 2SBPL is a single continuous function that allows the spectra to be fit with three power laws (with photon indices named α_1 , α_2 , and β) smoothly connected at two breaks (hereafter E_{break} and E_{peak}). The 2SBPL function was found to fit the spectrum of GRB 160625B significantly better than the SBPL, revealing the presence of a break at low energies in addition to the usual peak of the νF_ν spectrum. An example of a spectrum fitted with the 2SBPL function is shown in Fig. 1. In particular it refers to the time bin 7.17–8.19 s of GRB 180720. The best value for the low-energy break is $E_{\text{break}} = 93.62^{+91.6}_{-64.1}$ keV and the photon indices of the power law below and above it are $\alpha_1 = -0.71^{+0.13}_{-0.46}$ and $\alpha_2 = -1.47^{+0.20}_{-0.26}$, while the peak energy is $E_{\text{peak}} = 2.42^{+1.02}_{-0.64}$ MeV and the high-energy photon index $\beta = -2.38^{+0.23}_{-0.30}$. The plot also shows for comparison the power laws expected from synchrotron emission (dashed lines).

The SBPL is one of the empirical functions generally used to model GRB spectra (Kaneko et al. 2006; Gruber et al. 2014).

² <https://fermi.gsfc.nasa.gov/ssc/data/>

³ https://fermi.gsfc.nasa.gov/ssc/data/analysis/GBM_caveats.html

It gives more flexibility than the Band function to properly model the curvature around E_{peak} , at the expense of having one additional free parameter. However, introducing a fifth free parameter usually results in ill-determined unconstrained parameters and degeneracy or correlations among them (Kaneko et al. 2006). For this reason, the value describing the curvature is usually kept fixed to a value that has been found to satisfactorily describe most of the spectra (Goldstein et al. 2012; Gruber et al. 2014). The problem is even more severe when fitting a 2SBPL, which has eight free parameters, two of them describing the curvature around E_{break} and around E_{peak} . We decided to fix the values of the parameters describing the curvatures, both for the SBPL and for the 2SBPL. Since we wanted to test a synchrotron origin, we chose curvatures that reproduce the shape of synchrotron spectra. We built a synthetic synchrotron spectrum for a population of partially cooled electrons and compared it to the SBPL and 2SBPL to find for which values of the curvatures these empirical functions mimic the shape of the synchrotron spectrum. We repeated the test for different cooling efficiencies (i.e. for different values of the ratio $E_{\text{peak}}/E_{\text{break}}$) and derived that the most suitable parameters for the curvature are $n = 2$ (see Ravasio et al. 2018 for their definition). These values correspond to very smooth curvatures.

For the joint analysis of the two NaI and the BGO data we used an intercalibration constant factor between the brightest NaI and the other NaI and BGO detectors. Since we were comparing two nested models, the best fit model for each analysed spectrum was chosen by applying a χ^2 -based F -test: we select the more complex model (2SBPL) only if it corresponds to an improvement with a significance larger than 3σ .

4. Results

In this section, we present separately the results of the spectral analysis for the samples of long and short GRBs listed in Tables 1 and 2, respectively.

4.1. Long GRBs

The results of the time-integrated analysis for the sample of long GRBs are given in Table A.1. For each GRB, the table lists the GRB name (in bold if the best fit model is a 2SBPL, i.e. if a break is present), the time interval used for the time-integrated spectral analysis, the best fit parameters of the best fit model (either a SBPL or a 2SBPL) chosen according to the significance of the F -test (last column), and the total $\chi^2/\text{d.o.f.}$

According to the F -test, in two long GRBs the improvement in the χ^2 caused by the inclusion of a low-energy break in the fitting function has a significance corresponding to 1σ and 2σ : in these two cases the best fit model is then a SBPL. On the contrary, in all eight of the remaining long GRBs the 2SBPL function significantly improves the fit provided by the SBPL model (at more than 3σ). In particular, the improvement is significant at more than 8σ in six cases and between 4σ and 8σ in two cases. This means that in eight of the ten brightest long GRBs the time-integrated spectrum shows the presence of two characteristic energies: a low-energy spectral break E_{break} (typically between a few dozen and a few hundred keV) and the usual peak of the νF_ν spectrum E_{peak} (typically between a few hundred and a few thousand keV). Table A.1 lists the parameters of the best fit model for the time-integrated spectra of each long GRB.

In three cases where the presence of the low-energy spectral break is strongly supported by the significance of the F -test (namely, GRB 171010, GRB 090618, and GRB 101014), the

break energy is located at $E_{\text{break}} \sim 10$ keV, very close to the low-energy edge of the GBM (~ 8 keV): very few data points are available below the break to properly constrain the value of photon index α_1 . In all of these cases, we find that the best fit value of α_1 reaches very hard values, at odds with results derived when E_{break} is located at higher energies, far from the low-energy edge of the instrument. We discuss this issue in more detail in Appendix B. When calculating mean values we included only spectra with $E_{\text{break}} > 20$ keV. For the time-integrated analysis, the typical values of the parameters of the 2SBPL model are $\alpha_1 = -0.76^{+0.03}_{-0.03}$, $\alpha_2 = -1.65^{+0.05}_{-0.04}$, $\log(E_{\text{break}}) = 2.11^{+1.11}_{-1.08}$, $\log(E_{\text{peak}}) = 2.98^{+1.72}_{-1.66}$, and $\beta = -2.85^{+0.09}_{-0.08}$.

For the eight long GRBs with a low-energy break, we also performed a time-resolved analysis to investigate the presence of the break on shorter timescales and its temporal evolution, also in comparison to the overall spectral evolution. The time-resolved spectral analysis is performed on temporal bins of 1.024 s in width. We fit all the spectra with the SBPL and 2SBPL models. If the latter model results in a smaller χ^2 , we assess the significance of the improvement with the F -test. If there are two (or more) consecutive time bins where the 2SBPL does not produce a better fit (i.e. with significance $< 3\sigma$), we combine them in order to acquire more statistics and further test the presence of a spectral break. This procedure shows that, in most cases, it is sufficient to combine two or three consecutive bins to constrain E_{break} . This time-rebinning was applied to $\sim 28\%$ of the time-resolved spectra.

All the results of the time-resolved analysis on the eight long GRBs that present a break energy E_{break} in the time-integrated spectra are summarised in Table A.2 and shown in Fig. C.1. For each GRB the upper panel shows the light curve, while the lower panels show the results of the spectral analysis: from top to bottom the spectral indices α_1 and α_2 (or α only, if the best fit model is a SBPL), the photon index β , the characteristic energies E_{break} and E_{peak} (or E_{peak} only, if the best fit model is a SBPL), and the ratio $E_{\text{peak}}/E_{\text{break}}$. In most of the time-resolved spectra (139/199, i.e. $\sim 70\%$) the best fit model is the 2SBPL function.

In the time-resolved spectra there are cases where E_{break} is close to the low-energy threshold of the *Fermi* band (i.e. ~ 10 – 20 keV). In particular, we find $E_{\text{break}} < 20$ keV in all time-resolved spectra of GRB 171010 and in 10 of the 35 time-resolved spectra of GRB 090618 and GRB 101014; it should be noted that these three GRBs are the same that have $E_{\text{break}} < 20$ keV in the time-integrated spectrum). As for the results of the time-integrated analysis, we consider in the following analysis the time-resolved spectra with $E_{\text{break}} > 20$ keV (see Appendix B for a motivation of this choice).

Figure 2 shows the distribution of the spectral indices α_1 , α_2 , and β of the 2SBPL model fits (filled histograms). These histograms are built considering the time-resolved spectra for which the 2SBPL is the best fit model. The inferred mean values are $\langle \alpha_1 \rangle = -0.58$ (with standard deviation $\sigma_{\alpha_1} = 0.16$) and $\langle \alpha_2 \rangle = -1.52$ ($\sigma_{\alpha_2} = 0.20$). These values are remarkably consistent with those predicted for a population of electrons emitting synchrotron radiation in the so-called fast cooling regime.

For comparison, Fig. 2 also shows the distributions (solid line, black histograms) of the spectral indices α and β (i.e. below and above the peak energy E_{peak} , respectively) for those spectra sufficiently well fitted by the SBPL (i.e. E_{break} is not required according to the F -test). The distribution of the spectral index α of the SBPL model is consistent with the value $\langle \alpha \rangle = -1.02$ ($\sigma_{\alpha} = 0.19$) typically reported in the literature which is obtained employing single break fitting functions (e.g. SBPL or Band). It is interesting to note that this distribution is placed almost in

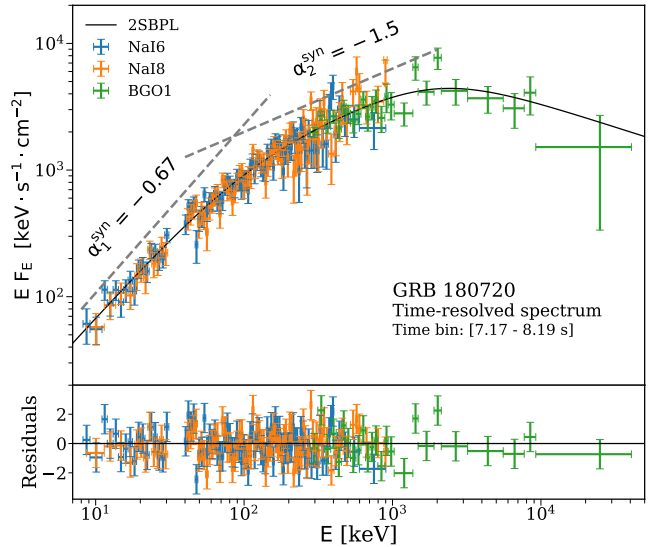


Fig. 1. Example of a spectrum best fitted by a 2SBPL (i.e. three power laws smoothly connected at two breaks). The data correspond to the time interval 7.17–8.19 s from the trigger of GRB 180720. The best fit values of the 2SBPL model parameters are $\alpha_1 = -0.71$, $E_{\text{break}} = 93.62$ keV, $\alpha_2 = -1.47$, $E_{\text{peak}} = 2.42$ MeV, and $\beta = -2.38$. The different instruments are colour-coded as shown in the legend. The two dashed lines show, for comparison, the power laws (with the photon indices) predicted by synchrotron emission. Data-to-model residuals are shown in the *bottom panel*.

the middle of the two distributions of the spectral indices α_1 and α_2 of the 2SBPL model, namely of the two power laws below and above E_{break} . As was done in [Ravasio et al. 2018](#), we also performed the fit of the time resolved spectra by fixing the slope of the low-energy power-law index to the value $\alpha_1 = -2/3$ predicted by the synchrotron theory. We did this analysis for the spectra in which the low-energy power-law index is harder, at more than 1σ , than $-2/3$. These represent 47% of the spectra. When we fix $\alpha_1 = -2/3$ in the 2SBPL model, most ($\sim 85\%$) of the time resolved spectra can still be adequately fitted (probability $> 10^{-2}$) and the other free parameters of the model assume values which are consistent, within their errors, with those obtained leaving α_1 free.

The spectral index β , describing the high-energy part of the spectrum (i.e. above E_{peak}), has a distribution centred around $\langle \beta \rangle = -2.33$ ($\sigma_{\beta} = 0.24$) for the spectra fitted by the SBPL, while the 2SBPL fits provide a distribution centred at $\langle \beta \rangle = -2.81$ with ($\sigma_{\beta} = 0.37$). Thus, when the spectrum requires the presence of two breaks (i.e. three power laws) the high-energy power law is steeper than the cases when only one break is present.

The scatter plot of α_1 versus α_2 is shown in Fig. 3. The reference synchrotron values are shown with dashed lines. Despite the large scatter of the data points, a correlation analysis suggests that a statistically significant correlation (with correlation coefficient $\rho = 0.35$ and chance probability $P = 0.002$) is present. Also, within individual GRBs (shown in Appendix C) the two indices seem to track each other.

The top panel of Fig. 4 shows the distributions of the two characteristic energies of the 2SBPL fits (blue histograms for E_{break} and red histograms for E_{peak}), and E_{peak} of the SBPL fit (black empty histogram). $E_{\text{peak}}^{\text{SBPL}}$ has a log-normal distribution centred at $\langle \log(E_{\text{peak}}^{\text{SBPL}}/\text{keV}) \rangle = 2.46$ ($\sigma_{E_{\text{peak}}} = 0.40$). Instead, when a second break in the fitting function is introduced and its presence in the spectrum is statistically

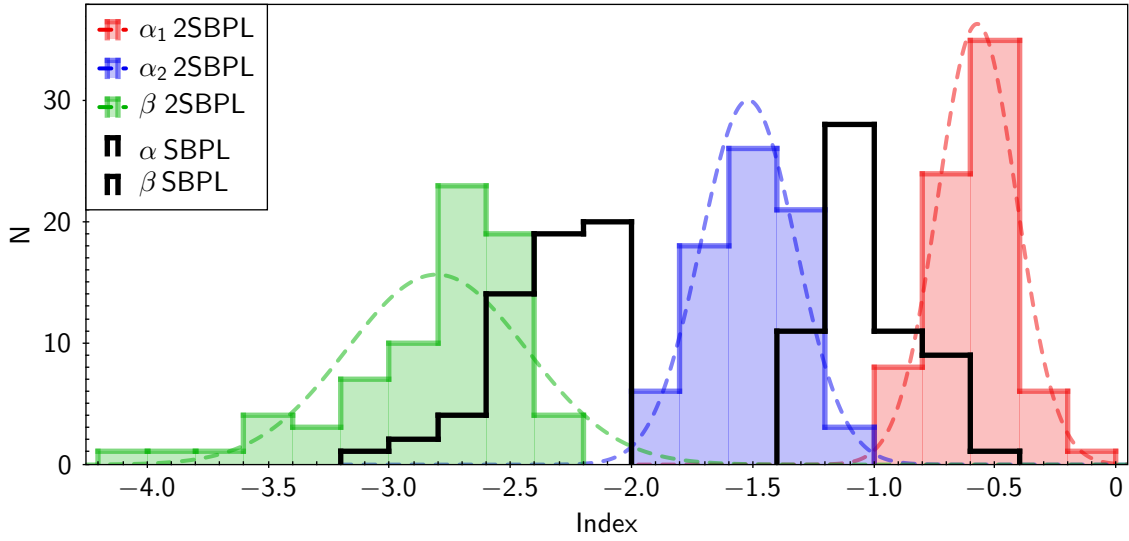


Fig. 2. Long GRBs, time-resolved analysis: distribution of the spectral indices, according to the best fit model, for the time-resolved fits of the eight long GRBs showing a spectral break. The spectral indices α_1 , α_2 , and β of the 2SBPL model are shown with red, blue, and green filled histograms, respectively. Gaussian functions showing the central value and standard deviation of the distributions are overlapped to the histograms (colour-coded dashed curves). The black empty histograms represent the distributions of the two photon indices α and β of the SBPL model, for spectra where the SBPL is the best fit model.

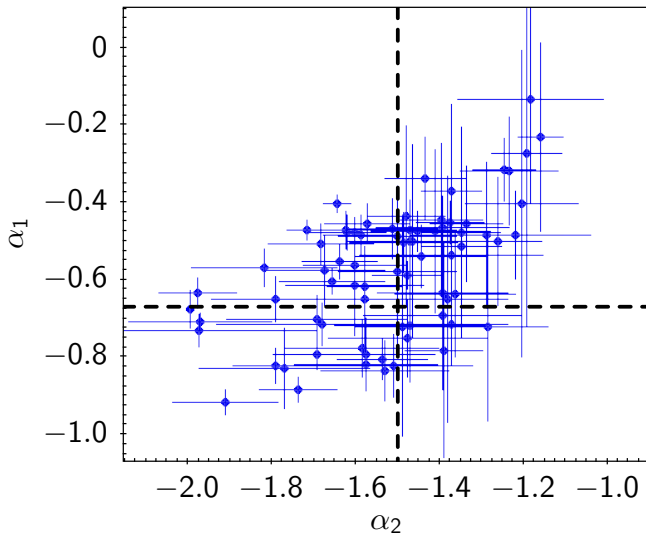


Fig. 3. Long GRBs, time-resolved analysis: power-law photon index α_1 vs. the power-law photon index α_2 . The two black dashed lines mark the expected values for synchrotron emission.

significant, the distributions of E_{break} and E_{peak} are centred at the mean values $\langle \log(E_{\text{break}}/\text{keV}) \rangle = 2.00$ ($\sigma_{E_{\text{break}}} = 0.34$) and $\langle \log(E_{\text{peak}}^{2\text{SBPL}}/\text{keV}) \rangle = 3.00$ ($\sigma_{E_{\text{peak}}} = 0.26$). The bottom panel shows the scatter plot of E_{peak} and E_{break} obtained from the 2SBPL fits.

From the comparison of the best fit values obtained when the best fit model is a SBPL and when is a 2SBPL (Figs. 2 and 4) we notice the following: i) the distribution of α^{SBPL} lies between the distributions of α_1 and α_2 (see also Oganessian et al. 2018); ii) on average $E_{\text{peak}}^{\text{SBPL}} < E_{\text{peak}}^{2\text{SBPL}}$; and iii) $\beta^{\text{SBPL}} > \beta^{2\text{SBPL}}$.

4.2. Short GRBs

For the short GRBs in our sample we analyse only the time-integrated spectra because we find that there is not enough signal

to separate them in several bins as we did for long GRBs. The results for each GRB are shown in Table A.3.

Contrary to what was found in long GRBs, none of the ten short GRB time-integrated spectra shows evidence for a low-energy spectral break. They are all well fitted by the SBPL function, thus by two power laws smoothly connected at the νF_ν peak. This peak energy has a typical value $\langle \log(E_{\text{peak}}/\text{keV}) \rangle = 2.70$ and standard deviation $\sigma_{E_{\text{peak}}} = 0.47$. The distribution of the two photon indices α and β are shown in Fig. 5. It is interesting to note that α , which describes the index of the power law below E_{peak} , has a typical value $\langle \alpha \rangle = -0.78$ ($\sigma_\alpha = 0.23$), i.e. consistent within 1σ with the synchrotron value $\alpha_1^{\text{syn}} - 2/3$. The photon index β of the spectral power law above E_{peak} has a mean value $\langle \beta \rangle = -2.59$, with $\sigma_\beta = 0.33$.

5. Discussion

Our results show that in the majority of the brightest long GRBs detected by the *Fermi*/GBM the spectrum below the peak energy E_{peak} cannot be fitted just by a single power law; it requires an additional break at low energies. This feature, unnoticed for a long time, has been recently discovered in GRBs detected by *Swift*. Oganessian et al. (2017, 2018), in a joint *Swift*/XRT and BAT analysis of GRBs with prompt emission detected simultaneously by both instruments, modelled the spectrum adding a spectral break between 3 keV and 22 keV, and a third power law below the break energy. They obtained values of the photon indices below and above the break consistent with synchrotron predictions. This allowed them to speculate on a synchrotron origin and associate the break energy with the synchrotron cooling frequency, ν_c . Ravasio et al. (2018) found the same feature in the spectrum of GRB 160625B, one of the brightest GRBs ever detected by the *Fermi*/GBM. Considering the mean value of the break energy of GRB 160625B ($E_{\text{break}} \sim 100$ keV) observed in the time-resolved spectra of 1 s interval and interpreting the spectrum as synchrotron emission in fast cooling regime, Ravasio et al. (2018) derived a limit on the value of the

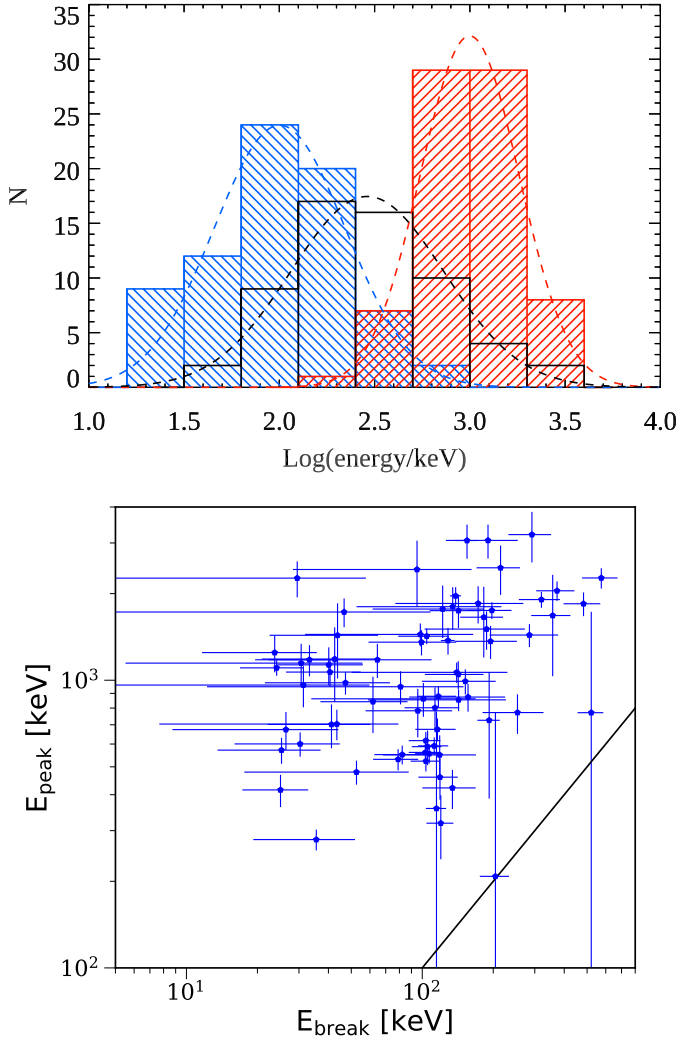


Fig. 4. Long GRBs, time-resolved analysis. *Top panel:* distributions of the characteristic energies (E_{break} and E_{peak} for the 2SBPL (blue and red hatched histogram, respectively) and E_{peak} for the SBPL model (black empty histogram). Gaussian functions showing the central value and standard deviation for each distribution are overlotted to the histograms (with the same colour-coding). *Bottom panel:* E_{peak} versus E_{break} scatter plot (2SBPL model). The equality line is shown with a solid line.

comoving magnetic field B' of the order of

$$B' \sim 13 \Gamma_2^{-1/3} v_{c,100\text{keV}}^{-1/3} t_{1s}^{-2/3} \text{ G}, \quad (1)$$

where we assume a typical bulk Lorentz factor of 100 and t is the typical integration time of the analysed spectra.

Considering the results presented in this work, E_{break} found in the brightest *Fermi* bursts is distributed in the range ~ 20 – 600 keV (Fig. 4). Since the distribution of bulk Lorentz factors Γ (as obtained in Ghirlanda et al. 2018) spans two orders of magnitude from ~ 20 – 2000 , we derive an estimate of the corresponding distribution of the comoving magnetic field $B' \in [1, 40]$ G.

These values of the comoving magnetic field are very small compared to expectations for the typical GRB emitting region (but see e.g. Kumar et al. 2007; Zhang & Pe'er 2009; Zhang & Yan 2011 for a Poynting flux dominated outflow where a low magnetic field can be achieved at large radii). Therefore, while our results positively solve the issue of the inconsistency of observed spectra and synchrotron radiation, they open a new

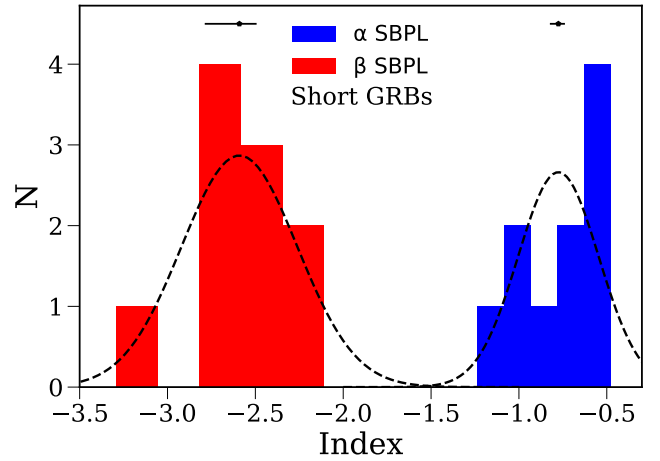


Fig. 5. Short GRBs, time-integrated spectra: distributions of the spectral indices α and β for the best fit model (which is always a SBPL) for all ten short GRBs in Table A.3. The mean values and typical errors are shown at the top of the corresponding distributions (black symbols). Gaussian functions showing the mean value and standard deviation are overlotted on the histograms.

challenging question: within the standard GRB model and synchrotron theory, having the cooling break at a few hundred keV implies that the magnetic field of the emission region is very small, which is at odds with the MGauss value expected according to the standard model (for quasi-constant jet Poynting flux). The problem then shifts on the search for a mechanism that can justify such a low magnetic field in the emission region.

The case of short GRBs is even more problematic. As shown in Sect. 4.2, short GRBs have a single power law below the νF_ν peak, characterised by a hard photon index: $\alpha = -0.78 \pm 0.23$. The power law between E_{break} and E_{peak} , namely the one with photon index $\alpha_2 = -1.5$, seems to be missing in short GRBs. This suggests that electrons do not cool efficiently in short GRBs, implying that the magnetic field is even smaller than in long GRBs, raising an efficiency problem which is difficult to explain within the scenario of the standard model.

A self-consistent picture for the prompt emission mechanism should explain, among other things, i) spectra with two breaks, which we have found in this work for bright long GRBs; ii) the variability of the prompt emission; and iii) the huge amount of energy radiated during the prompt. We cautiously note, however, that these considerations are drawn under the hypothesis of the synchrotron process: if the emission is not due to this process, then some other radiation mechanism will need to be invoked to explain the current findings.

6. Conclusions

In this work we presented the spectral analysis of the brightest ten long and ten short GRBs detected by *Fermi*/GBM in 10 years of activity. We systematically fitted two empirical functions to the spectra: a smoothly broken power law (SBPL) and a double smoothly broken power law (2SBPL). The reason for testing a 2SBPL model was to identify the possible presence of two characteristic energies in the prompt emission spectra: the usual peak energy E_{peak} and a spectral break E_{break} at lower energies, recently identified in a sample of *Swift* bursts (Oganesyan et al. 2017, 2018) and in one *Fermi*/GBM bright burst (Ravasio et al. 2018).

For long GRBs, the time-integrated analysis shows that in eight of the ten brightest GBM GRBs, the standard empirical fitting function (SBPL) fails to provide an acceptable fit: the data require an additional spectral break E_{break} , located between ~ 10 keV and 300 keV. For these eight GRBs we also performed a time-resolved analysis, finding that $\sim 70\%$ of the time-resolved spectra also show strong evidence of a low-energy spectral break. For this sample of time-resolved spectra from eight bright long GRBs, the log-normal distributions of E_{break} and E_{peak} are centred around the mean values $\langle \log(E_{\text{break}}/\text{keV}) \rangle = 2.00 \pm 0.34$ and $\langle \log(E_{\text{peak}}/\text{keV}) \rangle = 3.00 \pm 0.26$. The spectrum below E_{break} is nicely described by a power law. The photon indices of the power laws below E_{break} and between E_{break} and E_{peak} are, respectively, $\langle \alpha_1 \rangle = -0.58 \pm 0.16$ and $\langle \alpha_2 \rangle = -1.52 \pm 0.20$, remarkably consistent with the predicted values for synchrotron emission in a marginally fast cooling regime (for an example of a typical spectrum, see Fig. 1).

The remaining time-resolved spectra ($\sim 30\%$) are best fitted by a simple SBPL, i.e. the improvement in χ^2 found by fitting a 2SBPL to the data has a significance in that is smaller than the threshold value of 3σ . In these cases, one power law is sufficient to model the spectra below E_{peak} , and its typical value is $\langle \alpha \rangle = -1.02 \pm 0.19$. Interestingly, this value lies between the values of α_1 and α_2 , as shown in Fig. 2. Speculating that most of the spectra present a break below E_{peak} , the value of α can be understood as a sort of average value between α_1 and α_2 : these are indeed asymptotic values that can be reached if E_{break} and E_{peak} are far from each other. Moreover, we note that when the model is a simple SBPL, the fit tends to place E_{peak} at a smaller energy, thus also resulting in a softer β (see Fig. 2).

For short GRBs, none of the time-integrated spectra of the ten brightest events shows a break at low energies. The best fit model is always a SBPL, and the distribution of the index below E_{peak} is centred at $\langle \alpha \rangle = -0.78 \pm 0.23$. As for α_1 in long GRBs, this value is consistent within 1σ with the low-energy (below $h\nu_c$) synchrotron photon index α_1^{syn} . In a synchrotron interpretation, this implies that in short GRBs ν_c is even closer to ν_m and the power law between E_{break} and E_{peak} , namely the one with asymptotic spectral index $\alpha_2^{\text{syn}} = -1.5$, is missing.

In both long and short GRBs we find that the hard spectrum below E_{break} and its photon index suggest a synchrotron origin for the observed GRB prompt spectra. As discussed in Sect. 5, assuming that the observed E_{break} corresponds to the synchrotron cooling frequency, the implied magnetic field strength in the emitting region is small (between 1 and 40 G in the comoving frame), i.e. orders of magnitudes smaller than expected for a dissipation region located at $\sim 10^{13-14}$ cm from the central engine.

If electrons really cool over a relatively long time, to give rise to the observed low-energy slope, they are emitting in a

relatively small magnetic field, at odds with the expectations that the magnetic field plays a major role to power and launch the GRB jet. This requires a major revision of the standard GRB model.

Acknowledgements. M.E.R. is thankful to the Observatory of Brera for the kind hospitality. INAF-Prin 2017 funding is acknowledged. L.N. acknowledges funding from the European Union's Horizon 2020 Research and Innovation programme under the Marie Skłodowska-Curie grant agreement n. 664931. This research has made use of data obtained through the High Energy Astrophysics Science Archive Research Center Online Service provided by the NASA/Goddard Space Flight Center, and specifically this work has made use of public *Fermi*-GBM data. We also would like to thank for support the implementing agreement ASI-INAF n.2017-14-H.0.

References

- Abdo, A. A., Ackermann, M., Ajello, M., et al. 2009, *ApJ*, **706**, L138
 Burgess, J. M., Bégué, D., Bacerlj, A., et al. 2018, ArXiv e-prints [arXiv:1810.06965]
 Chand, V., Chattopadhyay, T., Rao, A. R., et al. 2019, *ApJ*, **874**, 70
 Daigne, F., Bošnjak, Ž., & Dubus, G. 2011, *A&A*, **526**, A110
 Derishev, E. V., Kocharovskiy, V. V., & Kocharovskiy, V. V. 2001, *A&A*, **372**, 1071
 Ghirlanda, G., Nava, L., Ghisellini, G., Celotti, A., & Firmani, C. 2009, *A&A*, **496**, 585
 Ghirlanda, G., Nappo, F., Ghisellini, G., et al. 2018, *A&A*, **609**, A112
 Ghisellini, G., Celotti, A., & Lazzati, D. 2000, *MNRAS*, **313**, L1
 Goldstein, A., Burgess, J. M., Preece, R. D., et al. 2012, *ApJS*, **199**, 19
 Gruber, D., Goldstein, A., & Weller von Ahlefeld, V. 2014, *ApJS*, **211**, 12
 Kaneko, Y., Preece, R. D., Briggs, M. S., et al. 2006, *ApJS*, **166**, 298
 Katz, J. I. 1994, *ApJ*, **432**, L107
 Kumar, P., & Zhang, B. 2015, *Phys. Rep.*, **561**, 1
 Kumar, P., McMahon, E., Panaitescu, A., et al. 2007, *MNRAS*, **376**, L57
 Lü, H. J., Lü, J., Zhong, S. Q., et al. 2017, *ApJ*, **849**, 71
 Meegan, C., Lichti, G., Bhat, P. N., et al. 2009, *ApJ*, **702**, 791
 Nakar, E., Ando, S., & Sari, R. 2009, *ApJ*, **703**, 675
 Nava, L., Ghirlanda, G., Ghisellini, G., & Celotti, A. 2011, *A&A*, **530**, A21
 Oganessian, G., Nava, L., Ghirlanda, G., & Celotti, A. 2017, *ApJ*, **846**, 137
 Oganessian, G., Nava, L., Ghirlanda, G., & Celotti, A. 2018, *A&A*, **616**, A138
 Pe'er, A., & Zhang, B. 2006, *ApJ*, **653**, 454
 Pe'er, A., Zhang, B.-B., Ryde, F., et al. 2012, *MNRAS*, **420**, 468
 Preece, R. D., Briggs, M. S., Mallozzi, R. S., et al. 1998, *ApJ*, **506**, L23
 Preece, R. D., Briggs, M. S., Mallozzi, R. S., et al. 2000, *ApJS*, **126**, 19
 Preece, R., Burgess, J. M., von Kienlin, A., et al. 2014, *Science*, **343**, 51
 Ravasio, M. E., Oganessian, G., Ghirlanda, G., et al. 2018, *A&A*, **613**, A16
 Rees, M. J., & Meszaros, P. 1994, *ApJ*, **430**, L93
 Ryde, F., Axelsson, M., Zhang, B. B., et al. 2010, *ApJ*, **709**, L172
 Sari, R., Narayan, R., & Piran, T. 1996, *ApJ*, **473**, 204
 Sari, R., Piran, T., & Narayan, R. 1998, *ApJ*, **497**, L17
 Tavani, M. 1996, *ApJ*, **466**, 768
 Uhm, Z. L., & Zhang, B. 2014, *Nat. Phys.*, **10**, 351
 Wang, Y.-Z., Wang, H., Zhang, S., et al. 2017, *ApJ*, **836**, 81
 Zhang, B., & Pe'er, A. 2009, *ApJ*, **700**, L65
 Zhang, B., & Yan, H. 2011, *ApJ*, **726**, 90
 Zhang, B. B., Zhang, B., Castro-Tirado, A. J., et al. 2018, *Nat. Astron.*, **2**, 69
 Zheng, W., Shen, R. F., Sakamoto, T., et al. 2012, *ApJ*, **751**, 90

Appendix A: Additional tables

Table A.1. Best fit parameters inferred from the time-integrated analysis of the ten long GRBs analysed in this work.

| Name | Time interval (s) | Norm (ph s ⁻¹ cm ² keV) | α_1 (α) | E_{break} (keV) | α_2 | E_{peak} (keV) | β | $\chi^2/\text{d.o.f.}$ | F_{test} |
|---------------|-------------------|---|---|---|---|--|---|------------------------|-------------------|
| 171010 | [0.003–100.35 s] | 0.12 ^{+0.04} _{-0.04} | +1.16 ^{+0.13} _{-0.13} | 12.39 ^{+0.13} _{-0.13} | -1.4 ^{+0.01} _{-0.01} | 182.2 ^{+1.8} _{-1.8} | -2.7 ^{+0.02} _{-0.02} | 829.22/335 | >8 σ |
| 160625 | [187.43–212.00 s] | 4.58 ^{+0.15} _{-0.15} | -0.56 ^{+0.01} _{-0.01} | 119.9 ^{+3.79} _{-3.79} | -1.7 ^{+0.03} _{-0.03} | 646.5 ^{+18.0} _{-18.0} | -2.67 ^{+0.03} _{-0.03} | 638.55/342 | >8 σ |
| 160821 | [117.76–154.63 s] | 9.08 ^{+0.48} _{-0.51} | -0.87 ^{+0.02} _{-0.02} | 158.4 ^{+21.4} _{-22.3} | -1.59 ^{+0.05} _{-0.05} | 1295.0 ^{+55.8} _{-50.0} | -2.61 ^{+0.05} _{-0.05} | 411.91/226 | >8 σ |
| 170409 | [17.66–116.99 s] | 1.68 ^{+0.07} _{-0.07} | -0.88 ^{+0.01} _{-0.01} | 315.3 ^{+24.1} _{-24.3} | -1.78 ^{+0.05} _{-0.05} | 1156.0 ^{+93.4} _{-81.5} | -3.39 ^{+0.18} _{-0.15} | 527.62/347 | >8 σ |
| 180720 | [-1.02–56.32 s] | 4.19 ^{+0.85} _{-0.77} | -0.73 ^{+0.08} _{-0.09} | 38.12 ^{+12.6} _{-8.32} | -1.48 ^{+0.06} _{-0.05} | 774.8 ^{+50.0} _{-36.9} | -2.61 ^{+0.07} _{-0.05} | 589.06/343 | >8 σ |
| 171227 | [0.003–58.24 s] | 1.92 ^{+0.14} _{-0.14} | -0.75 ^{+0.02} _{-0.02} | 153.3 ^{+14.4} _{-14.5} | -1.68 ^{+0.05} _{-0.05} | 1064.0 ^{+81.5} _{-69.8} | -2.98 ^{+0.11} _{-0.1} | 466.24/344 | >8 σ |
| 090618 | [0.003–161.28 s] | 2.27 ^{+0.43} _{-1.1} | -0.19 ^{+0.07} _{-2.83} | 7.75 ^{+1.26} _{-0.81} | -1.5 ^{+0.02} _{-0.03} | 157.2 ^{+6.8} _{-6.27} | -2.87 ^{+0.1} _{-0.1} | 339.3/231 | 4.1 σ |
| 100724 | [-5.12–137.22 s] | 1.26 ^{+0.05} _{-0.05} | -0.87 ^{+0.01} _{-0.01} | – | – | 659.9 ^{+132.0} _{-75.0} | -2.05 ^{+0.02} _{-0.02} | 444.62/339 | 1.0 σ |
| 130606 | [-3.07–70.66 s] | 10.17 ^{+0.37} _{-0.36} | -1.19 ^{+0.01} _{-0.01} | – | – | 600.7 ^{+69.9} _{-52.4} | -2.11 ^{+0.02} _{-0.02} | 483.38/333 | 2.0 σ |
| 101014 | [0.003–466.44 s] | 0.6 ^{+0.04} _{-0.1} | -0.05 ^{+0.03} _{-0.0} | 10.99 ^{+0.88} _{-0.91} | -1.38 ^{+0.03} _{-0.04} | 221.7 ^{+18.3} _{-14.9} | -2.35 ^{+0.08} _{-0.07} | 488.14/342 | 7.4 σ |

Notes. In bold are flagged those GRBs with a statistically significant spectral break E_{break} in the low-energy part of their spectrum. The table lists the GRB name, the time interval over which the spectrum has been accumulated, and the results from the spectral analysis: best fit normalisation (see [Ravasio et al. 2018](#)), photon index α_1 (or α when the best fit model is a SBPL), break energy E_{break} (only if the best fit model is a 2SBPL), photon index α_2 (only if the best fit model is a 2SBPL), peak energy E_{peak} , photon index β , total χ^2 and degrees of freedom (d.o.f.), and the significance of the improvement of the fit from a SBPL to a 2SBPL (estimated according to the F -test).

Table A.2. Average results of the time-resolved analysis for the seven long GRBs that display a low-energy break E_{break} in their time-integrated spectrum (see GRBs in bold in Table 1; GRB 171010 is not included, because all time-resolved spectra have $E_{\text{break}} < 20$ keV).

| Name | # of spectra | $\langle\alpha_1\rangle$ | $\langle\alpha_2\rangle$ | $\langle E_{\text{break}}\rangle$ (keV) | $\langle E_{\text{peak}}\rangle$ (keV) | $\langle\beta\rangle$ |
|--------------|--------------|--------------------------|--------------------------|---|--|-----------------------|
| 160625 | 18/24 | -0.51 (0.08) | -1.62 (0.15) | 110.66 (22.65) | 805.98 (668.66) | -2.79 (0.24) |
| 160821 | 17/27 | -0.74 (0.15) | -1.51 (0.17) | 133.49 (94.49) | 1643.16 (745.55) | -2.62 (0.17) |
| 170409 | 10/14 | -0.62 (0.0) | -1.66 (0.25) | 334.60 (141.47) | 1304.06 (656.459) | -3.47 (0.37) |
| 180720 | 15/24 | -0.54 (0.14) | -1.41 (0.15) | 55.67 (39.43) | 1093.26 (481.31) | -2.58 (0.20) |
| 171227 | 10/11 | -0.47 (0.10) | -1.43 (0.13) | 134.29 (36.39) | 1212.26 (348.01) | -2.90 (0.24) |
| 090618 | 1/18 | -0.83 (0.10) | -1.77 (0.20) | 118.56 (50.36) | 550.05 (93.29) | -3.57 (0.55) |
| 101014 | 3/17 | -0.32 (0.23) | -1.32 (0.11) | 36.31 (14.36) | 862.77 (113.23) | -2.62 (0.16) |
| Mean values: | | -0.58 (0.16) | -1.52 (0.20) | 135.31 (112.15) | 1177.59 (679.28) | -2.81 (0.37) |

Notes. For each GRB, the table lists the mean value and standard deviation σ of the best fit parameter distribution inferred from the time-resolved analysis for spectra with best fit model given by a 2SBPL and with $E_{\text{break}} > 20$ keV. The second column gives the number of spectra satisfying these conditions over the total number of spectra analysed.

Table A.3. Best fit parameters for the time-integrated analysis of the ten brightest short GRBs analysed in this work.

| Name | Time interval (s) | Norm (ph s ⁻¹ cm ² keV) | α | E_{peak} (keV) | β | $\chi^2/\text{d.o.f.}$ | Prob |
|--------|-------------------|---|---|--|---|------------------------|--------|
| 170206 | [-0.128–1.664 s] | 1.41 ^{+0.21} _{-0.20} | -0.62 ^{+0.03} _{-0.04} | 280.4 ^{+18.1} _{-13.3} | -2.38 ^{+0.06} _{-0.08} | 361.63/346 | 0.2707 |
| 120323 | [-0.064–0.576 s] | 98.11 ^{+22.6} _{-14.1} | -1.04 ^{+0.08} _{-0.06} | 109.5 ^{+20.5} _{-4.87} | -2.11 ^{+0.03} _{-0.05} | 372.44/353 | 0.2286 |
| 090227 | [-0.064–0.256 s] | 1.68 ^{+0.19} _{-0.23} | -0.60 ^{+0.02} _{-0.03} | 1576.0 ^{+67.3} _{-67.1} | -2.82 ^{+0.06} _{-0.20} | 358.17/349 | 0.3559 |
| 150819 | [-0.064–1.152 s] | 25.21 ^{+2.3} _{-2.52} | -1.24 ^{+0.02} _{-0.03} | 595.3 ^{+188.0} _{-73.8} | -2.41 ^{+0.16} _{-0.19} | 349.53/347 | 0.4518 |
| 170127 | [-0.064–0.256 s] | 0.78 ^{+0.19} _{-0.39} | -0.47 ^{+0.05} _{-0.11} | 755.5 ^{+23.4} _{-56.0} | -3.29 ^{+0.06} _{-0.59} | 312.4/348 | 0.9151 |
| 120624 | [0.000–0.320 s] | 5.1 ^{+0.62} _{-0.62} | -0.83 ^{+0.02} _{-0.02} | 2892.0 ^{+299.0} _{-205.0} | -2.49 ^{+0.12} _{-0.17} | 344.93/345 | 0.491 |
| 130701 | [-0.064–1.600 s] | 0.46 ^{+0.12} _{-0.11} | -0.69 ^{+0.04} _{-0.06} | 892.3 ^{+90.9} _{-74.0} | -2.68 ^{+0.21} _{-0.26} | 324.75/347 | 0.7989 |
| 130504 | [-0.032–0.384 s] | 0.87 ^{+0.15} _{-0.17} | -0.57 ^{+0.03} _{-0.04} | 1033.0 ^{+74.9} _{-46.9} | -2.79 ^{+0.10} _{-0.25} | 375.6/352 | 0.1853 |
| 090228 | [-0.064–0.512 s] | 2.29 ^{+0.32} _{-0.33} | -0.76 ^{+0.03} _{-0.03} | 663.7 ^{+51.3} _{-38.0} | -2.87 ^{+0.17} _{-0.28} | 346.76/349 | 0.5238 |

Notes. The best fit model is always a SBPL.

Appendix B: Spectra with $E_{\text{break}} < 20$ keV

In this section we discuss spectra where the 2SBPL parameter E_{break} has a best fit value close to the low-energy threshold of sensitivity of the GBM ($E_{\text{th}} \sim 8$ keV). In these spectra, α_1 behaves very differently to typical α_1 values inferred for all the other spectra. Figure B.1 shows E_{break} versus α_1 for the full sample of long GRBs (time-resolved analysis). A sudden change in the location of points is visible at low E_{break} , with a well-defined separation at $E_{\text{break}} \sim 20$ keV (dashed horizontal line). In particular, spectra with $E_{\text{break}} < 20$ keV (red and orange symbols) have considerably harder values of the low-energy photon index (i.e. $\alpha_1 > -0.2$). The uncertainty on these values is large, as shown by the black cross plotted on top of the orange/yellow points, which represents the average errors on the two parameters represented. When the break energy is $> \sim 20$ keV, the distribution of α_1 is completely different, with almost no overlapping between the two distributions. Also, the distribution is narrower and the typical error is smaller (black cross plotted on top of the blue points).

The peculiar distribution of the points in the $E_{\text{break}}-\alpha_1$ plane strongly suggests an instrumental effect at the origin of the hard values derived when $E_{\text{break}} < 20$ keV. The low-energy edge of sensitivity of the GBM is $E_{\text{th}} \sim 8$ keV (solid grey line in Fig. B.1), implying that when E_{break} is below 20 keV, a few channels are available for the determination of α_1 . Even though this is most certainly true, it is less evident why α_1 should be systematically overestimated in these cases.

We also note that $\sim 85\%$ of the time resolved spectra with $E_{\text{break}} < 20$ keV belong to a single GRB, i.e. 171010 (orange symbols in Fig. B.1, see also Chand et al. 2019). *Swift*/XRT data (as in the GRBs analysed by Oganessian et al. 2017) would be of paramount importance in cases like this one to better characterise the low-energy photon index of GRB 171010 and other similar cases. Unfortunately, for GRB 171010 there are no *Swift*/XRT data simultaneous to the GBM data.

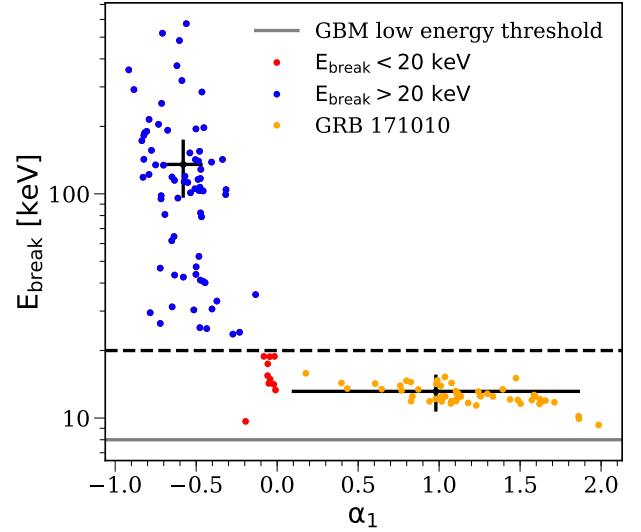


Fig. B.1. Relation between the break energy E_{break} and the index α_1 of the power law describing the spectrum below E_{break} . The sample includes all time-resolved spectra of the ten long GRBs analysed in this work. The dashed black horizontal line indicates a difference in behaviour, with spectra below this line having very hard and ill-constrained best fit values of α_1 . All the parameter distributions and their mean values and standard deviations presented in this work rely only on spectra with E_{break} larger than this threshold value (blue points). The majority ($\sim 85\%$) of the spectra with $E_{\text{break}} < 20$ keV (red points) belong to one specific GRB, namely GRB 171010 (orange points). The mean values of E_{break} and α_1 (along with their average errors) are represented for each sample with the solid black lines. The low-energy threshold of the GBM NaI detectors is shown with a grey solid line.

Appendix C: Spectral evolution of individual GRBs

In this section, we show the light curve and temporal evolution of the best fit spectral parameters for each GRB with break energy identified in the time-integrated spectrum (i.e. eight long GRBs).

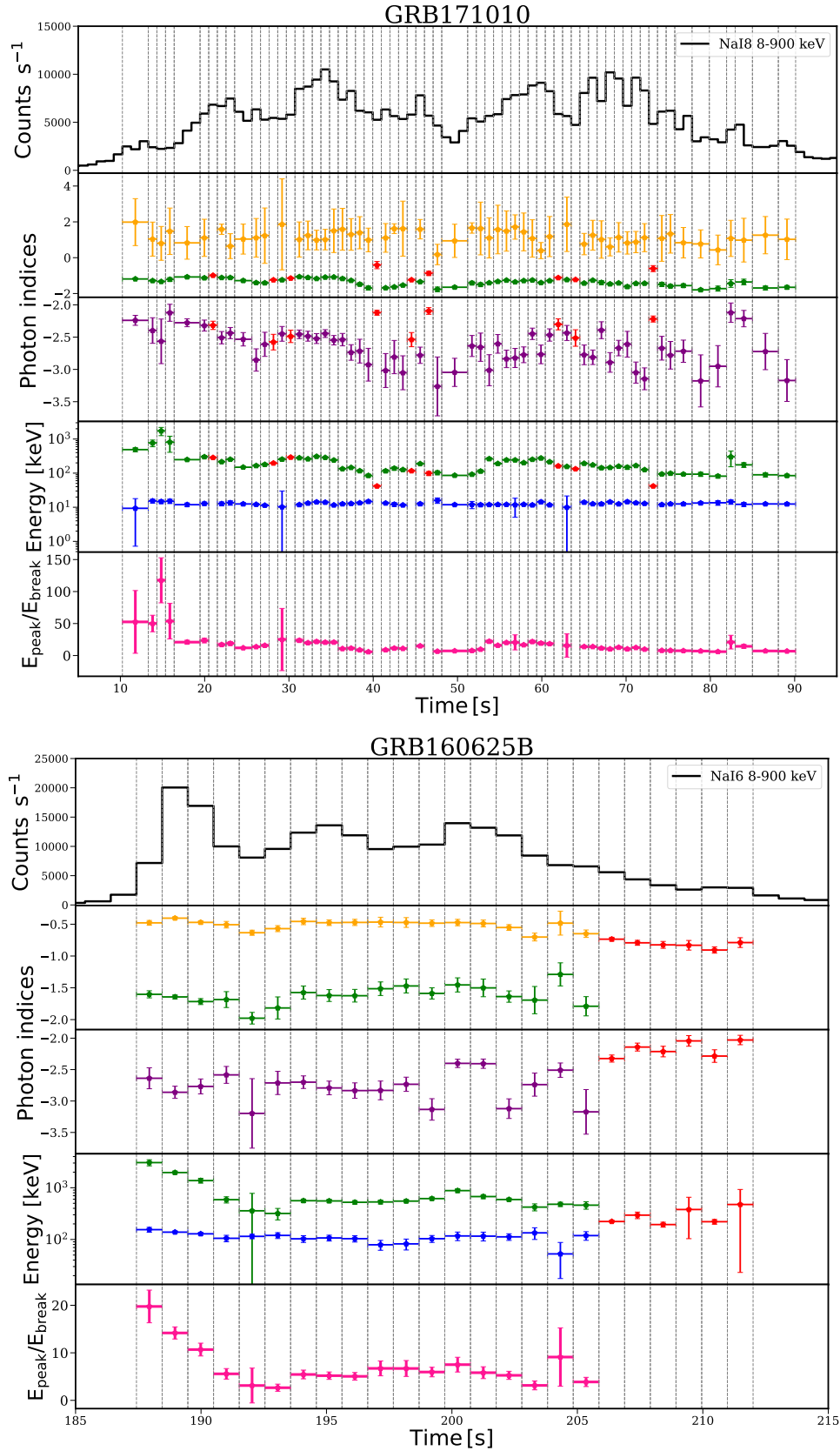


Fig. C.1. Evolution of the best fit spectral parameters for each GRB displaying a low-energy break. *First panel:* light curve of the GRB, in the energy range 8–900 keV. The vertical lines mark the time bins selected for the time-resolved analysis. *Panels below:* temporal evolution of all best fit parameters (of the 2SBPL or SBPL function, according to which model fits best the spectrum of the time bin). While all the parameters of the SBPL fit are shown as red points, different colours have been used to represent the parameters of the 2SBPL fit. In particular, *from top to bottom, second panel:* photon indices α_1 (yellow points) and α_2 (green points) of the 2SBPL function, and α (red points) of the SBPL function. *Third panel:* two photon indices β (in purple for the 2SBPL function and in red for SBPL). *Fourth panel:* E_{break} (blue points) and E_{peak} (green points) for 2SBPL, and E_{peak} for SBPL (red points). *Bottom panel:* ratio $E_{\text{peak}}/E_{\text{break}}$.

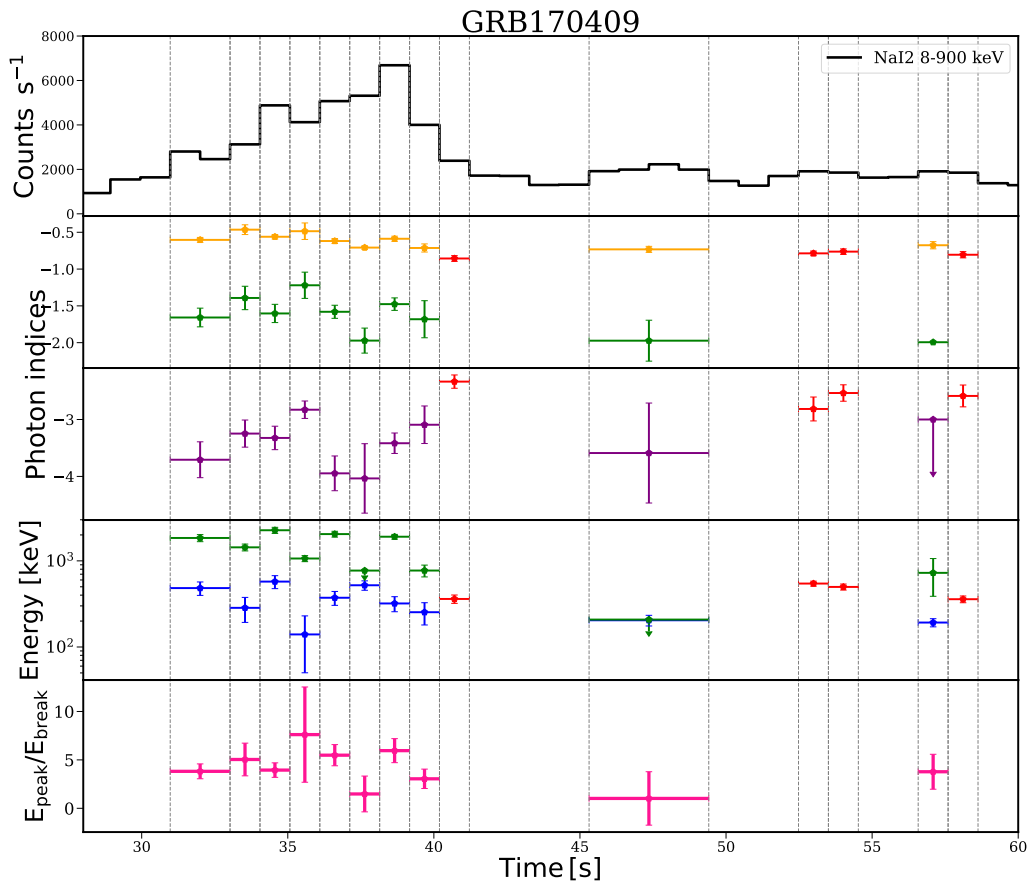
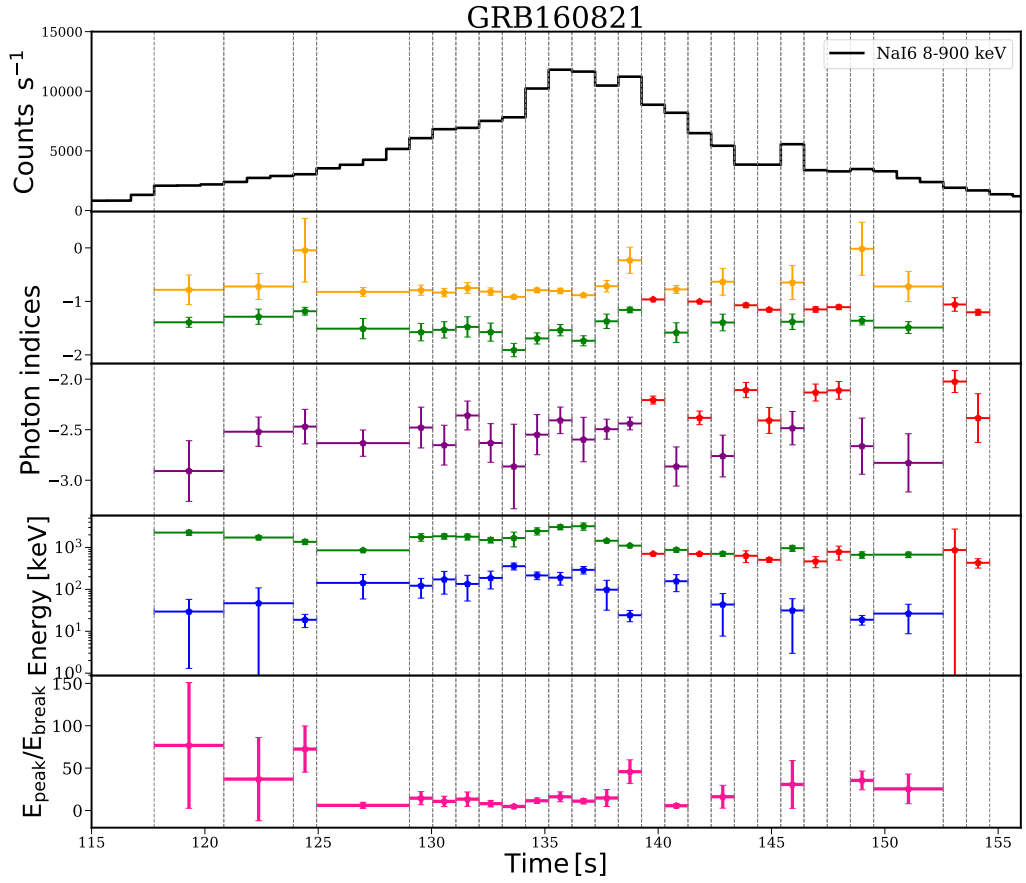


Fig. C.1. continued.

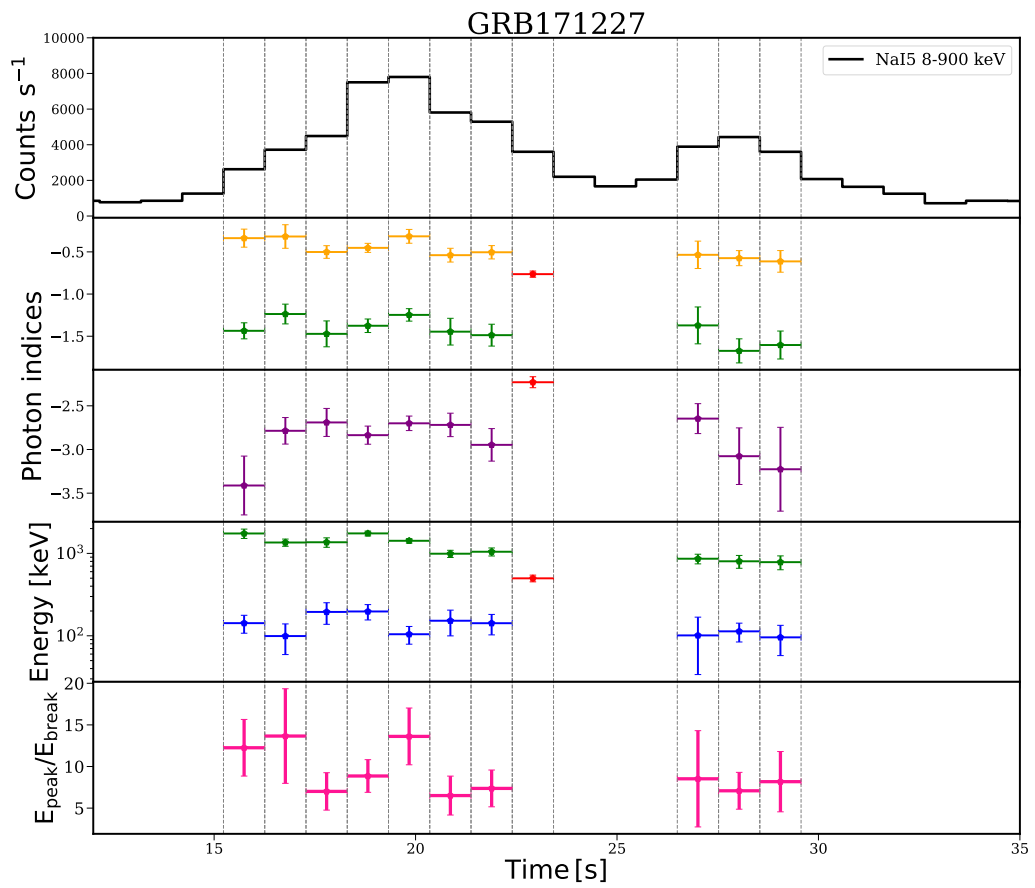
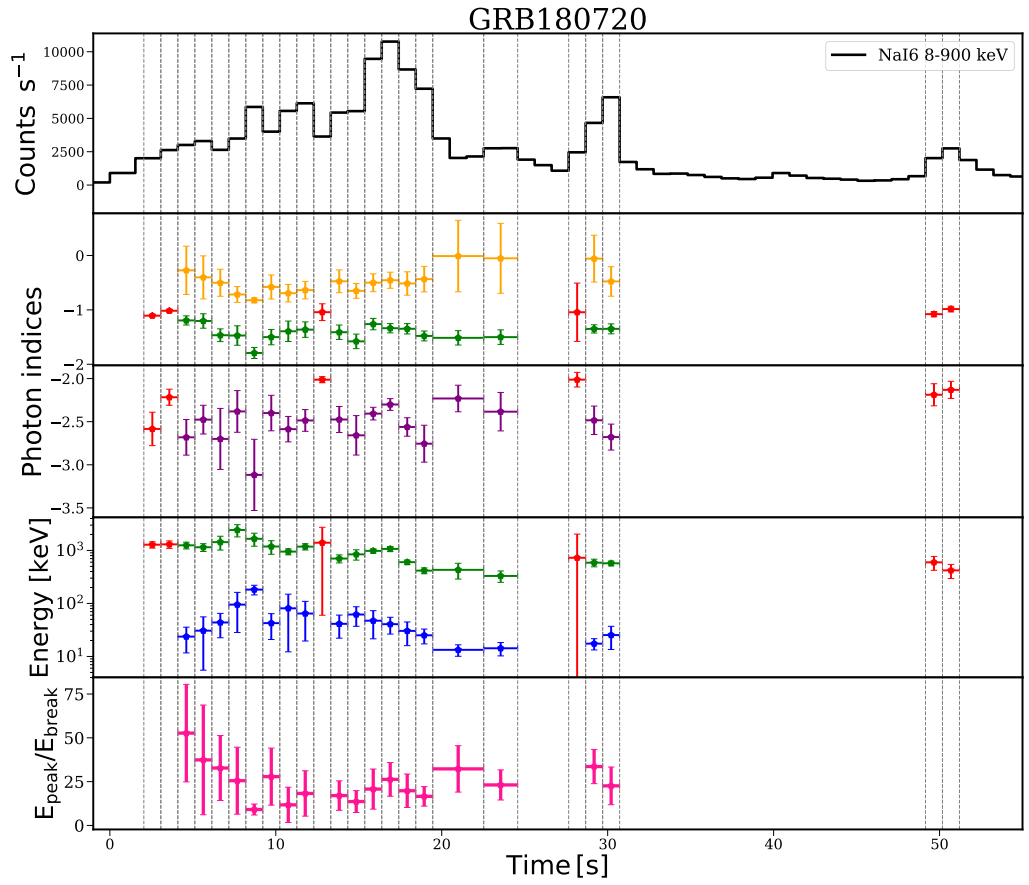


Fig. C.1. continued.

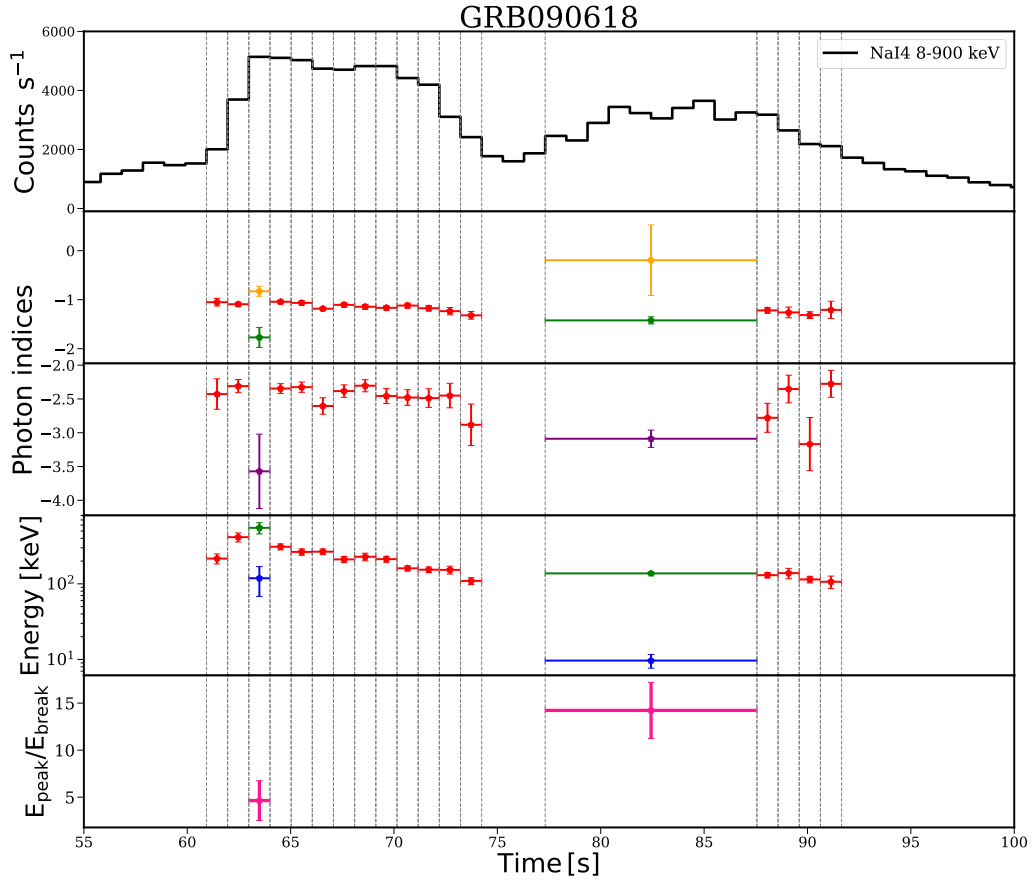


Fig. C.1. continued.

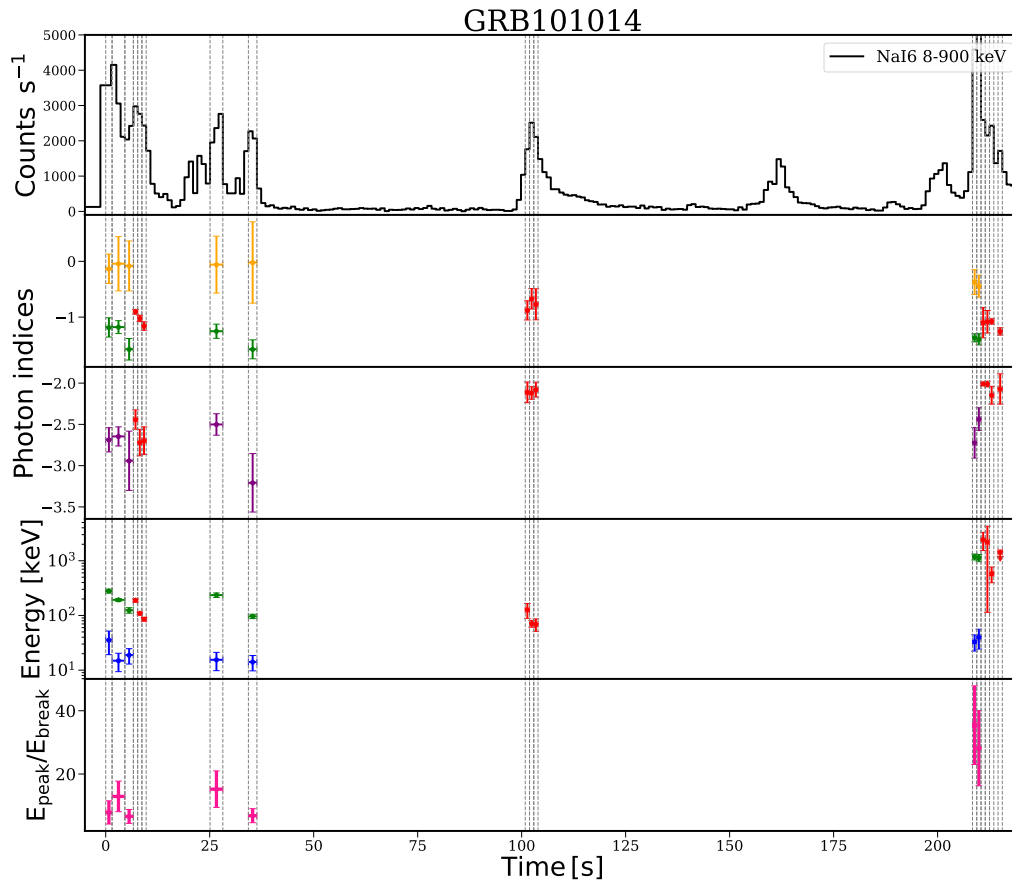


Fig. C.1. continued.