

FRACTAL ANALYSIS

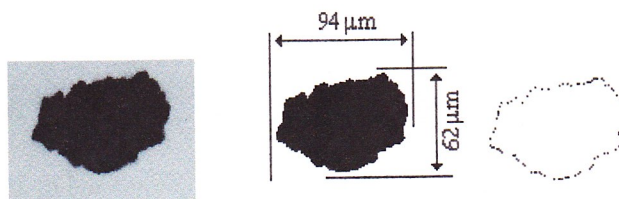


FIGURE 1.

Sequence of analog image, thresholded image and perimeter of particle *LS1*.

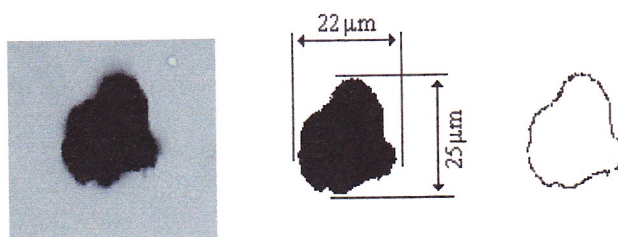


FIGURE 2.

Sequence of analog image, thresholded image and perimeter of particle *LS10*.

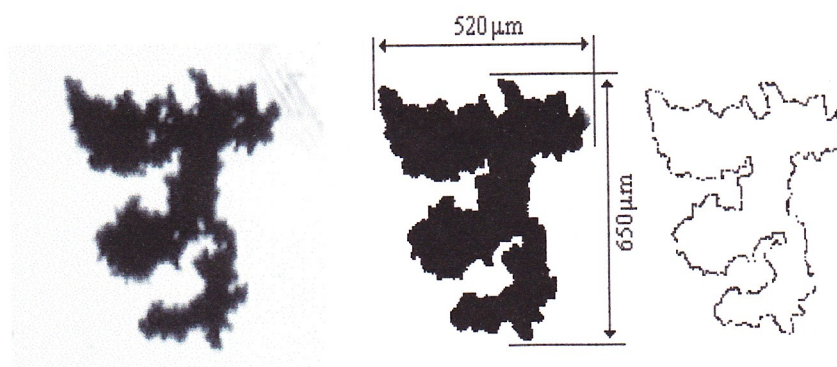
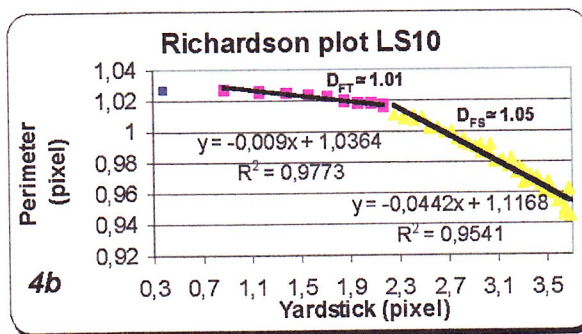
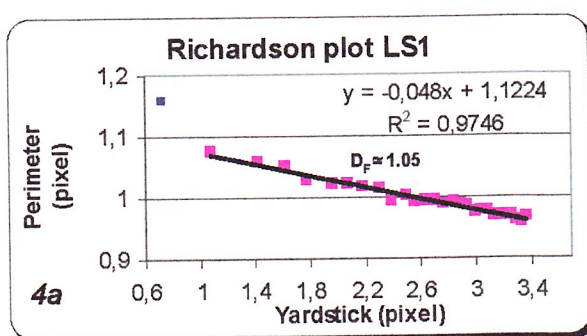


FIGURE 3.

Sequence of analog image, thresholded image and perimeter of an *R* particle (*R35*).



FIGURES 4a and b.

a) The RICHARDSON plot of particle *LS1*.

b) The RICHARDSON plot of particle *LS10*, which suggests two fractal dimensions.

A FRACTAL DEBRIS CLASSIFIER

The experimental histogram:

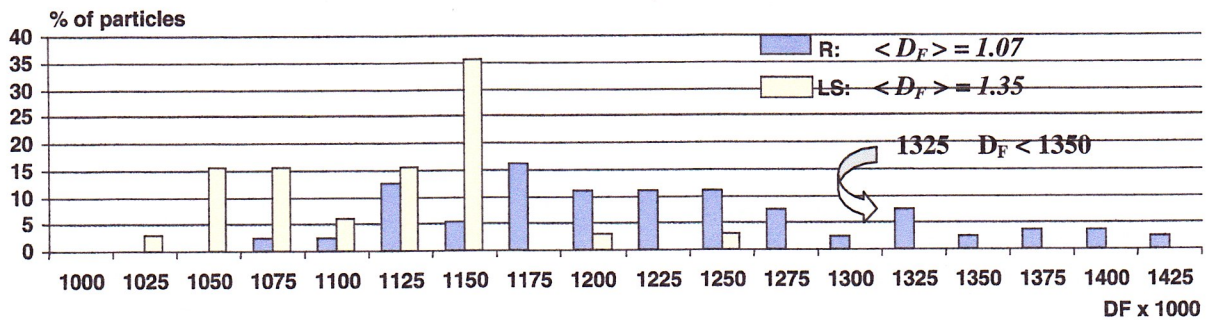
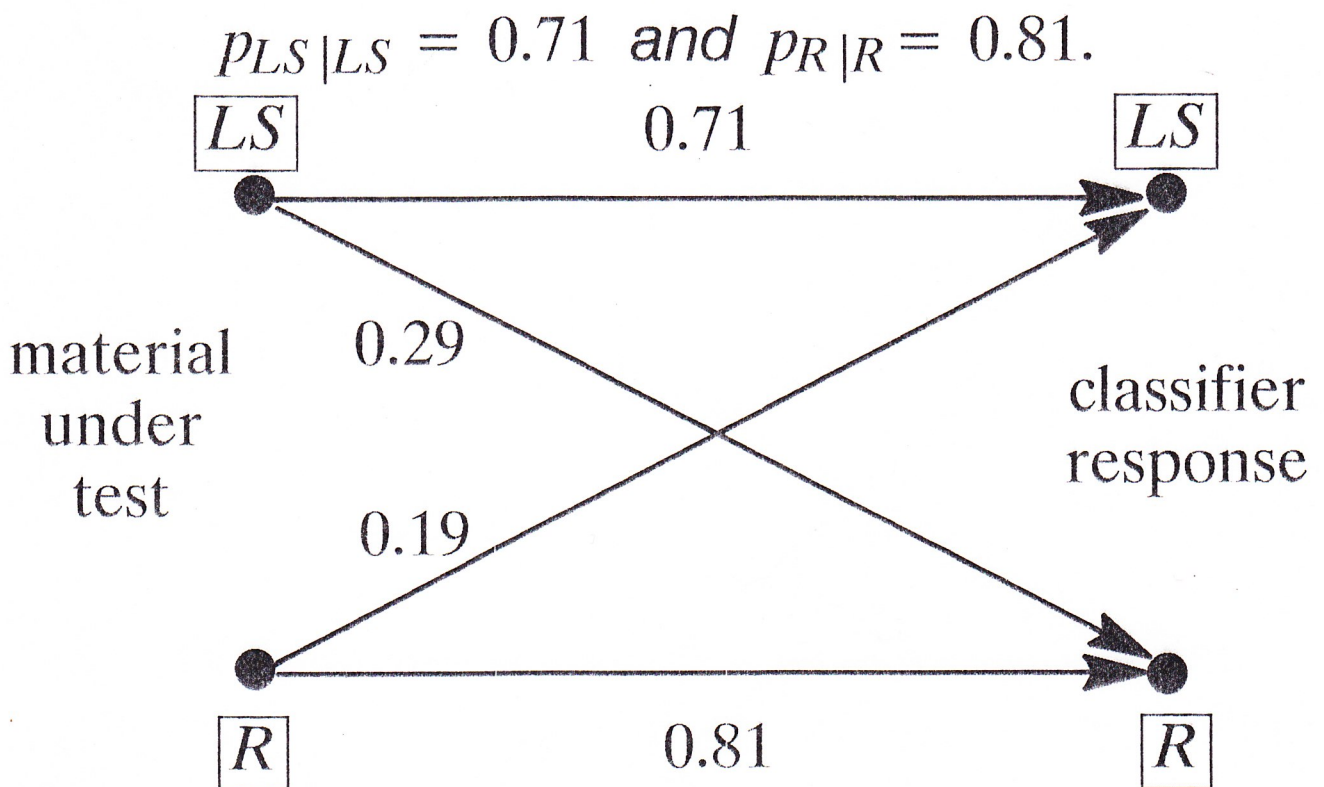


FIGURE 5.

Fractal dimension histograms of materials *LS* and *R*. Average values, $\langle D_F \rangle$, are included.

The result:



(C E SHANNON' s noisy, binary transmission channel).