



Implementation of noninvasive neurally adjusted ventilatory assist in pediatric acute respiratory failure: a controlled before-after quality improvement study

Giovanna Chidini^{1*}, Daniele De Luca², Edoardo Calderini¹, Stefano Scalia Catenacci¹, Tiziana Marchesi¹, Thomas Langer³, Cesare Gregoretti⁴ and Giorgio Conti⁵

Abstract

Backgrounds: Pediatric noninvasive neurally adjusted ventilatory assist (NIV-NAVA) has been shown to improve patient-ventilator interaction but no data on clinical outcomes are available. Aim of this study was to compare NIV-NAVA with noninvasive pressure support (NIV-PS) in children with acute hypoxemic respiratory failure (AHRF), in a single-center before-after study. A cohort of thirty-four NIV-PS patients (before group) admitted to our PICU within the 2 years prior NAVA introduction was compared with a cohort of thirty children treated with NIV-NAVA during implementation phase (after group). The primary end-point was intubation rate between groups. Days on mechanical ventilation, number of invasive devices, nosocomial infections, PICU/hospital length of stay (LOS), and physiological parameters at 2 and 24 h after admission were considered.

Results: Intubation rate was lower in the NIV-NAVA group as compared to the NIV-PS group ($p = 0.006$). Patients treated with NIV-NAVA required fewer invasive devices ($p = 0.032$) and had lower incidence of ventilator-acquired pneumonia ($p = 0.004$) and shorter PICU ($p = 0.032$) and hospital LOS ($p = 0.013$). At 2 h, NIV-NAVA compared with NIV-PS resulted in higher $\text{paO}_2:\text{FIO}_2$ ($p = 0.017$), lower paCO_2 ($p = 0.002$), RR ($p = 0.026$), and HR ($p = 0.009$).

Conclusions: Early NIV-NAVA vs NIV-PS was associated to lower intubation rate and shorter PICU and hospital LOS. Further studies are needed in order to confirm these preliminary data.

Keywords: Acute respiratory failure, Children, Neurally adjusted ventilatory assist, Noninvasive ventilation

Backgrounds

Acute hypoxemic respiratory failure (AHRF) due to viral infection is a leading cause of admission in pediatric intensive care units (PICU) [1–4].

Traditional treatment includes endotracheal intubation and mechanical ventilation. Recent experiences from pediatric studies showed that noninvasive respiratory support (NRS) has been associated with less adverse

events and mortality compared to endotracheal intubation and invasive mechanical ventilation [5–9]. Nonetheless, in small children, NRS delivered as noninvasive pressure support (NIV-PS) is often associated with the presence of asynchronies due to large leaks and intrinsic characteristics of pediatric respiratory system (high respiratory rate, low tidal volume, short neural inspiratory and expiratory times, weak inspiratory effort) [8, 9].

Consequently, NIV-PS frequently results in a poor patient-ventilator interaction with reported failure rates up to 43% [10].

Neurally adjusted ventilatory assist (NAVA) is an alternative form of ventilatory support synchronous and

* Correspondence: giovanna.chidini@policlinico.mi.it

¹Pediatric Intensive Care Unit, Department of Anesthesia, Intensive Care and Emergency, Fondazione IRCCS Ca' Granda, Ospedale Maggiore Policlinico, Milan, Italy

Full list of author information is available at the end of the article



© The Author(s). 2021 **Open Access** This article is licensed under a Creative Commons Attribution 4.0 International License, which permits use, sharing, adaptation, distribution and reproduction in any medium or format, as long as you give appropriate credit to the original author(s) and the source, provide a link to the Creative Commons licence, and indicate if changes were made. The images or other third party material in this article are included in the article's Creative Commons licence, unless indicated otherwise in a credit line to the material. If material is not included in the article's Creative Commons licence and your intended use is not permitted by statutory regulation or exceeds the permitted use, you will need to obtain permission directly from the copyright holder. To view a copy of this licence, visit <http://creativecommons.org/licenses/by/4.0/>.

proportional to electrical activity of the crural diaphragm (EAdi). Of note, during invasive and noninvasive NAVA, cycling is completely under neural control. Indeed, the EAdi signal results from the activation of the respiratory centers, the conduction of the electric signal through the nuclei of the phrenic nerve, the phrenic nerves and the neuromuscular junction, and finally the activation of the muscular fiber of the diaphragm. Therefore, any pathological process involving the generation and conduction of the impulse from respiratory centers to the diaphragm fibers could interfere with the generation of EAdi signal [10–13].

Recent pediatric trials showed that patient-ventilator interaction is unequivocally improved during both invasive NAVA and noninvasive NAVA compared to conventional pneumatically controlled modes [14–17]. More recently, a short-term physiological randomized controlled trial confirmed previous studies and showed that NIV-NAVA was associated with a dramatic reduction in Asynchrony Index (AI) and all type of asynchronies, particularly ineffective triggering [17]. However, the question remains whether NAVA makes a difference in terms of clinical outcomes in this population, i.e., in terms of intubation rate and PICU and hospital length of stay.

We therefore conducted this retrospective before-after study to compare the clinical efficacy of early delivered NIV-NAVA with conventional NIV-PS to treat children with AHRF.

Methods

Patients and data

The study was approved by the local Ethical Committee, which waived the need for informed consent, as this was a retrospective analysis and data were managed according to hospital privacy policies. This is a before-after study including all consecutive children aging less than 5 years admitted to our PICU with AHRF and treated with NIV-NAVA as first-line NRS (NIV-NAVA group) during the period occurring between January 1, 2017, and December 31, 2018.

The “before” group (NIV-PS) consisted of children with AHRF aging less than 5 years admitted to PICU between January 1, 2015, and December 31, 2016, receiving NIV-PS with PICU ventilators as a first-line NRS. Children who received NRS with turbine-driven ventilators in nonvented or vented configuration (absence of a real expiratory valve) were excluded from the analysis [18]. Our clinical protocols for indication of NRS did not change during the study period. In both periods, children admitted to our PICU were treated with NRS if they fulfilled the following clinical criteria: presence of respiratory distress (as defined by the presence of tachypnea, chest retractions, use of respiratory accessory muscles) and hypoxemia (as defined by peripheral

oxygen saturation < 94% while on oxygen therapy with oxygen therapy with Venturi mask FiO_2 0.4). This study represents a quality improvement project and the revised Standards for Quality Improvement Reporting Excellence (SQUIRE2) guidelines were followed through the project [19].

Noninvasive respiratory support

In the “before group,” NIV-PS was delivered by PICU ventilators equipped with specific leak compensation algorithms (Evita V500 with Y tidal volume sensor; Evita VN500 in infant configuration with Y sensor, Draeger Luebeck; Servo I Maquet (Maquet, Solna, Sweden) in infant configuration). Pressure support level was set according to clinical criteria to obtain a reduction in chest retractions and respiratory rate (RR).

Positive end-expiratory pressure (PEEP) was titrated up to 10 cmH_2O to obtain $\text{SpO}_2 > 94\%$ with $\text{FiO}_2 < 0.6$. The inspiratory trigger was set at maximum sensitivity level not generating autotriggering. The expiratory cycling-off was adjusted by the attending physician to obtain the best patient-ventilator synchrony, according to flow/pressure/time tracings.

In the “after study,” NIV-NAVA was delivered by Servo-I Ventilators in infant mode, equipped with EAdi module (Maquet, Solna, Sweden) and provided with a leak compensation software.

Acquisition of the diaphragm electromyography (EAdi signal) was obtained using dedicated NAVA catheters positioned in lower esophagus at the crural diaphragm [15–17, 20]. To achieve the optimal ventilator assistance in NIV-NAVA, the gain was set to obtain a reduction in chest retractions and RR. PEEP level was titrated up to 10 cmH_2O in order obtain $\text{SpO}_2 > 94\%$ with $\text{FiO}_2 < 0.6$; Edi trigger was set at 0.5 μV above the resting Edi to assist respiratory effort without responding to electrical noise. Expiratory cycling-off during NIV NAVA was fixed at 70% decay in inspiratory flow. Interfaces included full-face masks of different size (Performax Respironics Murrysville, XXS, XS and S in nonvented configuration).

According to our PICU protocols, patients were switched to invasive mechanical ventilation in presence of at least one of the following criteria: severe hemodynamic instability requiring volume load and/or inotropes, severe hypoxemic respiratory failure (failure to maintain $\text{paO}_2:\text{FiO}_2 > 150$ with $\text{FiO}_2 < 0.6$), severe hypercapnia ($\text{paCO}_2 > 55$ torr), and recurrent apneas.

Sedation was provided according to our PICU protocol with dexmedetomidine 0.5–1 mcg/kg/h and to clinical judgment [21]. The routine medical management did not vary in the study period and included standard medical therapy.

Data collection and definitions

Basic clinical data were extracted from electronic clinical chart (Digistat; United Medical Software, Cerbaia, Italy) in which data were taken from ventilator (tidal volume, PEEP, F_{IO_2} , peak inspiratory pressure), from patients monitoring system (systolic blood pressure (SBP), heart rate (HR), peripheral oxygen saturation (SpO_2), and respiratory rate (RR)) and blood gas values. The following variables were collected at admission: PIM2, sex, age, weight, AHRF trigger, and comorbidities. Data were analyzed to confirm that clinical severity at PICU admission did not change overtime.

Days on NRS, days on invasive MV, number of invasive devices per patient (central venous catheter, arterial catheter, chest tube), severe adverse events (cardiac arrest, pneumothorax, central line associated bloodstream infection, ventilator-associated pneumonia), PICU and hospital outcome, and survival at 2 and 6 months were also recorded.

Physiological parameters (RR, SpO_2 , HR, and SBP) were collected from clinical data chart at admission, at 2 h after NRS, and at 24 h after NRS in both groups. Available blood gases values were collected at admission before NRS during oxygen therapy, early after NRS institution, and at 24 h. According to our PICU respiratory failure protocol, the evaluation of NRS success or failure encompasses clinical evaluation (reduction in RR and HR, reduction in chest retractions), improvement in oxygenation, and/or reduction in arterial carbon dioxide tension (evaluated by an arterial blood gas performed approximately 2 h after NRS start). Data were anonymously recorded and stored in a password secured spreadsheet according to the current local regulations.

End points and definitions

The primary end point in both groups was intubation rate. Secondary end point was days on mechanical ventilation (MV), number of invasive devices (central venous catheter, arterial catheter, chest tube, bladder catheter), nosocomial infections, PICU and hospital length of stay, and survival at 2–6 months.

Ventilator-associated pneumonia (VAP) and central line-associated blood stream infections (CLABSI) were defined according to CDC 2017 Definitions [22].

Statistics

Being a study on a new ventilator technique, no a priori sample size calculation could have been performed. Thus, we decided to enroll all patients treated with NIV-NAVA from January 2017 onwards (application period) after the completion of the physiological RCT published by our group in 2016 (implementation period). Data distribution were tested with Shapiro-Wilk analysis and

analyzed with parametric or non-parametric statistics, accordingly.

Primary end point, i.e., the intubation rate between groups, was analyzed with Fisher's exact test and Kaplan-Meier log-rank analysis. Survival at 2–6 months was also analyzed similarly, while other secondary measures were analyzed with non-parametric ANOVA or Mann-Whitney *U*-test as indicated. A *p* value < 0.05 was considered significant. Statistics were performed with SPSS 15.0 (SPSS inc, Chicago, IL, USA).

Results

Between January 1, 2015, and December 31, 2016, 145 children aging less than 5 years admitted with AHRF received NIV-PS as a first-line NRS according to clinical criteria. In this pool, 34 received NIV-PS with PICU ventilators and were included in the study. Other children received NRS via turbine-driven ventilators or variable flow-pressure generators and were excluded from the analysis because of the differences in circuit configuration. Thirty children treated with NIV-NAVA between January 1, 2017, and December 31, 2018, were included in the treatment group. Demographic characteristics between groups in the two periods were similar confirming the lack of change in local epidemiology (Table 1).

No differences were found between the two groups in age, weight, PIM2, physiological parameters, AHRF trigger, and comorbidity. The primary end-point (i.e., the intubation rate) was significantly lower in NIV-NAVA as compared to NIV-PS (4 out of 30 [13%] vs 16 out of 34 [47%], *p* = 0.006) and as reported in Fig. 1. Outcome measures are summarized in Table 2. F_{IO_2} and PEEP did not differ between the two cohorts (*p* = 0.084 and *p* = 0.070, respectively).

NIV-NAVA resulted in lower peak airway pressure as compared to NIV-PS (13 [12–14] vs 16 [13–17, 20] cmH_2O ; *p* = 0.003) with no differences in expiratory tidal volume. The main causes of NRS failure was hypoxia in both groups (14 [47%] vs 4 [13%], *p* = 0.040 for NIV-PS vs NIV-NAVA, respectively). The number of days on invasive mechanical ventilation was higher in NIV-PS compared to the NIV-NAVA group (7 [4–10] vs 3 [3, 4], *p* = 0.001). VAP rate and number of invasive devices per patients were lower in the NIV-NAVA group compared to the NIV-PS group (0 [0], vs. 5 [20%], *p* = 0.004, and 1 [0–2] vs 2[0.75–4], *p* = 0.032, respectively). PICU and hospital length of stay were found to be significantly shorter in the NIV-NAVA group compared to the NIV-PS group (5 [4–7] vs 9 [6–9.4] days, *p* = 0.002, and 8.5 [7–12] vs 12 [11–15] days, *p* = 0.013 respectively). No patient died neither during hospital stay, nor in the first 6 months after discharge.

Physiological parameters are summarized in Fig. 2. NIV-NAVA at 2 h resulted in increased $paO_2:F_{IO_2}$ (190

Table 1 Baseline characteristics of patients

	NIV-PS n = 34	NIV-NAVA n = 30	P value
Patients characteristics			
Male, n (%)	15 (45)	15 (30)	0.768
Age, mos	12, 6–21	11, 5–22	0.181
Weight, Kg	8, 6–12	8, 7–11	0.784
PIM2	1, 1–2	1, 1–1.5	0.569
paO ₂ :FiO ₂	140, 116–180	143, 119–171	0.805
paCO ₂ , mmHg	46, 40–52	45, 43–54	0.724
RR, breaths min ⁻¹	60, 55–66	60, 33–70	0.076
HR, beats min ⁻¹	134, 121–143	132, 120–133	0.079
MAP, mmHg	55, 50–56	55, 55–67	0.745
Causes of AHRF			
Viral infection, n (%)	15 (50)	17 (56)	0.694
Bacterial infection, n (%)	5 (17)	3 (10)	0.694
Comorbidities			
Mechanical ventilation at birth, n (%)	5 (17)	3 (10)	1
Epilepsy, n (%)	2 (7)	2 (7)	1
Uncorrected congenital heart disease, n (%)	1 (4)	2 (7)	1

NIV-PS noninvasive pressure support, NIV-NAVA noninvasive neurally adjusted ventilatory assist, PIM2 Pediatric Index Mortality 2, paO₂:FiO₂ arterial oxygen tension to inspired oxygen fraction ratio, paCO₂ arterial carbon dioxide tension, RR respiratory rate, HR heart rate, MAP mean arterial pressure, AHRF acute hypoxemic respiratory failure. Data are expressed as median [1–3 IQR]

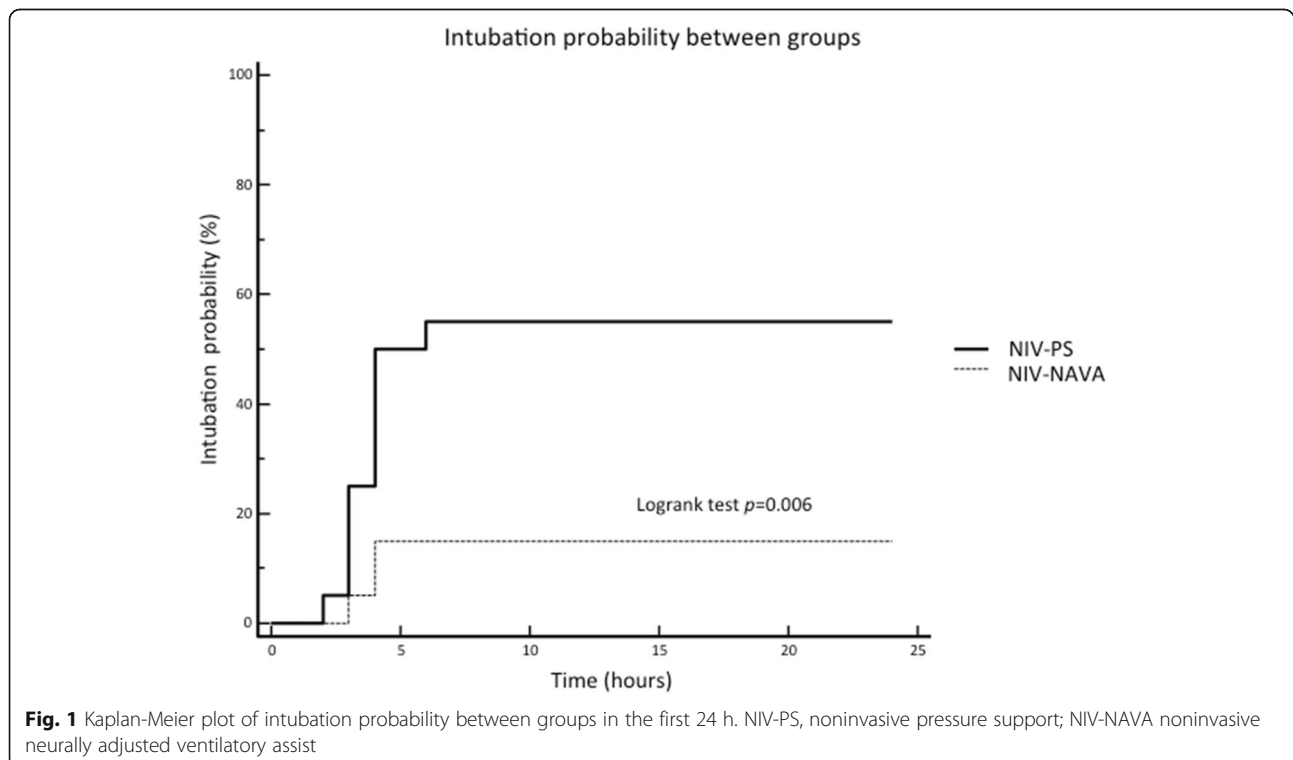


Table 2 Outcome variables

Variables	NIV-PS <i>n</i> = 34	NIV-NAVA <i>n</i> = 30	<i>P</i> value
FiO ₂	0.5, 0.4–0.55	0.5, 0.5–0.6	0.084
PEEP, cmH ₂ O	7, 6–8	7.5 (7–8)	0.070
Peak airway pressure, cmH ₂ O	16, 13–18	13, 12–14	0.003
Gain, mV	na	0.8, 0.7–1.2	
Pressurization time, ms	100, fixed	na	
Inspiratory trigger	5	0.5 mV	
Expiratory cycling, %	45, (35–55)	70% of Edi peak decay	
Tidal volume, ml/Kg/PBW	9, 8–9.5	8, 7–11	0.065
Intubation rate, <i>n</i> (%)	16(47)	4(13)	0.006
Causes to NRS failure			
Persistent Hypoxia, <i>n</i> (%)	14 (45)	4 (13)	0.040
Intolerance, <i>n</i> (%)	2 (5)	0 (0)	1
Days on invasive ventilation, <i>n</i>	7 (4–10)	3 (3–4)	0.001
VAP, <i>n</i> (%)	5 (20)	0 (0)	0.004
CLABSI, <i>n</i> (%)	1 (5)	0 (0)	1
Devices per pts, <i>n</i>	2 (0.75–4)	1 (0–2)	0.032
PICU LOS, days	8.5 (6–9.4)	5 (4–7)	0.002
Hospital LOS, days	12.3 (10–17)	8.5 (7–12)	0.013
PICU mortality, <i>n</i> (%)	0 (0)	0 (0)	1
Hospital mortality, <i>n</i> (%)	0 (0)	0 (0)	1
Two months mortality, <i>n</i> (%)	0 (0)	0 (0)	1
Six months mortality, <i>n</i> (%)	0 (0)	0 (0)	1

NIV-PS noninvasive pressure support, NIV-NAVA noninvasive neurally adjusted ventilatory assist, FiO₂ inspired oxygen fraction, PEEP positive end-expiratory pressure, PBW predicted body weight, PICU pediatric intensive care unit. Data are expressed as median [1–3 IQR]

[176–250] vs 142 [115–186], $p < 0.05$), decreased paCO₂ (40 [38–42] vs 45 [38–54] torr, $p < 0.05$), RR (40 [40–52] vs 60 [52–75] breaths min⁻¹, $p < 0.05$), and HR (120 [102–120] vs 139 [124–148] beats min⁻¹, $p < 0.05$) as compared to baseline. NIV-PS did not result in an early improvement in oxygenation, paCO₂, and RR.

All physiological parameters improved at 24 h compared to baseline in nonintubated patients without differences between the 2 groups.

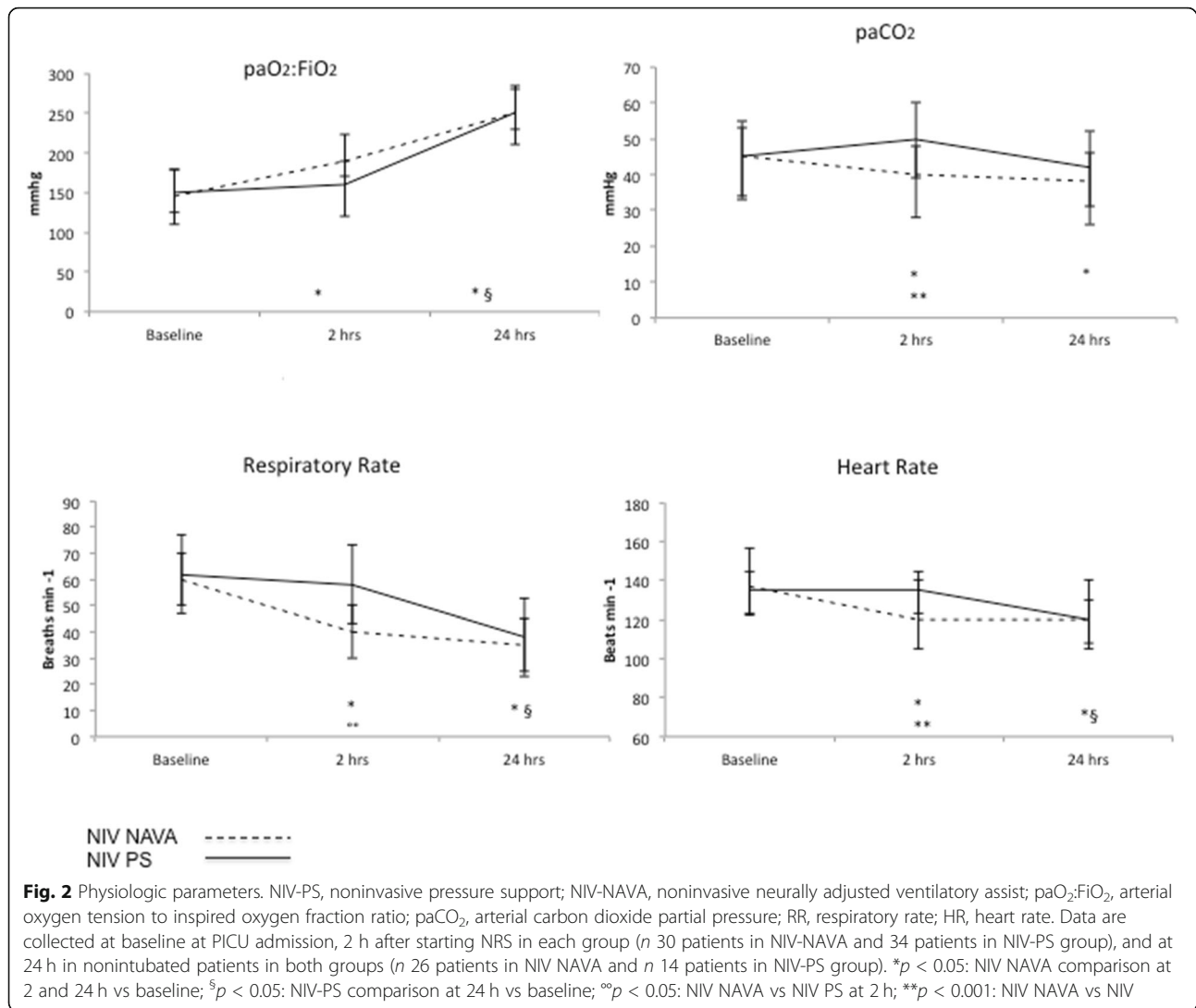
Discussion

The major findings of the study are that NIV-NAVA was associated with lower intubation rate, lower number of invasive devices, shorter PICU and hospital length of stay, and an early improvement in physiological parameters compared to NIV-PS. Besides, NIV-NAVA and NIV-PS were found to be equally safe and no major adverse events due to technologic failure were reported across the entire hospital treatment.

To the best of our knowledge, this is the first pediatric study evaluating the early elective application of NIV-NAVA in a long-term treatment in comparison with NIV-PS. To date, no pediatric studies are published

showing advantages of NAVA on long terms outcomes and it is not clear if a better synchronization during NRS ultimately leads to improved clinical outcomes. Data from the adult critical care population showed that a higher AI was associated with longer duration of mechanical ventilation as well as ICU and hospital mortality [23].

During the early phase of pediatric AHRE, the appropriate patient-ventilator interaction is the key point to obtain an efficient ventilatory support [16, 17, 20, 24, 25]. Previous short-term pediatric physiological studies reported a poor interaction during NIV-PS showing an AI up to 45%, a value largely exceeding the 10% cut-off currently defining severe patient-ventilator asynchrony [16, 17, 20]. In these studies, the more frequent asynchronies were ineffective triggering, premature/late cycling, and autotriggering. High AI may be due to the difficult interaction between the intrinsic characteristics of pediatric breathing pattern (low tidal volume, weak inspiratory effort, high respiratory rate, and short neural timing) and the technical performances of PICU ventilators (inspiratory trigger sensitivity, expiratory cycling setting, and leaks compensation software) [24, 25].



The technical characteristics and performances of PICU ventilators likely play a major role in determining patient-ventilator interactions. Current PICU ventilator technology, especially when large leaks are present, is often unable to detect the small variation in inspiratory flow, to allow a fast response in terms of inspiratory and expiratory cycling and to compensate for leaks around the interface.

In a recent bench-model study comparing different PICU ventilators (neonatal with proximal flow sensor and leaks compensation software, adult ventilators with or without proximal flow sensor and leaks compensations software), Vignaux et al. reported that not all ventilators performed equally in terms of delivery of tidal volume and inspiratory and expiratory delays in the presence of leaks [26].

Due to the very short pediatric neural times, the ability of the machine to optimize the patient-ventilator

synchronization time by reducing the mechanical delays is crucial to deliver the support.

In the study by Vignaux and colleagues, only few neonatal ventilators equipped with enough sensitive inspiratory trigger technology were found to be able to maintain an inspiratory delay below 80 ms. Moreover neonatal ventilators demonstrated to cope better with leaks as compared to adults ventilators adapted to neonatal mode, both in terms of trigger sensitivity and cycling [26]. Besides, Vignaux et al. found that in ICU ventilator the higher the respiratory rate, the higher the amount of air trapping [27].

NAVA is a mode of ventilation where the patient's own respiratory drive controls the timing and amount of support provided and it has been shown to optimize synchronization in preterms, full-term neonates, and small children even in the presence of large air leaks [13–17, 20, 28–30].

A correct position of the esophageal catheter for a reliable Edi signal is mandatory when using NAVA, as ventilator activation and cycling off are under direct control of Edi signal. Specific signal processing algorithms (double subtraction technique) are now incorporated in NAVA technology to achieve the highest signal to noise ratio. This allows to better trigger the ventilator, to compensate for electrodes-to-muscle distance, and to remove interferences generated from activity from intercostal or abdominal muscles and signals from ICU devices [30].

So far only three studies report data on NIV-NAVA delivered in AHRF children [16, 17, 20].

Vignaux et al. found that that NIV-NAVA resulted in shorter mechanical delays and lower Asynchrony Index (AI) (2.3% [0.7–5] vs 40% [28–65]) with the most frequent asynchronies during NIV-PS being ineffective efforts, autotriggering, and double triggering. Interestingly, the use of NIV-NAVA was associated with a reduction in all types of asynchronies [16]. Ducharme Crevier et al. reported 13 patients (3 days to 18 years) with heterogeneous AHRF where NIV was delivered both with PICU and turbine-driven ventilators. During NIV-NAVA, they found 8% (6 to 10) of total time spent in asynchrony compared to 27% (19 to 56) and 32% (21 to 38) in NIV-PS before and after NIV-NAVA, respectively. NIV-NAVA resulted in a reduction in inspiratory and expiratory delays, ineffective efforts, and autotriggering [20].

In a recent pediatric physiological RCT conducted in eighteen AHRF children, early delivered NIV-NAVA resulted in a significant reduction in AI. Indeed, NIV-NAVA led to a drastic reduction in ineffective efforts, improved interaction by reducing inspiratory and expiratory delays, and increased the synchronization time, thus significantly improving the neuroventilatory coupling [17].

These results suggest that early NIV-NAVA could be more efficient in delivering NRS compared to flow-cycled pressure support in the setting of moderate pediatric AHRF.

In the abovementioned physiologic studies, NIV-NAVA was associated with a reduction in mechanical delays and with a longer synchronization time, thus leading to a more efficient patient ventilator synchronization. In conclusions, similar to studies conducted in adults, all pediatric trials showed that patient-ventilator interaction is unequivocally improved during NAVA. What are missing so far are studies evaluating the long-term effects of NAVA on clinical relevant outcomes.

The current study suggests that NAVA could reduce intubation rate in the first 24 h from PICU admission compared to conventional ventilation. This result is corroborated by the concomitant improvement in physiologic parameters during NIV-NAVA. We can therefore argue that inspiratory and expiratory neural triggers

associated with ventilator-delivered pressure controlled by EAdi improved patient machine synchronization during NIV-NAVA. This leads to better patient's tolerance and more efficient support in respiratory function generating a reduced rate of tracheal intubation and improved hospital outcomes.

This study has several limitations that need to be addressed together with the interpretation of our data which should be done with caution.

First, this is a single center, retrospective study. The study design does not allow for undetected bias contributing to differences between variables. However because there was no time gap between the two groups and the duration of the study is relatively short, the cohorts were well matched for possible confounding variables. Treatments were also delivered according to protocolized PICU procedures that did not change during the study period [31, 32].

Second, biases related to worsening or improving in AHRF as well as the possible effect of sedation may be present and have to be taken into account in evaluating the change in gas exchange and breathing pattern.

Finally, NAVA technology is expensive and requires an extended learning curve at bedside, and whether an optimal synchronization may lead to a reduced intubation rate and better PICU outcomes remains to be confirmed by an adequately powered prospective randomized controlled trial.

Conclusion

In this study, NIV-NAVA delivered as first-line NRS in pediatric moderate AHRF of infectious origin was associated with a lower intubation rate, shorter PICU and hospital length of stay, and early improvement of physiologic parameters compared to NIV-PS. Further data from prospective RCTs are warranted to confirm these preliminary results.

Abbreviations

AHRF: Acute hypoxemic respiratory failure; CLABSI: Central line-associated bloodstream infection; EAdi: Electrical diaphragm activity; FiO₂: Inspired oxygen fraction; HR: Heart rate; LOS: Length of stay; MV: Mechanical ventilation; NAVA: Neurally adjusted ventilatory assist; NIV-NAVA: Noninvasive NAVA; NIV-PS: Noninvasive pressure support ventilation; NRS: Noninvasive respiratory support; paCO₂: Partial arterial carbon dioxide tension; paO₂/FiO₂: Peripheral oxygen saturation to inspired oxygen fraction ratio; PEEP: Positive end expiratory pressure; PICU: Pediatric intensive care unit; PIM: Pediatric Index Mortality; RR: Respiratory rate; VAP: Ventilator-acquired pneumonia

Acknowledgements

The authors thank the nurses and all the staff of the PICU for patient managements and their valuable help in data collection.

Authors' contributions

CG conceptualized and designed the study, drafted the initial manuscript, and approved the final manuscript as submitted. DDL conceptualized and designed the study, drafted the initial manuscript, and approved the final manuscript as submitted. CE conceptualized and designed the study, drafted

the initial manuscript, and approved the final manuscript as submitted. SCS reviewed and revised the manuscript and approved the final manuscript as submitted. MT reviewed and revised the manuscript and approved the final manuscript as submitted. LT reviewed and revised the manuscript and approved the final manuscript as submitted. GC conceptualized and designed the study, drafted the initial manuscript, and approved the final manuscript as submitted. CG conceptualized and designed the study, drafted the initial manuscript, and approved the final manuscript as submitted.

Funding

There is no funding source.

Declarations

Ethics approval and consent to participate

The study was approved by the local Ethical Committee. The local Ethical Committee waived the need for informed consent, as this was a retrospective analysis and data were managed according to hospital privacy policies.

Competing interests

The authors declare that they have no conflict of interest.

Author details

¹Pediatric Intensive Care Unit, Department of Anesthesia, Intensive Care and Emergency, Fondazione IRCCS Ca' Granda, Ospedale Maggiore Policlinico, Milan, Italy. ²Division of Pediatrics and Neonatal Critical Care, "A.Beclere" Medical Center, South Paris University Hospitals, APHP and South Paris-Saclay University, Paris, France. ³Department of Pathophysiology and Transplantation, University of Milan, Milan, Italy. ⁴Department of Surgical, Oncological and Oral Science (Di.Chir.On.S.), Section of Anesthesia, Analgesia, Intensive Care and Emergency, Policlinico Paolo Giaccone, University of Palermo, Palermo, Italy. ⁵Dept of Anesthesiology and Intensive Care Medicine, Catholic University of Rome, A. Gemelli University Hospital, Rome, Italy.

Published online: 01 September 2021

References

- Balfour Lynn RE, Marsh G, Gorayi D et al (1999) Non-invasive ventilation for children with acute respiratory failure in the developing world: literature review and implementation example. *Paediatr Respir Rev* 15:181–187
- Murthy S, Kissoon N (2014) Management of severe viral infections in the pediatric intensive care unit. *Journal of Pediatric Intensive Care* 3(4):205–216. <https://doi.org/10.3233/PIC-14103>
- Bontemps STH, van Woensel JB, BOS AP (2013) Acute viral lower respiratory tract infections in paediatric intensive care patients. *Netherlands J Crit Care* 17:13–18
- Patria MF, Chidini G, Ughi L, Montani C, Prandi E, Galeone C, Calderini E, Esposito S (2013) Ventilator associated pneumonia in an Italian Pediatric Intensive Care Unit: a prospective study. *World J Pediatr* 9(4):365–368. <https://doi.org/10.1007/s12519-013-0444-y>
- Ganu SS, Gautam A, Wilkins B, Egan J (2012) Increase in use of non-invasive ventilation for infants with severe bronchiolitis is associated with decline in intubation rates over a decade. *Intensive Care Medicine* 38(7):1177–1183. <https://doi.org/10.1007/s00134-012-2566-4>
- Tassiou I, Papazoglou K, Patsoura A et al (2011) Non invasive ventilation in a pediatric intensive care unit. *Pediatric Critical Care Medicine* 12:3 Suppl. 1 (A129)
- Gregoretti C, Pelosi P, Chidini G, Bignamini E, Calderini E (2010) Noninvasive ventilation in pediatric intensive care. *Minerva Pediatr* 62(5):437–458
- Essouri S, Chevret L, Durand P, Haas V, Fauroux B, Devictor D (2006) Non-invasive positive pressure ventilation: five years of experience in a pediatric intensive care unit. *Pediatr Crit Care Med* 7(4):329–334. <https://doi.org/10.1097/01.PCC.0000225089.21176.0B>
- Yanez LJ, Yunge M, Emilfork M et al (2008) A prospective, randomized, controlled trial of noninvasive ventilation in pediatric acute respiratory failure. *Pediatr Crit Care Med* 9(5):484–489. <https://doi.org/10.1097/PCC.0b013e318184989f>
- Bernet V, Hug M, Frey B (2005) Predictive factors for the success of noninvasive mask ventilation in infants and children with acute respiratory failure. *Pediatr Crit Care Med* 6(6):660–664. <https://doi.org/10.1097/01.PCC.0000170612.16938.F6>
- Alander M, Peltoniemi O, Pokka T et al (2012) Comparison of pressure-, flow-, and NAVA-triggering in pediatric and neonatal ventilatory care. *Pediatr Pulmonol* 47(1):76–83. <https://doi.org/10.1002/ppul.21519>
- Piquillod L, Vignaux L, Bialais E et al (2011) Neurally adjusted ventilatory assist improves patient-ventilator interaction. *Intensive Care Med* 37(2):263–271. <https://doi.org/10.1007/s00134-010-2052-9>
- Langer T, Baio S, Chidini G, Marchesi T, Grasselli G, Pesenti A, Calderini E (2019) Severe diaphragmatic dysfunction with preserved activity of accessory respiratory muscles in a critically ill child: a case report of failure of neurally adjusted ventilatory assist (NAVA) and successful support with pressure support ventilation (PSV). *BMC Pediatr* 19(1):155. <https://doi.org/10.1186/s12887-019-1527-2>
- Breatnach C, Conlon NP, Stack M, Healy M, O'Hare BP (2010) A prospective crossover comparison of neurally adjusted ventilator assist and pressure support ventilation in a pediatric and neonatal intensive care unit population. *Pediatric Crit Care Med* 11(1):7–11. <https://doi.org/10.1097/PCC.0b013e3181b0630f>
- Bengtsson JA, Edberg KE (2010) Neurally adjusted ventilatory assist in children: an observational study. *Pediatric Crit Care Med* 11(2):253–257. <https://doi.org/10.1097/PCC.0b013e3181b0655e>
- Vignaux L, Grazioli S, Piquillod L et al (2013) Patient-ventilator asynchrony during noninvasive pressure support ventilation and neurally adjusted ventilatory assist in infants and children. *Pediatr Crit Care Med* 14(8):e357–e364. <https://doi.org/10.1097/PCC.0b013e3182917922>
- Chidini G, De Luca D, Conti G et al (2016) Early noninvasive Neurally Adjusted Ventilatory Assist versus noninvasive flow-triggered pressure support ventilation in pediatric acute respiratory failure: a physiologic randomized controlled trial. *Ped Crit Care Med* 17(11):e487–e495. <https://doi.org/10.1097/PC0000000000000947>
- Carlucci A, Schreiber A, Mattei A, Malovini A, Bellinzi J, Ceriana P, Gregoretti C (2013) The configuration of bilevel circuit may affect compensation for nonintentional leaks during volume targeted ventilation. *Intensive Care Med* 39(1):59–65. <https://doi.org/10.1007/s00134-012-2696-8>
- Ogrinc G, Davies L, Goodman D, Batalden P, Davidoff F, Stevens D (2016) Batalden P, Davidoff F, Stevens D. SQUIRE 2.0 (Standards for Quality Improvement Reporting Excellence): revised publication guidelines from a detailed consensus process. *BMJ Qual Saf* ;25:986–992. doi:<https://doi.org/10.1136/bmjqs-2015-004411>, 12.
- Ducharme Crevier L, Beck J, Essouri S et al (2015) Neurally Adjusted Ventilatory Assist (NAVA) allows patients-ventilator synchrony during pediatric noninvasive ventilation: a crossover physiological study. *Crit Care* 19(1):44. <https://doi.org/10.1186/s13054-015-0770-7>
- Venn RM, Hell J, Grounds RM (2000) Respiratory effects of dexmedetomidine in the surgical patients requiring intensive care. *Crit Care* 4(5):302–308. <https://doi.org/10.1186/cc712>
- Center for Disease Control and Prevention. Atlanta (GA): Center for Disease Control and Prevention (2017). National Healthcare Safety Network (NHSN) Patient Safety component manual 2017
- Blanch L, Villagra A, Sales B, Montanya J, Lucangelo U, Luján M, García-Esquirol O, Chacón E, Estruga A, Oliva JC, Hernández-Abadía A, Albaiceta GM, Fernández-Mondejar E, Fernández R, Lopez-Aguilar J, Villar J, Murias G, Kacmarek RM (2015) Asynchronies during mechanical ventilation are associated with mortality. *Intensive Care Med* 41(4):633–664. <https://doi.org/10.1007/s00134-015-3692-6>
- Kallio M, Peltoniemi O, Anttila E, Pokka T, Kontiokari T (2015) Neurally Adjusted Ventilator Assist (NAVA) in pediatric intensive care. A randomized Controlled trial. *Pediatr Pulmonol* 50(1):55–62. <https://doi.org/10.1002/ppul.22995>
- Baudin F, Pouyau R, Cour Andlauer F et al (2014) Neurally Adjusted Ventilatory Assist (NAVA) reduces asynchrony during noninvasive ventilation for severe bronchiolitis. *Pediatr Pulmonol* 50(12):1320–1327. <https://doi.org/10.1002/ppul.23139>
- Vignaux L, Piquillod L, Tourneaux P et al (2014) Neonatal and adult ICU ventilators to provide ventilation in neonates, infants and children: a bench model study. *Respir Care* 59(10):1463–1475. <https://doi.org/10.4187/respcare.02540>
- Vignaux L, Vargas F, Roeseler J, Tassaou D, Thille AW, Kossowsky MP, Brochard L, Jolliet P (2009) Patient ventilator asynchrony during

noninvasive ventilation for acute respiratory failure: a multicenter study. *Intensive Care Med* 35(5):840–846. <https://doi.org/10.1007/s00134-009-1416-5>

28. Piastra M, De Luca D, Costa R, et al (2014) Neurally Adjusted Ventilatory Assist vs Pressure Support Ventilation in infants recovering from severe acute respiratory distress syndrome: a nested study. *J Crit Care* 29:312.e1–5.
29. Longhini F, Ferrero F, De Luca D et al (2014) Neurally Adjusted Ventilatory Assist in preterm neonates with Acute Respiratory Failure. *Neonatology* 107: 60–67
30. Beck J, Reilly M, Grasselli G, Mirabella L, Slutsky AS, Dunn MS, Sinderby C (2009) Patient-ventilator interaction during Neurally adjusted ventilator assist in very low birth weight infants. *Pediatr Res* 65(6):663–668. <https://doi.org/10.1203/PDR.0b013e31819e72ab>
31. Placzek M, Friede T (2017) Clinical trials with nested subgroups: analysis, sample size determination and internal pilot studies. *Stat Methods Med Res* <https://doi.org/10.1177/0962280217696116>
32. Pang D (1999) A relative power table for nested matched case control studies. *Occup Environ Med* 5

Publisher's Note

Springer Nature remains neutral with regard to jurisdictional claims in published maps and institutional affiliations.

Ready to submit your research? Choose BMC and benefit from:

- fast, convenient online submission
- thorough peer review by experienced researchers in your field
- rapid publication on acceptance
- support for research data, including large and complex data types
- gold Open Access which fosters wider collaboration and increased citations
- maximum visibility for your research: over 100M website views per year

At BMC, research is always in progress.

Learn more biomedcentral.com/submissions

