

From drop impact to fog harvesting using hydrophobic meshes

Raziyeh Akbari^{1,*}, Pegah Sartipizadeh², Yu Wei^{1,3}, Mohammad Reza Mohammadzadeh², Carlo Antonini¹

¹ Department of Materials Science, University of Milano-Bicocca, via R. Cozzi 55, 20125 Milano, Italy

² Supermaterials Research Laboratory (SRL), Department of Physics, University of Tehran, North Kargar Ave, P.O. Box 14395-547, Tehran, Iran

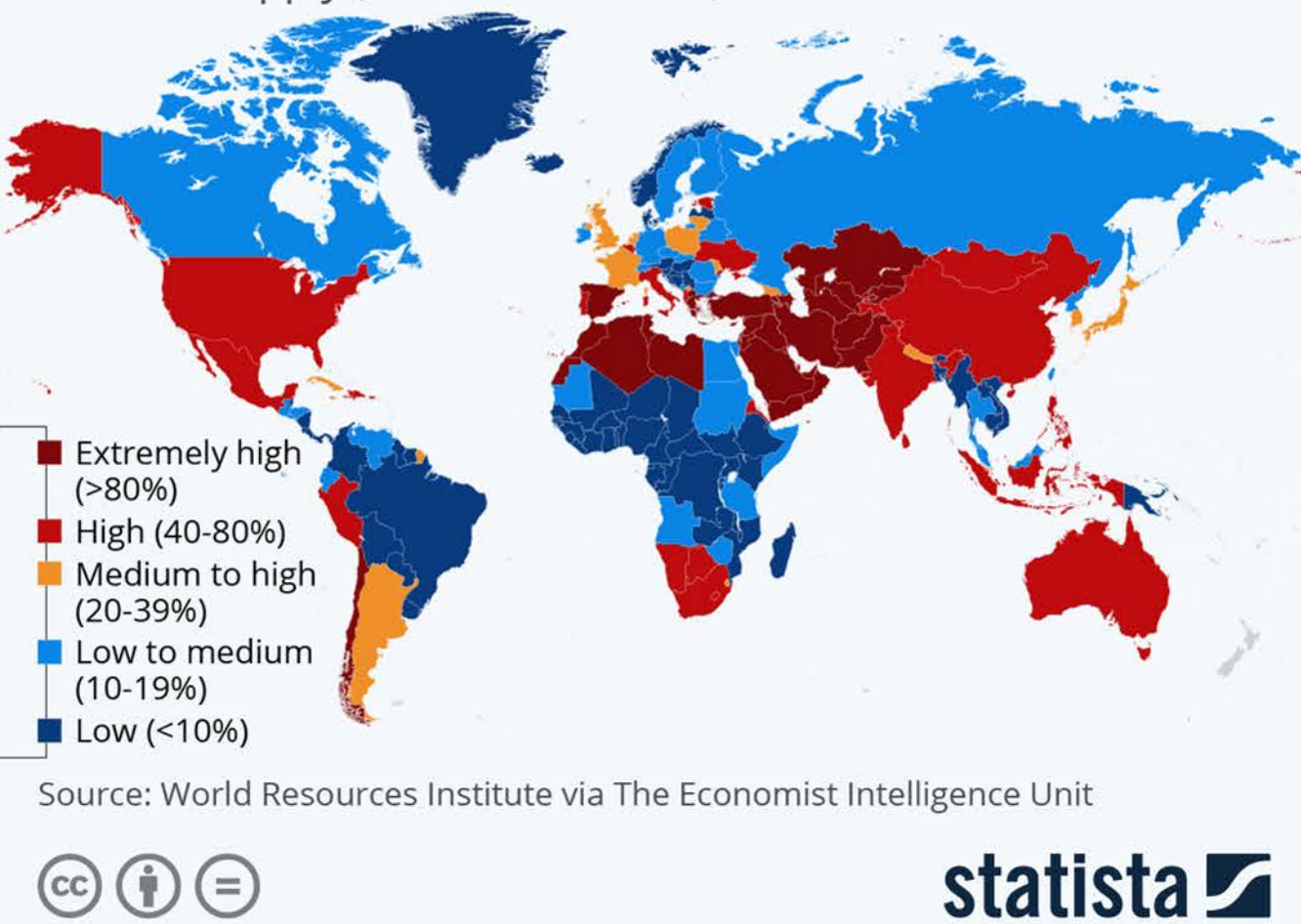
³ School of Aerospace, Xi'an Jiaotong University, Xi'an 710049, P. R. China

* raziyeh.akbari@unimib.it

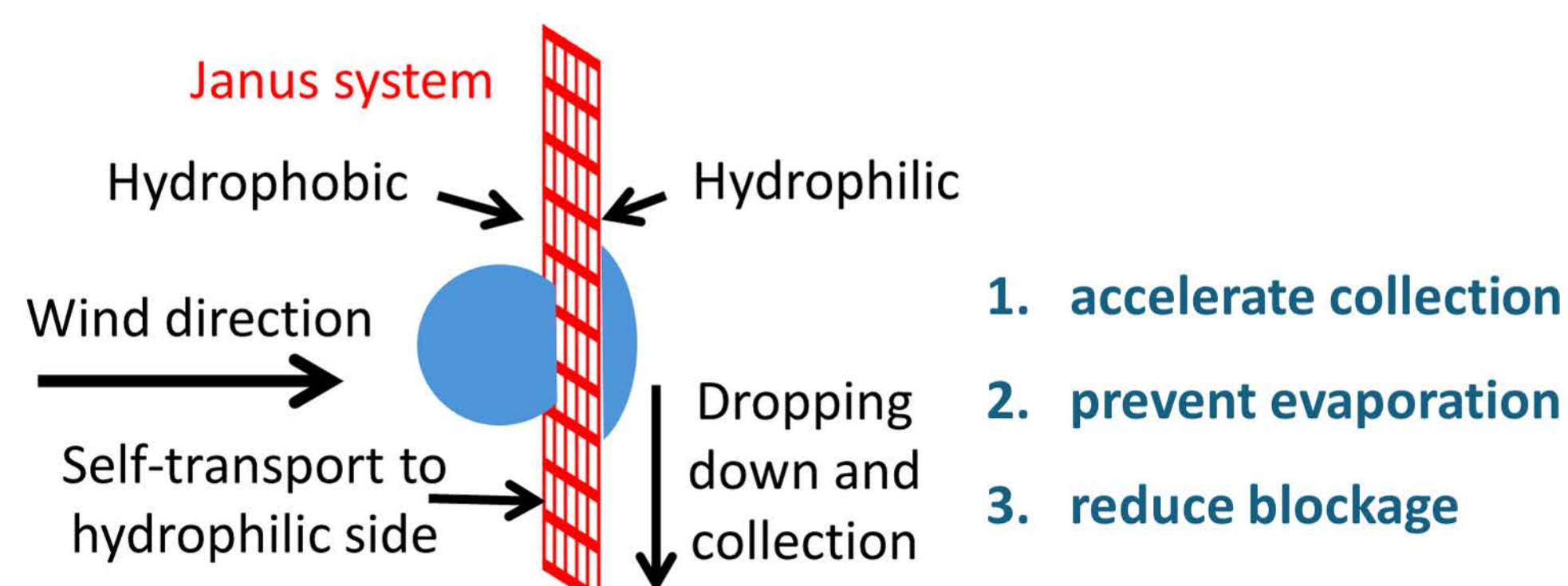
Introduction

Where Water Stress Will Be Highest by 2040

Projected ratio of water withdrawals to water supply (water stress level) in 2040



WaterHaB: Engineering bio-inspired atmospheric Water Harvesters through fog collection with Badgir architecture



Issues:

- (i) re-entrainment of collected droplets into the prevalent wind
- (ii) mesh opening blockage

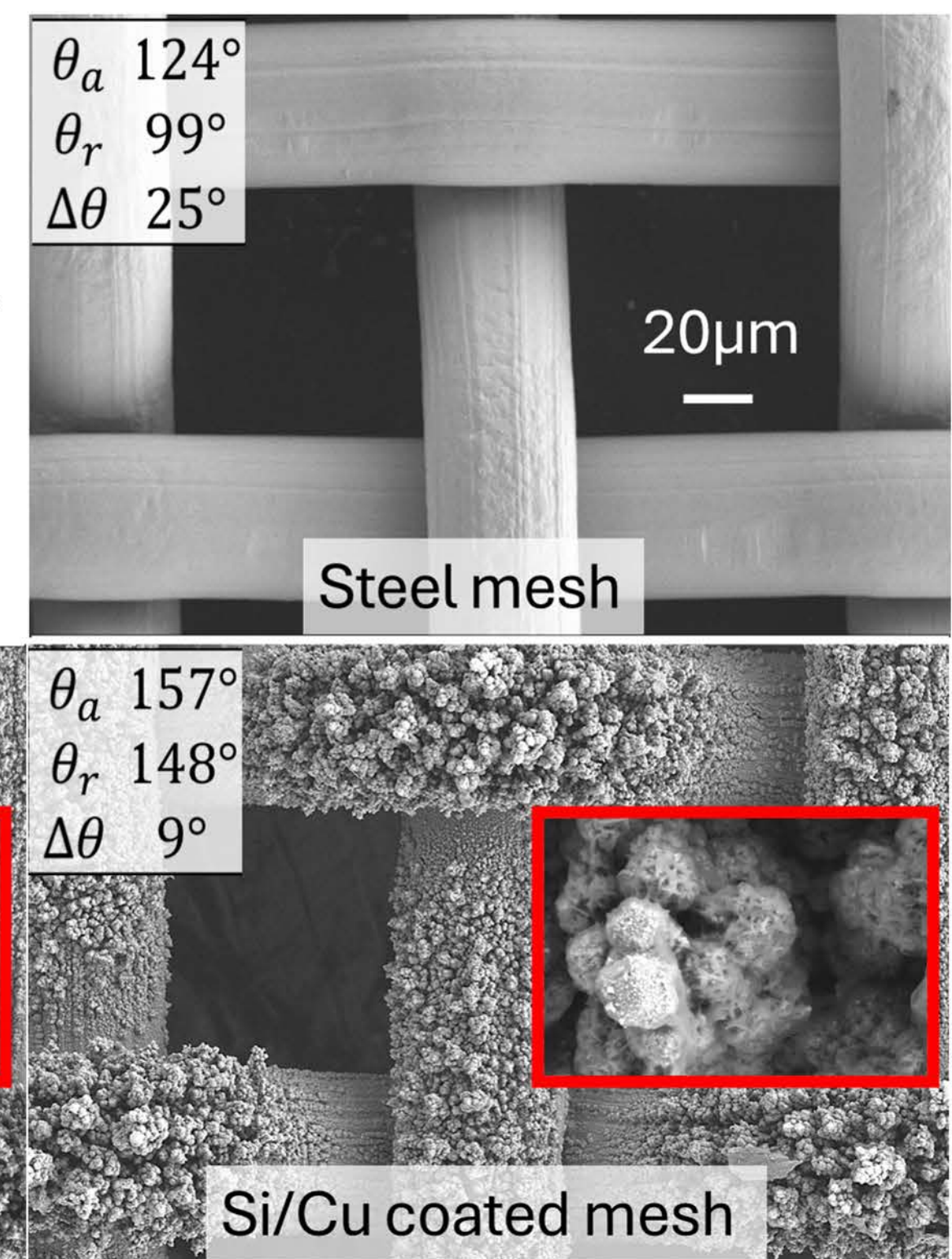
Sample preparation

Substrate: stainless steel mesh

Coatings:

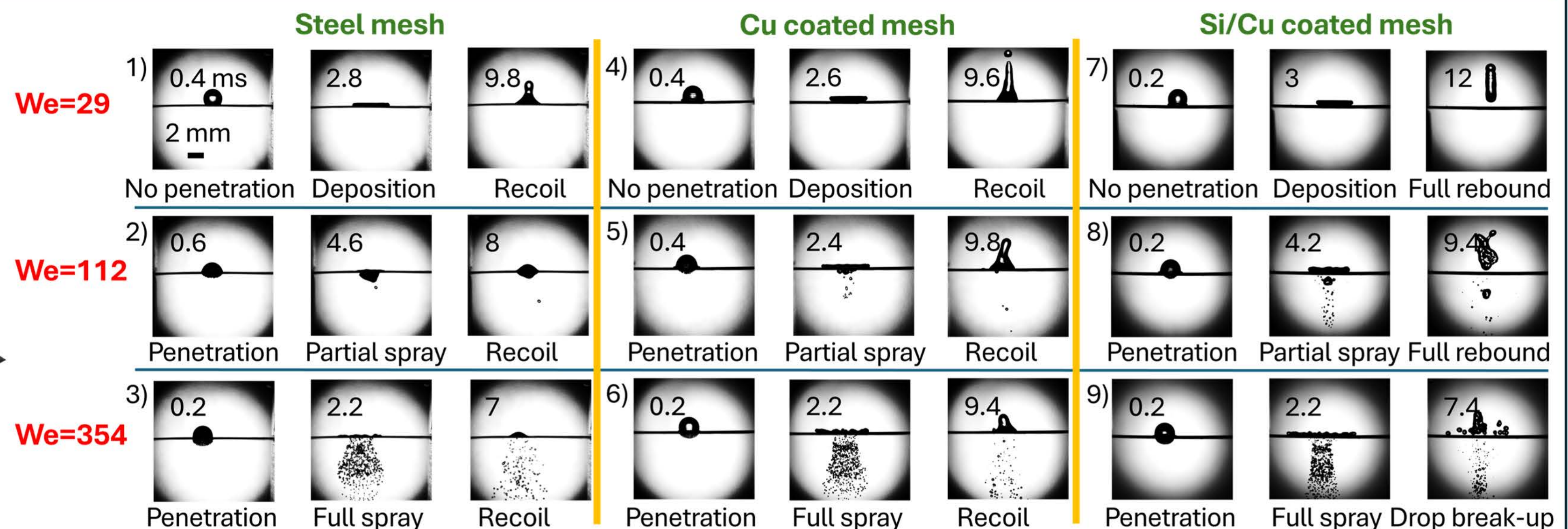
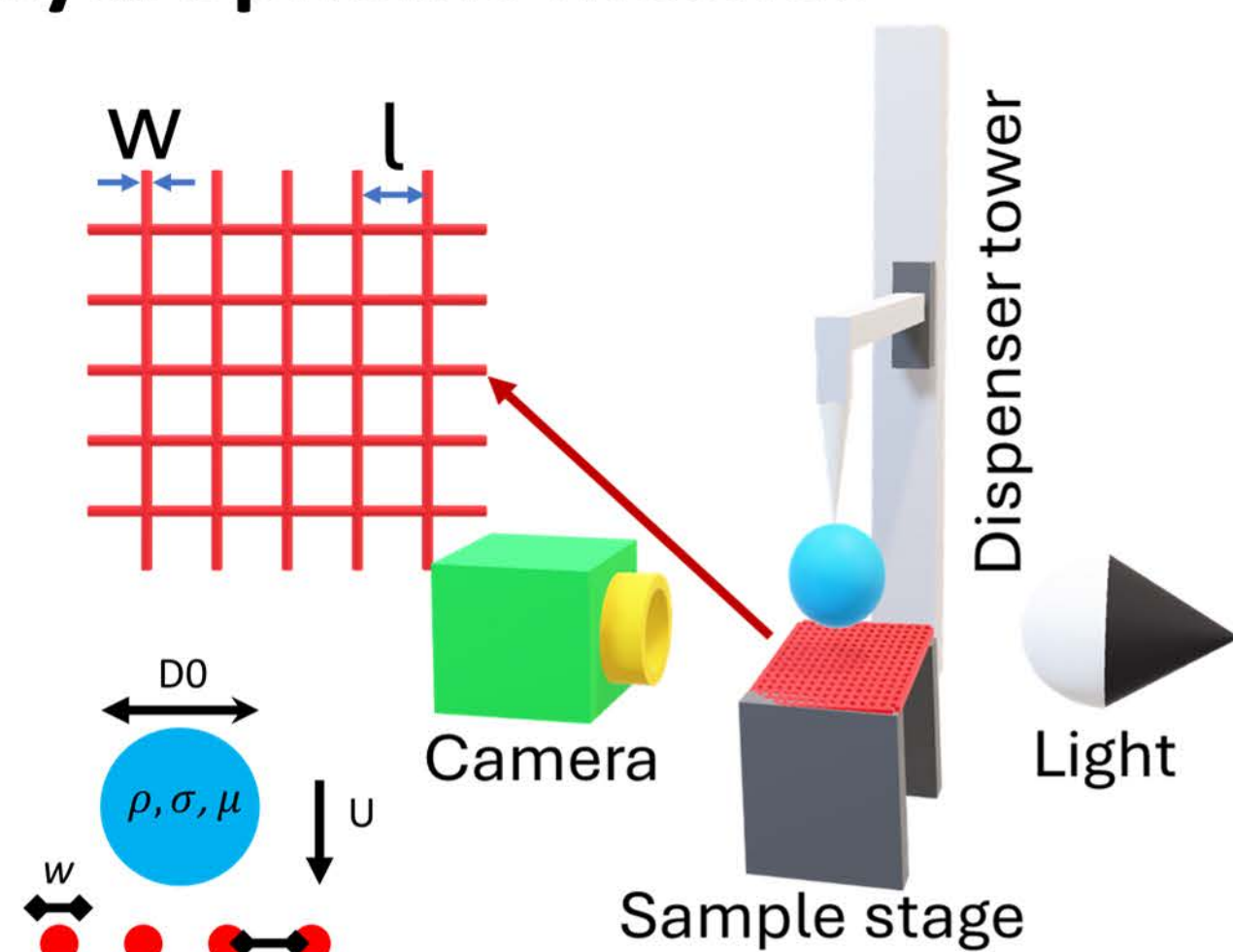
1. Electrodeposition of copper
2. Hydrophobization

with PFS or HMDS

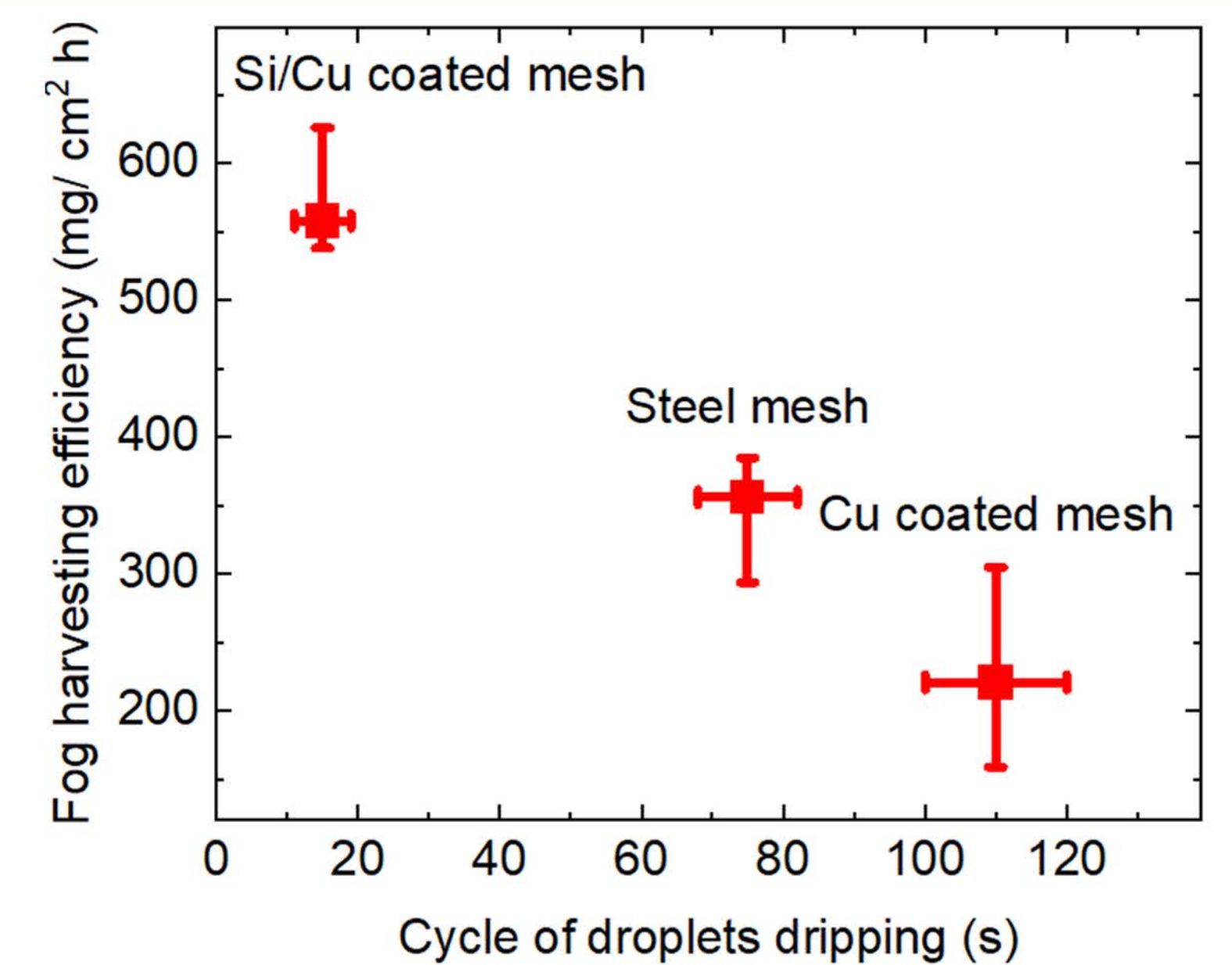
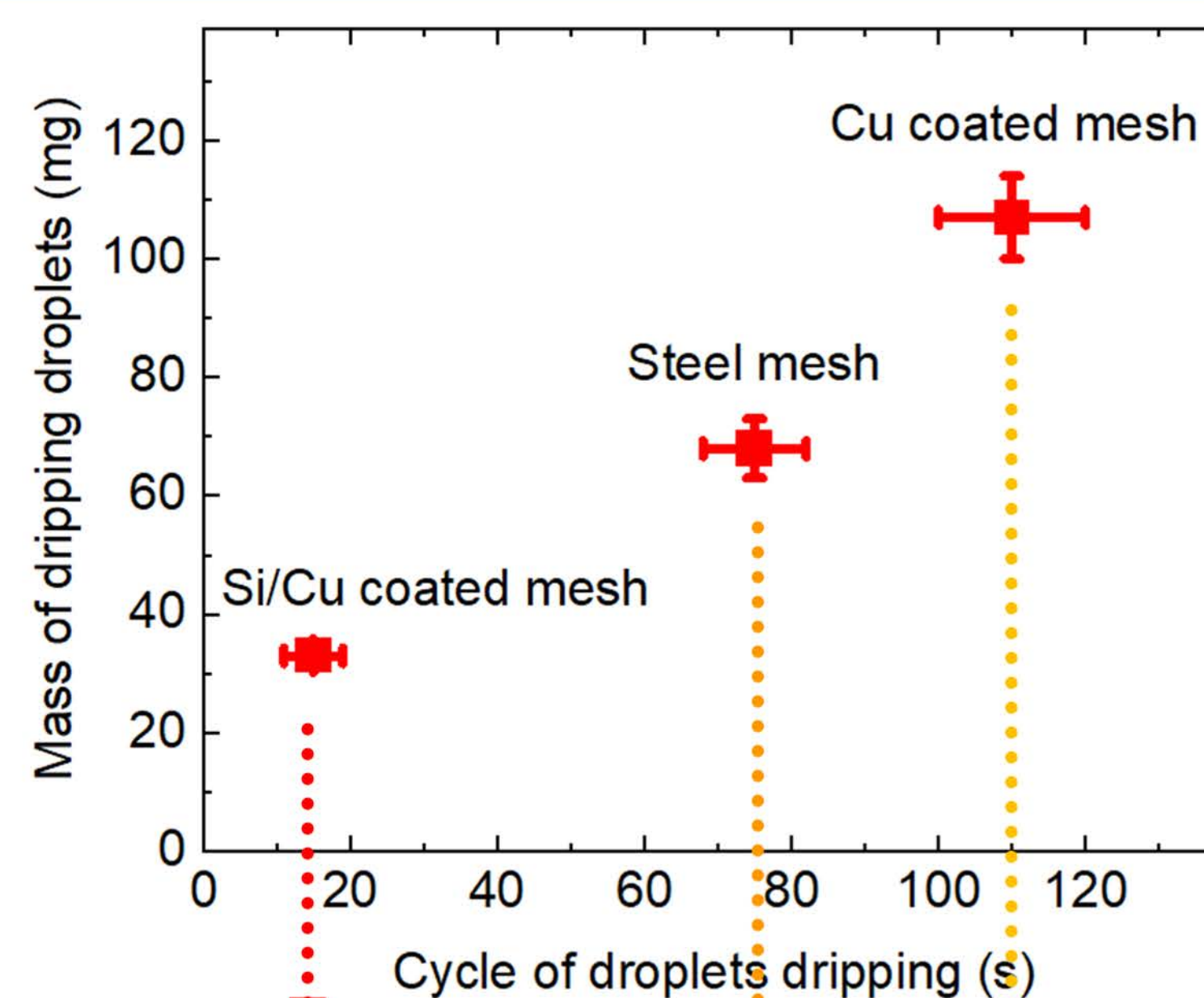
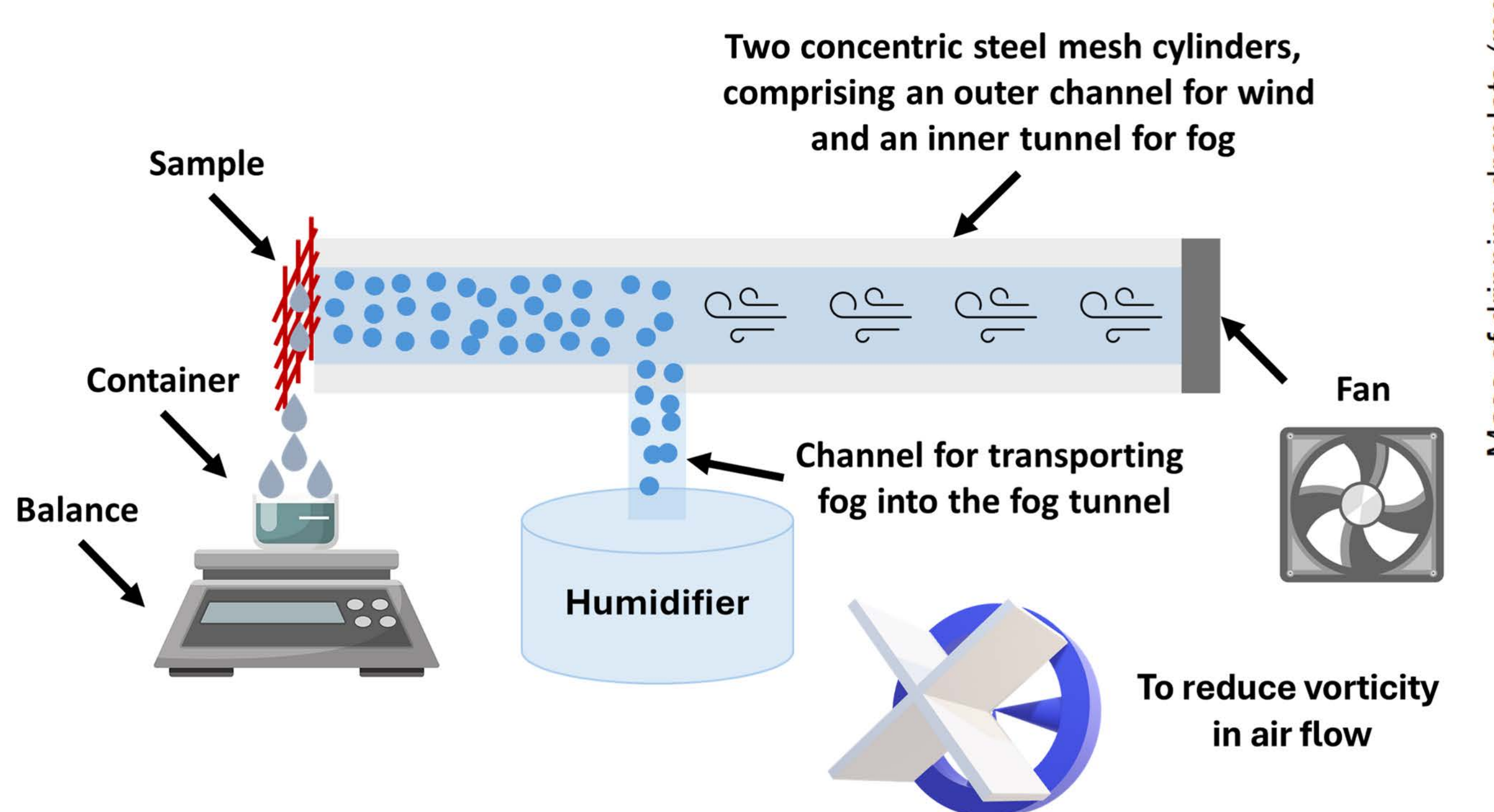


Drop impact outcomes on hydrophobic meshes

Droplet volume (μl)	5.7
Droplet diameter (mm)	2.06
Initial drop velocity (m/s)	[0.4, 3.7]
$We = \rho D_0 U^2 / \sigma$	[5, 292]
Image resolution ($\mu\text{m}/\text{px}$)	20
Frame rate (frame/s)	5000



Water harvesting through hydrophobic meshes



Fog harvesting efficiency =

$$\frac{\text{amount of collected water}}{\text{test duration} \times \text{mesh surface area}}$$

40% higher water collection efficiency comparing to steel mesh

References: 1. Akbari et al., Phys. Fluids **36**, (2024) 2. Antonini et al., Phys. Fluids **24**, (2012) 3. Reyssat et al., Europhys. Lett. **74**, 306 (2006) 4. Wang et al., Phys. Rev. Fluids **5**, (2020) 5. Fedorchenko et al., Phys. Fluids **16**, 11 (2004) 6. Xu et al., Exp. Therm. Fluid Sci. **82**, 83 (2017)