

TO Africa. Health, Migration, Society

The Intervention of Doctors with Africa CUAMM NGO in Mozambique, between Health System Strengthening and Tackling Emergencies.

Focusing on Cabo Delgado Province



- National Capital (1,800,000 in 2009)
- over 200,000
- over 100,000
- over 25,000
- other main city
- other city
- Chief town of province



Mozambique Profile

- Independent since 1975 – Civil war 1977/1992
- Population 30,06 M / 3 M in Cabo Delgado
- Average age: 17,3
- Life expectancy 56 men / 60 women
- Literacy rate; 47% (28% women / 60% men)
- HIV+ prevalence: 13,6% / 16% (17,3% among 15-49 age group)
- Maternal mortality rate 489/100,000
- U5 mortality 76/1,000
- Neonatal Mortality (within 28 days) 57/1,000
- Mz is 180th /188 Countries – UN Human Development Index

Covid-19 Outbreak in Mozambique

The 31st of March the President of Mz declared the State of Emergency

Data updated at 21st, June

Testados: 23,760

Em quarentena: 19,356

Positivos Covid-19: 733

Negativos: 23,027

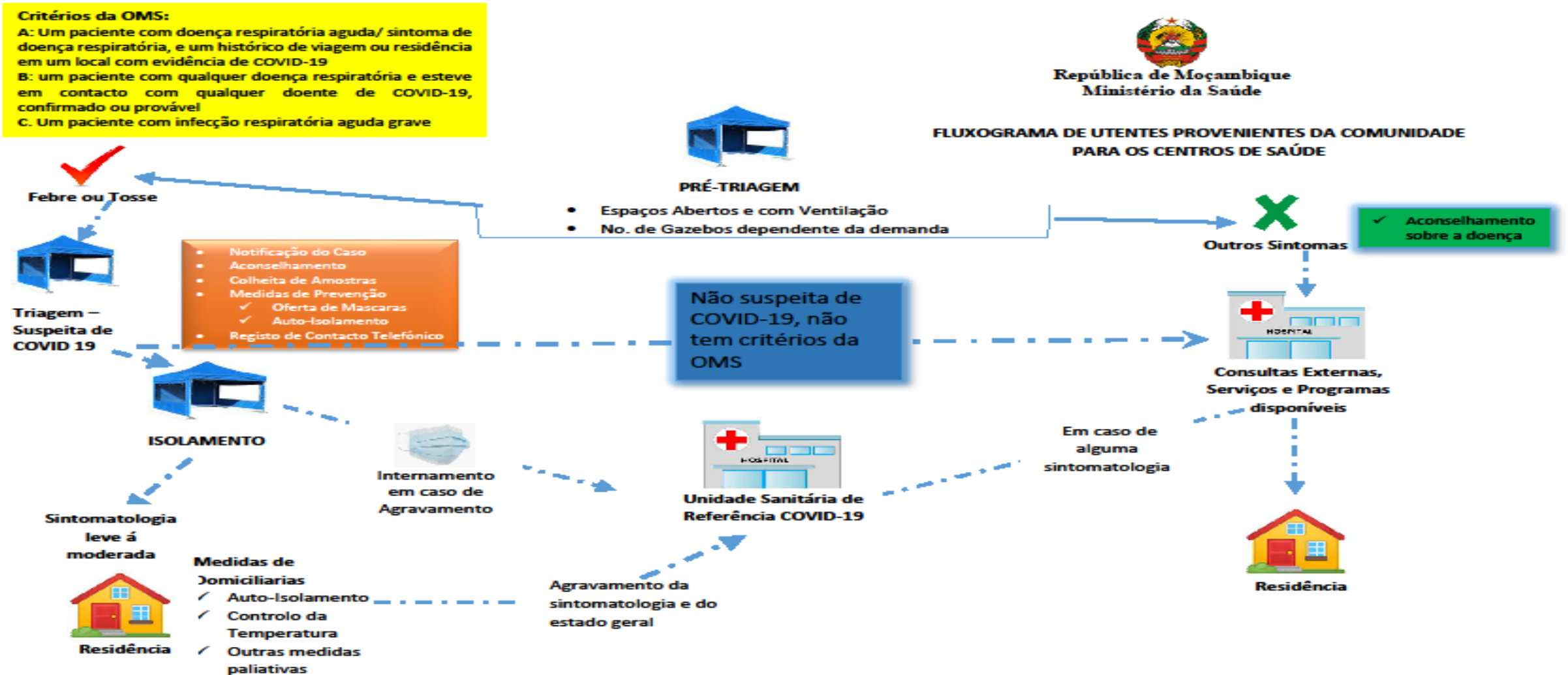
Obitos: 5

Recuperados: 181

CUAMM intervention on Covid-19

- Member of Technical Working Group at Ministry of Health for the Response to Covid-19 Outbreak for which concerns:
- Epidemiological Surveillance /Case Management
- Community Health Task Force
- Working in 6 provinces / 23 Health Facilities
- 500 Community Health Workers on the ground
- Radio & Communication Campaigns in 7 languages
- Supporting District Health Authorities in planning & data collection
- Mobile-based follow up system
- Operational Research

Community Vigilance Fluxogram



COVID-19 O QUE NÃO FAZER



O QUE FAZER

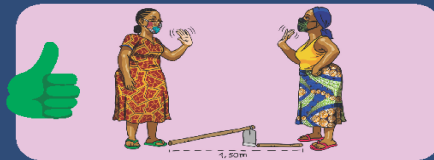


Illustration: Z. Damasceno

Parceiros do Ministério da Saúde na resposta à COVID-19:



Apoio e informação
www.covid19.ins.gov.mz

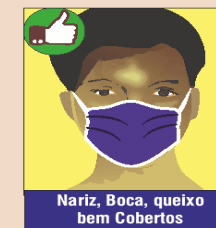
www.telessaude.co.mz | www.riscocovid19.misau.gov.mz

Ligue grátis Tmcel 82149 ou 1490 | Vodacom 84146 | Movitel 1490 ou consulte *660# | ☎ 4 331 8727

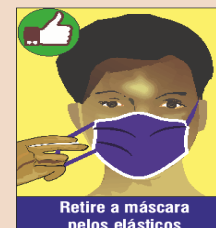
COMO USAR UMA MÁSCARA

- A máscara é de uso individual
- Lave com água e sabão antes usar
- Cada máscara pode ser usada por até 4 horas, depois desse tempo é necessário trocar

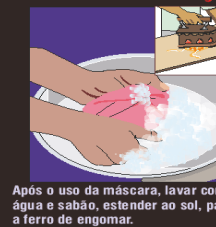
COLOCAÇÃO



USO

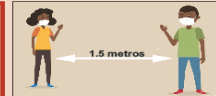


RECOMENDAÇÕES



Use máscara sempre que se fizer à rua, em transportes públicos e locais de aglomeração, (mercados, padarias, bancos, etc)

Lembre-se: Durante a Pandemia da COVID-19, a máscara deve ser usada em combinação com outros métodos de prevenção, incluindo o distanciamento social, lavagem das mãos e etiqueta da tosse.



www.covid19.ins.gov.mz
https://riscocovid19.misau.gov.mz/

Em caso de dúvida ligue para:



*660#

Guidelines for Community Health Workers



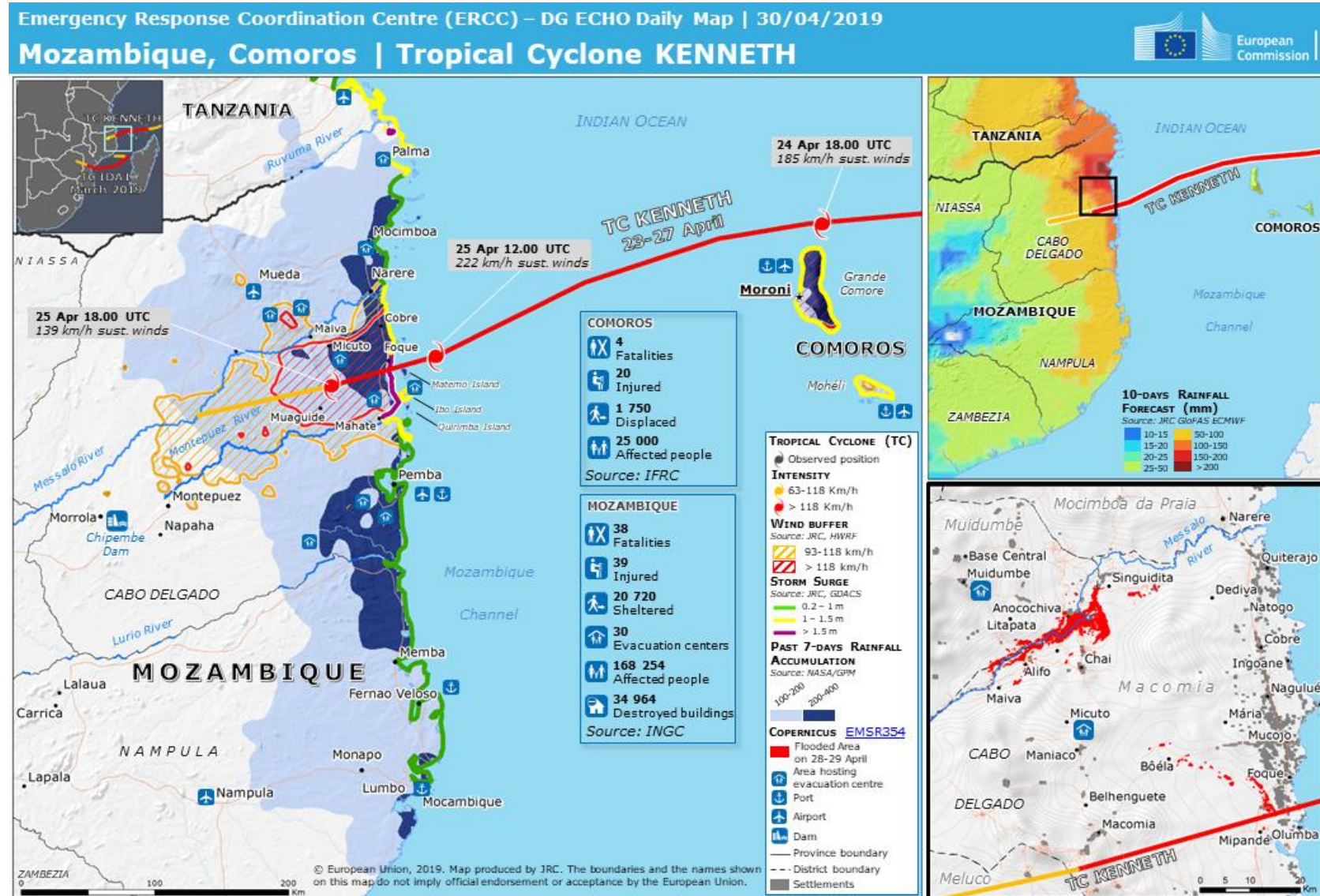
Collaboration with Religious and Traditional Leaders

- Replacement funeral rites to avoid gatherings and contagion
- Symbolic religious ceremonies
- Religious leaders asked to record radio messages and video on preventive measures
- Agreement with Islamic Council to use mosque speakers to spread preventive messages among remote communities
- Traditional healers & birth attendants coopted to avoid the spread of misconceptions among communities (ex. *“Covid19 is whites or rich people disease only”* *“warm weather kills the virus”* *“drinking alcohol protects from virus”* *“affected people have been bewitched”*)

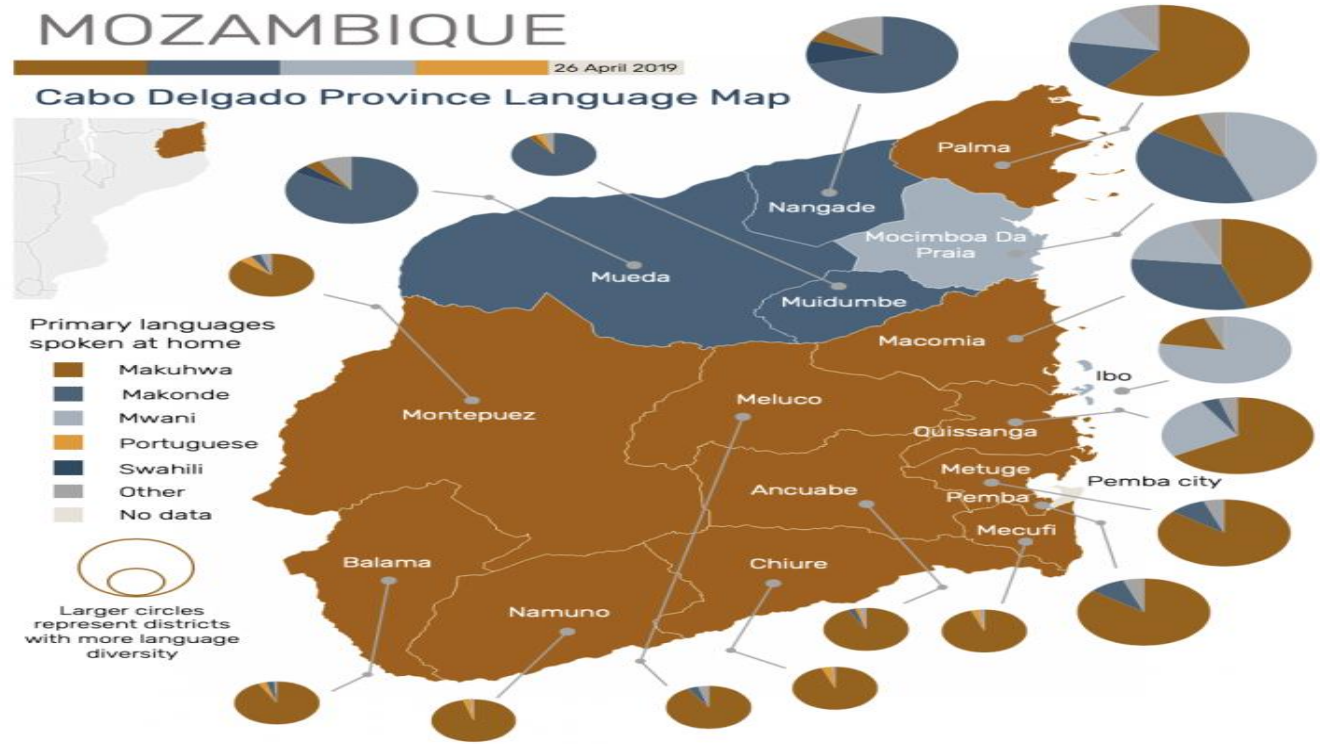
Field Work – Health Outreach Clinics in Remote Communities



Cabo Delgado Province affected areas by Cyclone Kenneth in April 2019



Literacy and languages spoken in CD Province



81% not literate
20% understand Portuguese

51% not literate
42% understand Portuguese

Current Humanitarian Crisis in Cabo Delgado

- Since October 2017 armed attacks in northern districts (Mocimboa da Praia, Macomia, Quissanga..)
- More than 1,500 civilians casualties reported
- At 15th of June, some 150,000 refugees fleeing to neighboring districts
- Cholera Outbreak in Pemba and coastal districts
- Measles Outbreak
- Covid-19 Outbreak (CD most affected province so far)
- Refugees camps in Southern districts (actually, less than 20,000 people found shelter and basic services)
- CUAMM is working in coordination with UN System and others (MSF, ICRC) in 7 districts to support community services, outreach, maternal health, HIV patients adherence to treatment, malaria control

Living Health, Migration and Society on the ground

Group exercise:

Imagine to be here working with us: what would be the main challenges and potentialities of doing research?

Try to focus on ethical and methodological aspects..f.i.

How about being a Medical Doctor here?

How to be a Social Anthropologist?

What about an expert of “rural development” in emergency context?

Please try to list 3 main concerns and 3 possible solutions

**Thank you!
Muito Obrigado!
Khanimambo!
Kinachukuru!
Asante Sana!
Tatenda Kuenekueene!
Grazie Mille!**

**Edoardo Occa, Head of Community Health Programs,
Doctors with Africa CUAMM, Mozambique
Executive PhD Candidate Cultural and Social Anthropology
University of Milano Bicocca, Italy**

<https://doctorswithafrica.org/>

<https://en.unimib.it/>